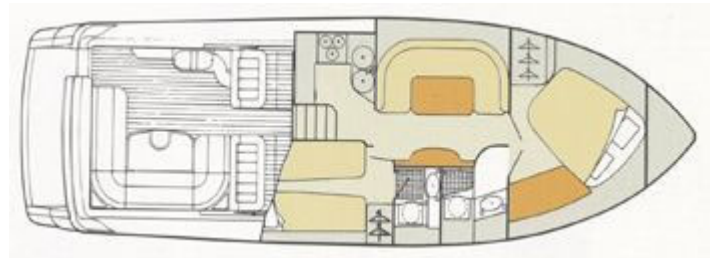


Princess Motor Yacht Sales

International Distributors of Princess Motor Yachts



Princess 406 Riviera



Year Started:
1991

Year Finished:
1994

Length Overall (Inc Pulpit):
41ft 6in / 12.65m

Length Overall (Ex Pulpit):
40ft 8in / 12.40m

Beam:
12ft 9in / 3.90m

Draft:
3ft 4in / 1.93m

Approx. Displacement:
10.8 tonnes

Height Above Waterline to top of GRP radar arch:
9ft 5in / 2.88m

**Height Above Waterline to Top of Fixed Structure
(Excluding radar arch and light mast):**
N/A

Usual Engines Fitted:

Option 1:
Twin Volvo TAMD72 (430hp diesels)

Option 2:
Twin Volvo TAMD71B (380hp diesels)

Option 3:
Twin Volvo TAMD61 (306hp diesels)

"The World's Most Sophisticated Motor Yachts"