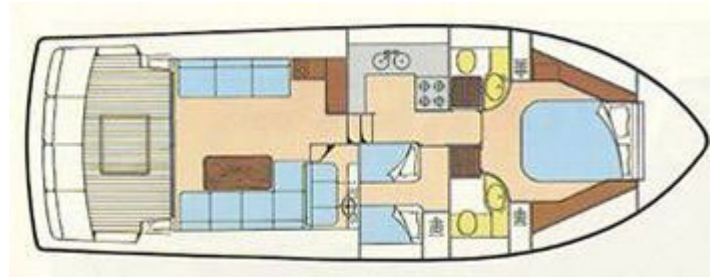


Princess 415



Year Started:
1985

Year Finished:
1992

Length Overall (Inc Pulpit):
43ft 10in / 13.30m

Length Overall (Ex Pulpit):
40ft 10in / 12.40m

Beam:
13ft 11in / 4.24m

Draft:
3ft 9in / 1.14m

Approx. Displacement:
11.5 tonnes

Height Above Waterline to top of GRP radar arch:
13ft 3in / 4.4m

**Height Above Waterline to Top of Fixed Structure
(Excluding radar arch and light mast):**
11ft 3in / 3.44m

Usual Engines Fitted:

Option 1:
Twin Volvo TAMD71B (380hp diesels)

Option 2:
Twin Volvo TAMD61 (306hp diesels)

Option 3:
Caterpillar 3208 (375hp diesels)

"The World's Most Sophisticated Motor Yachts"