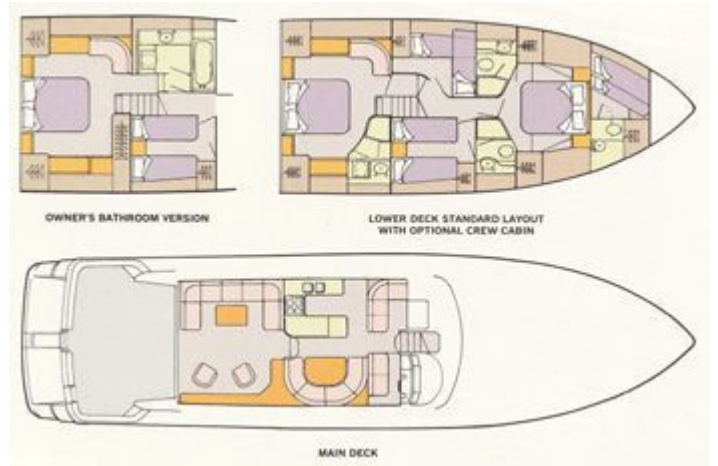


Princess Motor Yacht Sales

International Distributors of Princess Motor Yachts



Princess 65



Year Started:
1990

Year Finished:
1993

Length Overall (Inc Pulpit):
68ft 6in / 20.88m

Length Overall (Ex Pulpit):
66ft 3in / 20.19m

Beam:
17ft 3in / 5.26m

Draft:
5ft 5in / 1.65m

Approx. Displacement:
25 tonnes

Height Above Waterline to top of GRP radar arch:
16ft 5in / 5.0m

**Height Above Waterline to Top of Fixed Structure
(Excluding radar arch and light mast):**
14ft 6in / 4.42m

Usual Engines Fitted:

Option 1:
Twin MAN 1,000hp diesels

Option 2:
Twin MAND2840 (820hp diesels)

Option 3:
Twin Volvo TAMD162 (612hp diesels)

"The World's Most Sophisticated Motor Yachts"