



  
**88**  
PRINCESS



## The All New Long Range Princess 88 Motor Yacht

The new 88 Motor Yacht epitomises everything that is Princess. She is powerful, agile and gracefully elegant and is ideally suited to long range cruising.

This exciting new addition to the flybridge range features an all-new infused long range hull - the latest Princess hybrid hull shape developed through efficiency lessons learned from the Princess 40M. This unique deep-V hull design utilises the very latest resin infusion technology so her performance and handling are both impeccable and efficient.

There is the option for extra long range tanks holding 12,800 litres of fuel giving and anticipated cruising range of 2,000nm at 10 knots.



## Blue Hull Option

The Princess 88 Motor Yacht can be specified with a blue hull as shown. As an alternative option the blue hull can be specified between the rubbing band and knuckle line.



## Grey Hull Option

Alternatively, a grey hull is also available. As with the blue hull the grey hull can also be optionally specified between the rubbing band and knuckle line.





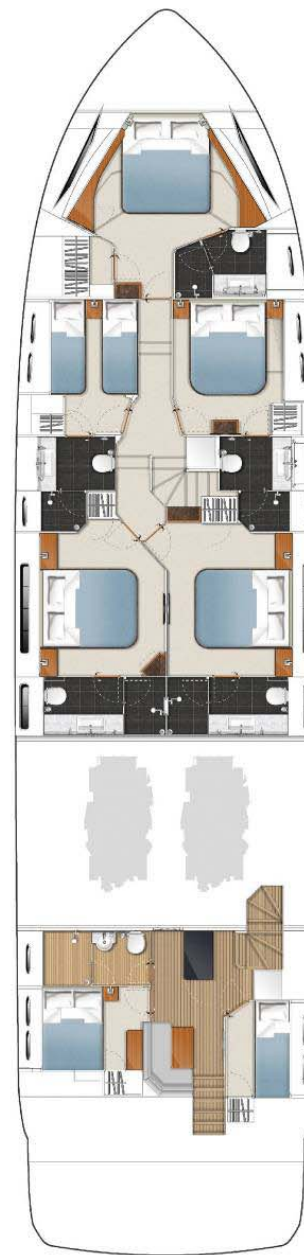
Flybridge



Flybridge (Optional)



Main Deck



Lower Deck



Lower Deck (Optional)

# Flybridge Layout



The standard flybridge layout includes space for freestanding furniture as shown.

# Flybridge (Optional)



The space can also be used to store a tender or jet-ski with an optionally fitted crane which can lift up to 550kg.





## Cockpit and Side Decks

The layout of the exterior spaces offers wonderful flexibility for enjoying life on deck. Wide side decks lead from the large cockpit to the foredeck.





## Foredeck Walk-through Seating Area

The foredeck features a secluded walk-through seating area.



## Foredeck Walk-through Seating Area

An alternative view of the foredeck walk-through seating area.



## Flybridge

The flybridge provides exceptional space for relaxing or entertaining with a large dining table, bar and optional spa bath.



# Main Deck



Two seating arrangements are available within the saloon. The optional seating arrangement is shown above.





## Standard Saloon Configuration

The interior styling and detailing is exceptional with the finest fabrics and finishes adopted throughout. The expansive saloon and formal dining area are exquisitely furnished and bathed in light from large panoramic windows either side.



## Standard Saloon Configuration

Detailed view of the standard saloon seating area.





## Optional Powered Balcony

A powered balcony can be specified which folds neatly from the starboard side deck, connecting the saloon with the anchorage through sliding glass doors.



## Optional Powered Balcony

Open view of the optional powered balcony.





## Alternative Saloon Seating Arrangement with Open Galley

An alternative saloon seating arrangement can be specified if desired. There is also the option to select an open galley.



## Optional Open Galley

Saloon viewed from the open galley.





## Wheelhouse and Breakfast Area

The enclosed wheelhouse and highly equipped galley are separated from the main guest areas with discrete crew access ensuring the utmost privacy, including an independent servery access to the dining area.



## Wheelhouse and Breakfast Area

Alternative view of the wheelhouse.

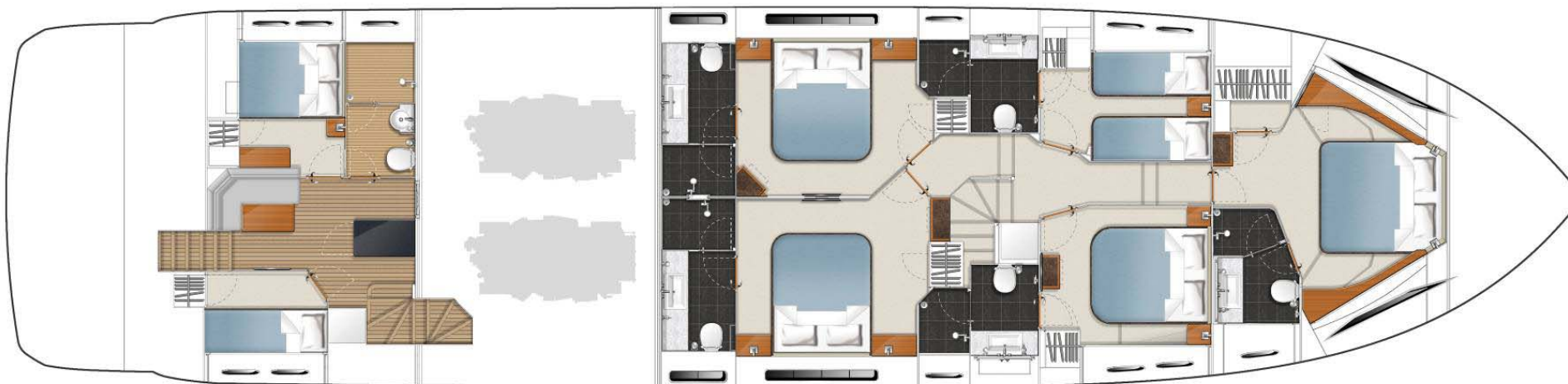


# Lower Deck



As standard the 88 Motor Yacht comes with 4 en-suite cabins, including a full-beam owner's stateroom.

# Lower Deck (Optional)



Optionally, the owner's stateroom can be specified as two double en-suite guest cabins to optimise space if the boat is to be used for charter.



## Full-Beam Owner's Stateroom

A beautifully appointed forward VIP stateroom, starboard double and twin port cabin are accompanied by a palatial full beam stateroom with the four cabin arrangement.





## Full-Beam Owner's Stateroom

Detailed view of the owner's stateroom dressing table.



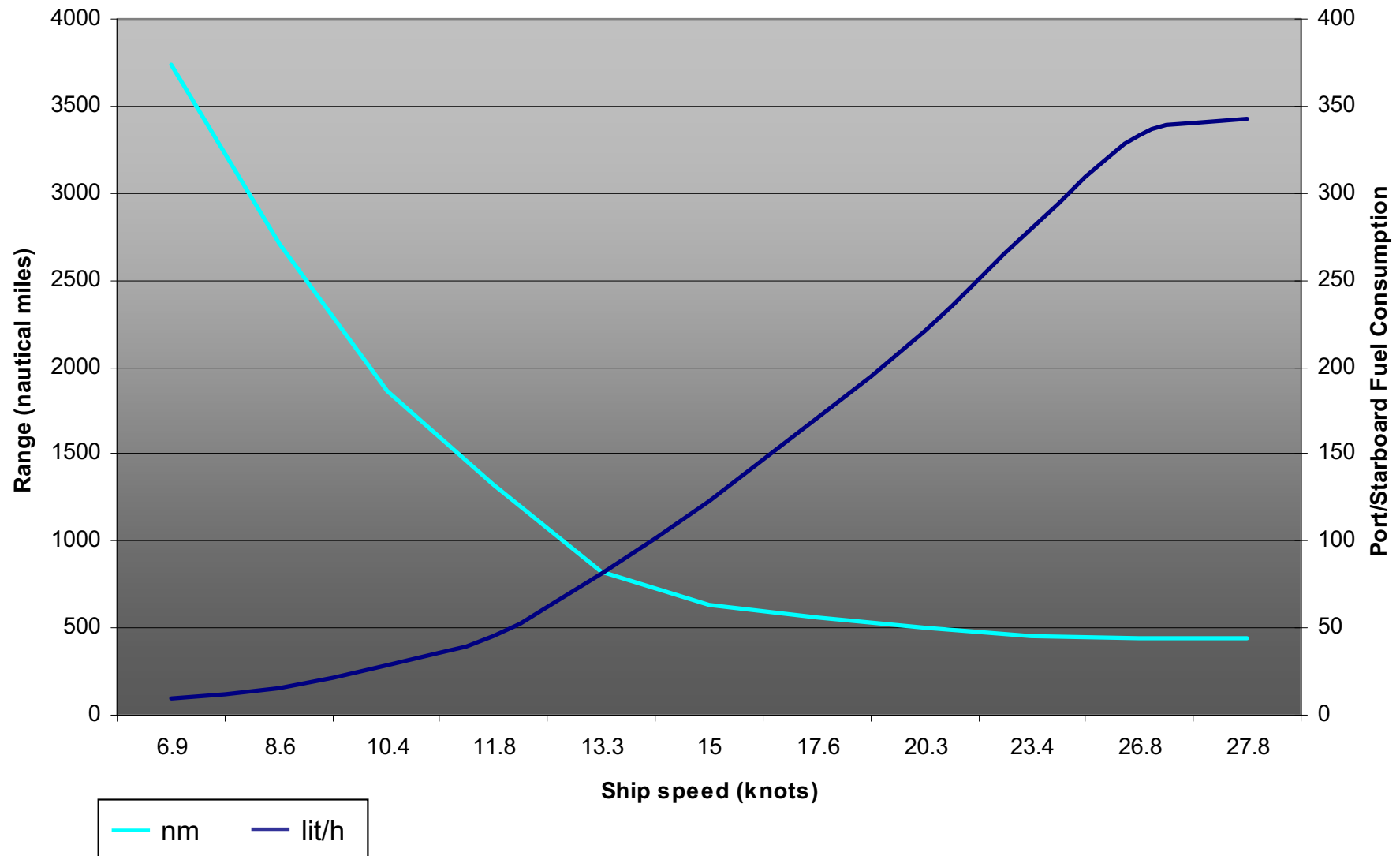


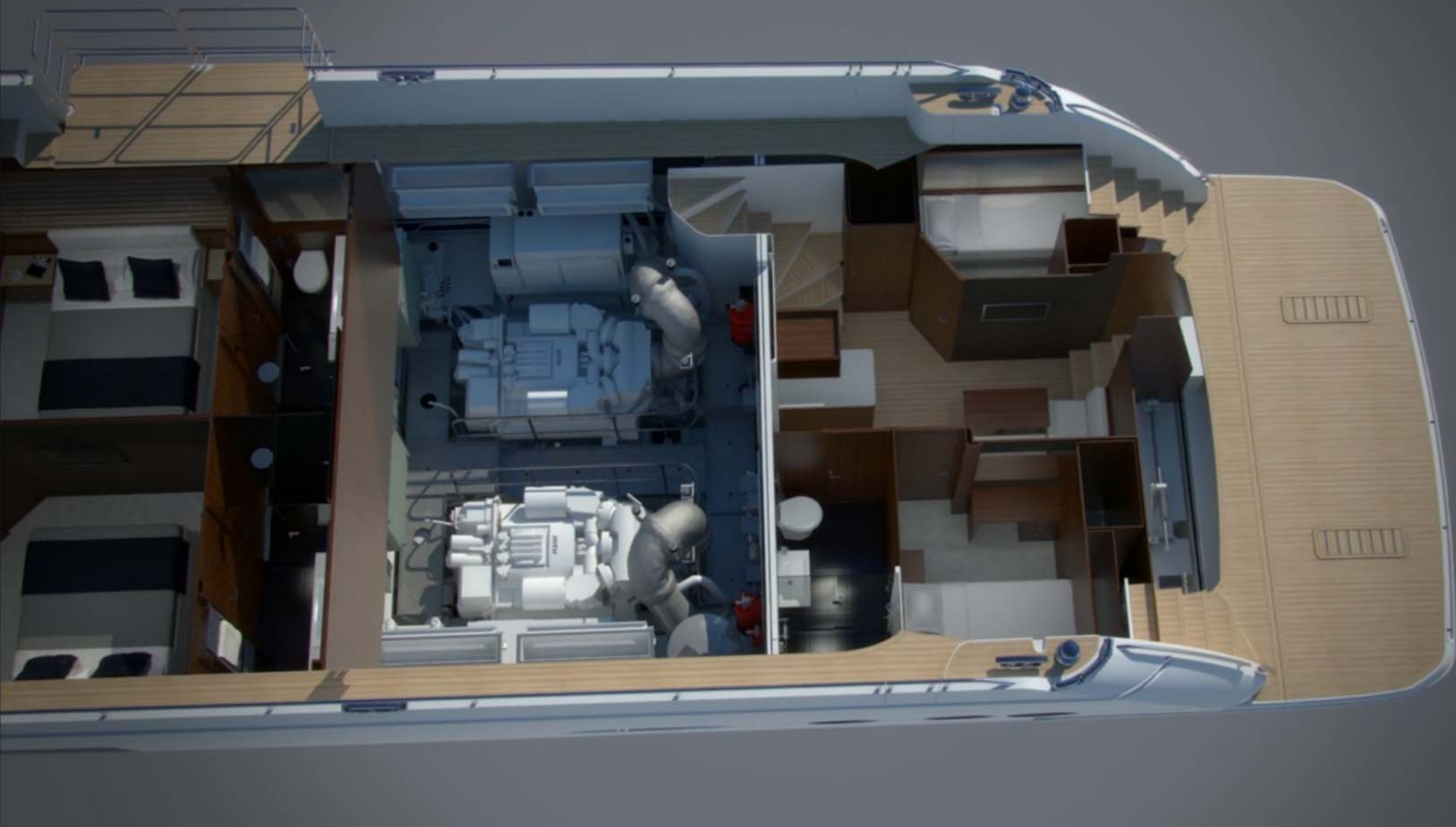
## Full-Beam Owner's Stateroom

Detailed view of the owner's stateroom seating area.

# Performance with Long Range Tanks

The new Princess 88 Motor Yacht is estimated to achieve a range of approaching 2,000nm at 10 knots with the MTU 12V 2000 M93 engines and long range tanks.

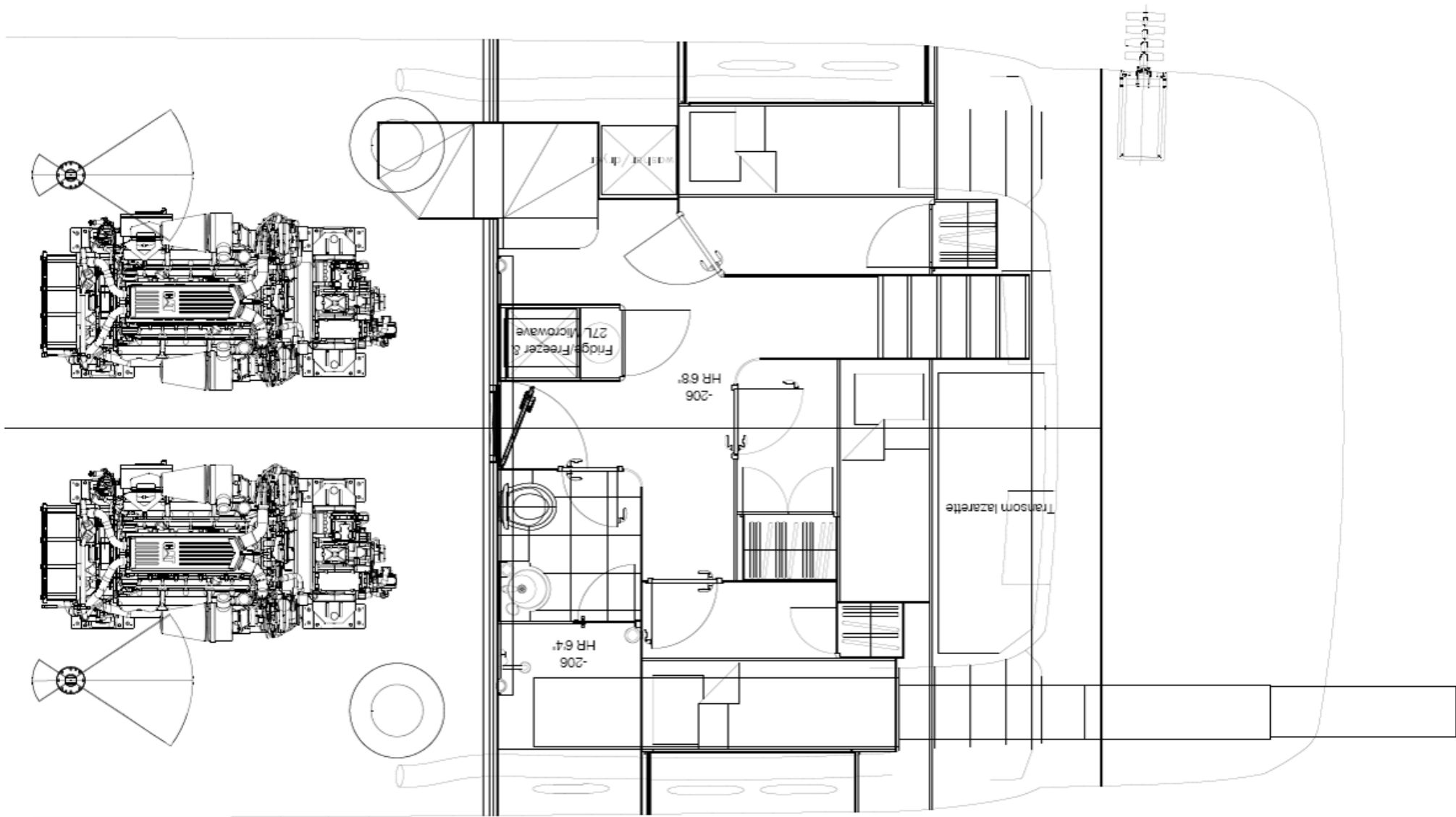




## Standard Crew Cabin Arrangement

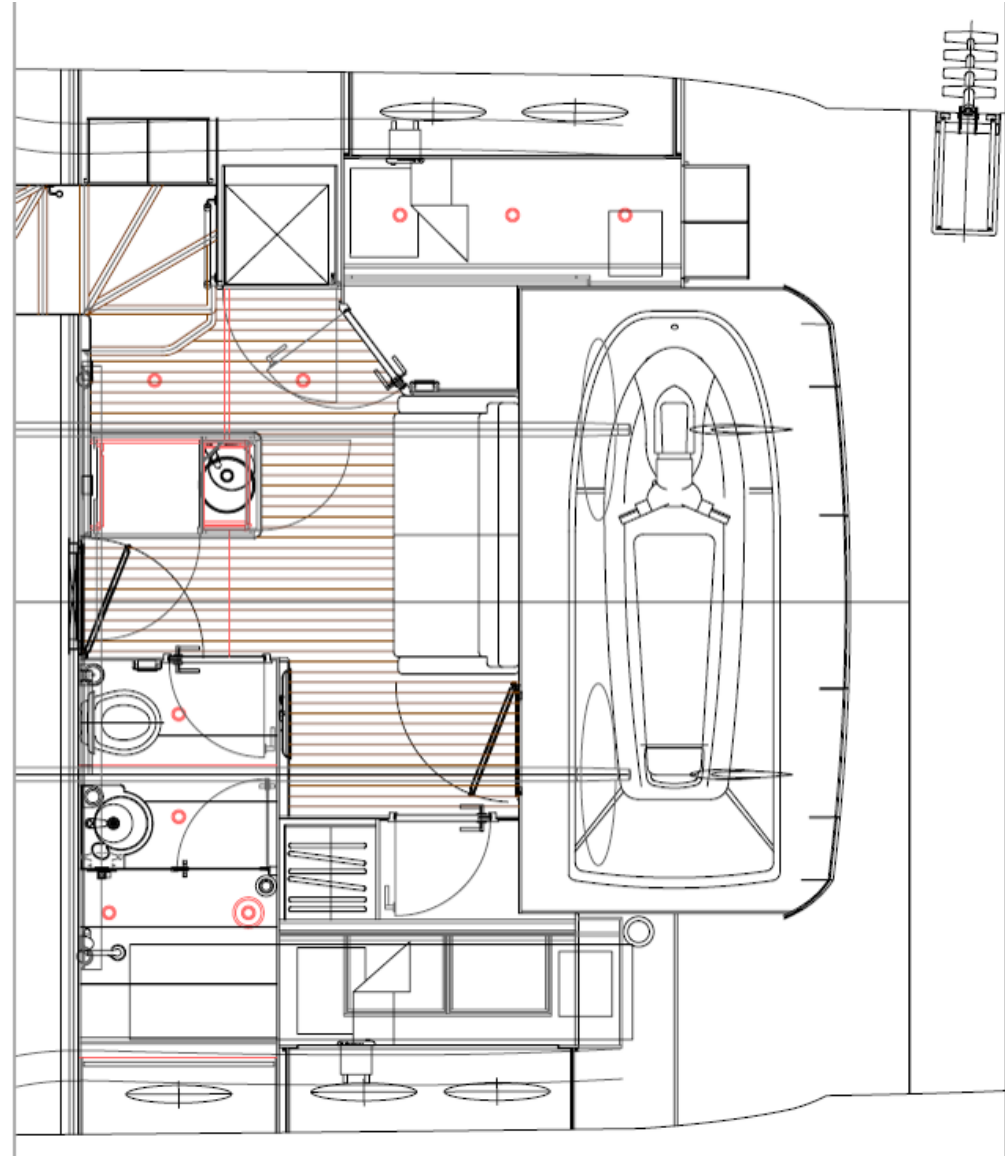
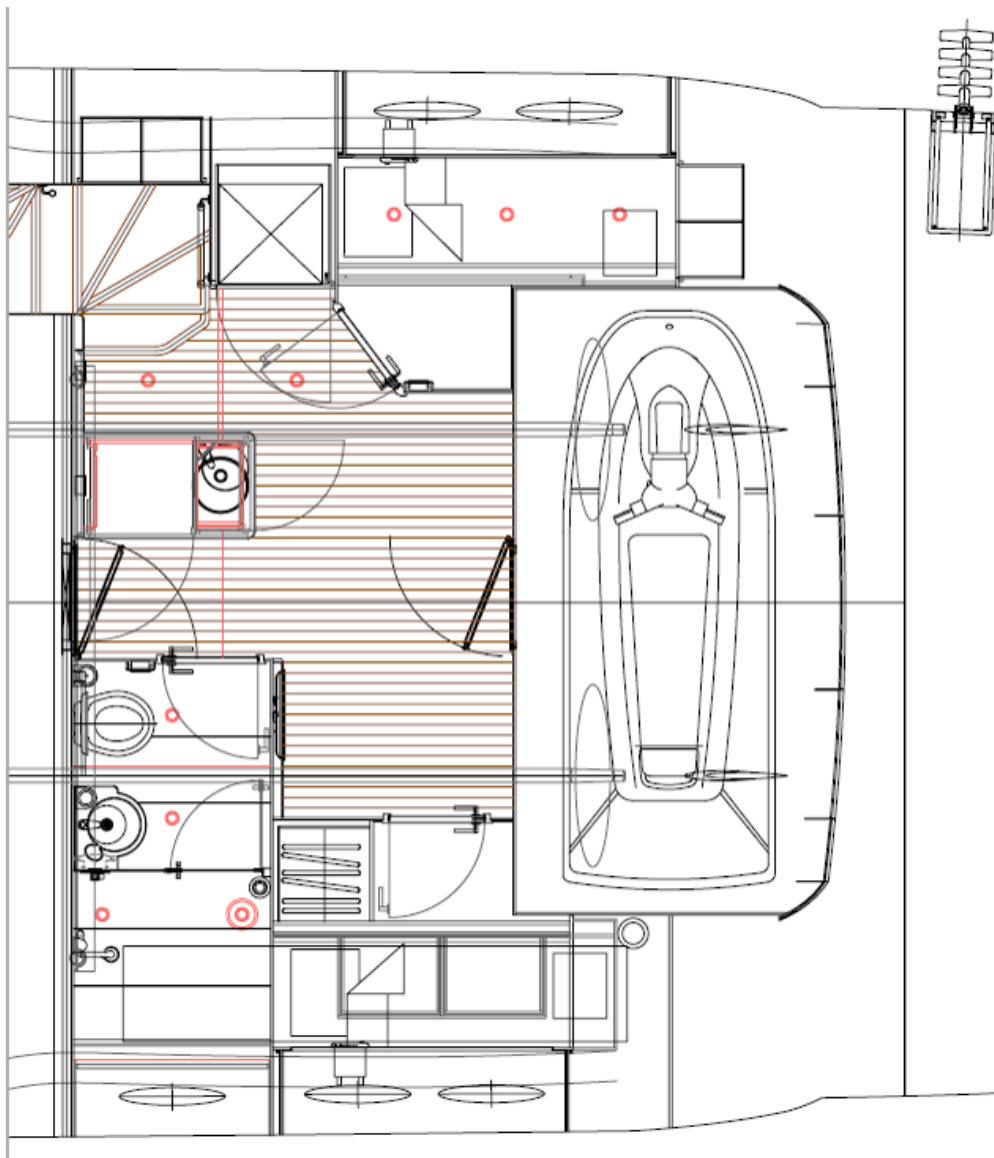
Crew are accommodated aft of the machinery space where there are substantial quarters comprising of a captains double cabin, a twin cabin and a crew mess area.





## Optional Three Crew Cabin Arrangement

Crew can be alternatively arranged to accommodate three crew cabins if required.



## Optional Jet-Ski Garage

As another alternative a jet-ski garage can be fitted aft of the crew, with or without a crew mess area.





# Specification

## PRINCIPAL DIMENSIONS

Length overall (incl. pulpit)	88ft 0in (26.82m)
Length overall (excl. pulpit)	87ft 2in (26.57m)
Beam	20ft 9in (6.3m)
Draft	5ft 7in (1.7m)
Displacement approx. (Twin Cat C32A)	67,000 kg* (147,710lbs)
Fuel capacity	1848 gallons/2219 US gallons/8400 litres
Water capacity (incl. calorifier)	330 gallons/396 US gallons/1500 litres
Hot water calorifier	45 gallons/54 US gallons/205 litres
Holding tank capacity	110 gallons/132 US gallons/500 litres

## STANDARD EQUIPMENT

Power-assisted electro-hydraulic steering system  
Bow thruster (300kgf)  
24v DC/240v AC electrical system  
240v shore power with 2 x 100-amp float battery chargers  
220v/240v diesel generator (2 x 27kW)  
Full air conditioning  
Electric stern rope mooring winches  
Dual station twin hydraulic anchor winches  
Deck/anchor wash  
Dual station interceptor trim tabs with indicators  
Dual station autopilot  
Dual station VHF with DSC R/T with intercom  
Dual station colour radar/chart plotter/GPS  
Dual station speed and distance log  
Dual station echo sounder with alarm  
Dual station remote control searchlight  
Combination microwave/conventional oven/grill  
Full height refrigerator and deep freeze

## ENGINE OPTIONS – DIESEL

Twin MTU 12V 2000 M93 (2 x 1822mhp)	Speed range: 27-28 knots †
Twin Caterpillar C32A (2 x 1825mhp)	Speed range: 27-28 knots †
Twin Caterpillar C32A (2 x 1925mhp)	Speed range: 29-30 knots †

Cocktail cabinet with refrigerator  
Icemaker  
Flybridge wetbar including sink, electric barbecue and refrigerator  
Dishwasher  
Electric quietflush toilets with holding tank  
Saloon HD LED TV with DVD and surround-sound system  
HD LED TV and sound systems in all staterooms  
Flybridge stereo radio/iPod, MP3 player with waterproof speakers  
Teak-laid transom platform/cockpit deck/flybridge stairway/stairs to side decks  
Teak-laid side decks, foredeck walkthrough and flybridge  
Flybridge sunbed and cushions  
Opening doors to both side decks  
Stainless steel framed saloon doors  
Remote control telescopic passerelle  
Twin transom doors  
Electro-hydraulic raise/lower system to transom platform  
Hot and cold transom shower  
Two fully fitted crew cabins with crew mess and laundry  
Cockpit cover

## DECK FITTINGS

- Teak-laid transom platform, cockpit deck, stairway to flybridge, side decks, foredeck walkthrough and flybridge
- Twin stainless-steel anchors (80kg/176lbs and 50kg/110lbs) with 100m of chain (each)
- Deck chain stoppers (2)
- Twin hydraulic anchor winches with rope capstans with foredeck and three station operation
- Electro-hydraulic raise/lower transom platform (600kg)
- Anchor wash/deck wash facility with fore deck and aft deck outlets
- Twin stemhead rollers with automatic anchor launch and self stowing facility
- Two mooring bollards forward with rope fairleads
- Two sets of spring cleats
- Stern line mooring winches port and starboard (24v)
- Two stern mooring cleats and fairleads
- Two bathing platform cleats
- All cleats and bollards in stainless steel
- Coachroof sunbed recess with cushions and storage facility
- Coachroof storage locker for fenders and rope
- Coachroof fore and aft seating/sunbed area with stowable table
- Stainless steel pulpit side stanchions and guardrails
- Grabrails on forward coachroof and canopy
- Navigation lights and riding light
- Dual station remote control searchlight
- Stern docking lights (2)
- Twin 240v shore-power inlets each with 15m (50ft) self stowing cables (Glendinning system)
- Fuel fillers port and starboard
- Water filler
- Twin horns
- Dockside water and telephone connections
- Swimming ladder
- Transom storage locker
- Transom shower
- Optional folding balcony section integrated into starboard bulwark with sliding starboard side doors

## AFT COCKPIT

- Self draining cockpit
- Upholstered seating aft with table and chairs (to seat 8)
- LED overhead and deck level lighting
- Stainless steel handrails
- Remote control 4.4m telescopic passerelle with folding handrail
- Stern docking control position (comprising engine controls, bow thruster controls and anchor control)
- Access to remote fuel valves for engines and generators and manual override for engine room fire system

- Storage lockers
- Twin doors to bathing platform
- Access door to crew cabin and engine room (from side deck)
- Lazarette

## FLYBRIDGE

- Dual station instrument controls including fuel gauges (see Wheelhouse)
- Helm position with hydraulically raised instrument console
- Radar/chartplotter with 15.4" screen
- Power-assisted electro-hydraulic steering with adjustable wheel
- Visual and audible warning system for bilge pumps, engine room fire extinguishers, fuel filters, exhaust temperatures and engine oil pressure and water temperature
- Twin adjustable helm seat
- Port and starboard forward facing L-shaped seating
- Large U-shaped seating/dining area
- Raised sunbed with storage below
- Stereo radio/iPod, MP3 dock
- Stairway to cockpit with hatch
- Console and seat covers
- Wetbar including sink with electric barbecue and refrigerated icebox plus storage
- Life raft storage brackets
- LED deck level lighting
- Area for occasional seating and tender/jet ski storage
- Optional crane (550kg)
- Optional spa bath
- Optional GRP hardtop with electric opening section (or optional folding bimini with electro-hydraulic operation)

## WHEELHOUSE

- Adjustable helm seat
- U shaped seating and table
- Instrument console with engine instruments also incorporating raw water exhaust temperature alarm system, fuel filter alarm system and fuel gauges
- Dual station instruments and controls at Flybridge and Wheelhouse:
  - rudder position indication
  - electronic engine controls
  - power-assisted electro-hydraulic steering with adjustable steering wheel
  - bow thruster control
  - trim tab controls with indicators
  - autopilot
  - VHF with DSC R/T with intercom
  - Colour radar (with scanner) & GPS/Chartplotter (three 15.4" displays at lower helm and single 15.4" display at upper helm)

## **WHEELHOUSE (CONTINUED)**

- all electronic navigation equipment interfaced with radar and autopilot
- speed and distance log
- echo sounder with alarm
- magnetic compass
- horn button
- remote control searchlight
- Chart table with light and chart storage
- Main electrical switch panel (24v and 240v)
- Bilge pump control and alarm system
- Intercom to flybridge and all cabins
- Loudhailer and fog horn
- CCTV linked into chartplotter display at lower helm served by fixed cameras in engine room and at stern
- 240v power outlets
- Triple windscreen wipers with variable speeds and fresh water windscreen wash system
- LED overhead lighting
- Fire extinguisher
- Access door to side deck
- Access to saloon and galley
- 12v outlet
- Red night lighting
- Timber flooring

## **DECK SALOON**

- Seating area to port with two armchairs and large L shaped sofa
- Sofa to starboard
- Coffee table
- Entertainment centre incorporating
- HD LED TV (46") on rise and fall.
- Radio/DVD Blu-ray system and 5.1 AV surround sound system
- Sideboard units containing drinks refrigerator, bottle storage and icemaker
- Panoramic tinted toughened glass windows port and starboard
- Stainless steel framed cockpit triple doors
- LED overhead and concealed lighting with dimmer (24v)
- Blinds and/or curtains to all doors and windows
- Fitted carpet

## **FORWARD DINING AREA**

- Dining table (to seat 8 )
- Dining chairs (8)
- Tinted toughened glass windows (full height on starboard side) and with blinds/curtains
- Optional balcony access
- LED Overhead and concealed lighting (24v with dimmer)

- Storage area for cutlery, crockery and glassware (8 place settings supplied)
- Space for additional storage and optional wine cooler
- Fitted carpet

## **DAY TOILET**

- Electric quietflush toilet
- Wash hand basin with granite/marble work surface
- Storage cupboard
- Tiled floor

## **GALLEY**

- Granite or similar work surfaces and timber floor
- Four ring ceramic hob
- Microwave/conventional oven with grill
- Full size refrigerator and deep freeze
- Twin stainless steel sinks
- Dishwasher
- High and low level storage cupboards and drawers
- Extractor fan
- Venetian blinds/curtains to windows
- Cutlery and crockery storage
- Microwave
- Access door to side deck
- Access to wheelhouse and dining area
- Timber flooring

## **ACCOMMODATION**

- All cabins and bathrooms feature opening portholes and 240v power points
- All en-suites feature electric quietflush toilets with holding tank, 240v shaver points and marble /granite floors (except crew cabin)
- Curtains, blinds or sunscreens to all windows and portholes

## **OWNER'S STATEROOM**

- Large double bed with bedside tables and drawers below
- Wardrobes with hanging and drawer storage
- Starboard seating with table
- Port side dressing table with storage drawers and cupboards
- HD LED TV (40") (with 3D capability)
- Radio/DVD Blu-ray system and 2.1 AV surround sound system
- Refrigerator
- LED overhead and concealed 24v lighting with dimmer
- Bedside wall lights
- Built-in safe
- Telephone/intercom
- Air conditioning/heating outlets



### **OWNERS STATEROOM (CONTINUED)**

- Fitted carpet
- En-suite bathroom:
- Twin wash basins
- Bathroom unit worktops and floor in a choice of marble or granite
- Stall shower (N.B. a bath can be fitted in conjunction with the stall shower if required)
- Freshwater electric toilet
- Bidet
- Extractor fan
- Heated towel rail
- Storage cupboards
- Bathroom accessories

### **FORWARD STATEROOM**

- Large double bed with drawers below
- Walk-in wardrobe with both hanging and storage facilities
- Drawer/cupboard storage
- Dressing table with stool
- HD LED TV (32") (with 3D capability)
- Radio/iPod/MP3 player
- LED overhead and concealed 24v lighting with dimmer
- Bedside wall lights
- Escape hatch
- Air conditioning/heating outlets
- Fitted carpet
- **En-suite bathroom:**
- Freshwater electric toilet
- Washbasin
- Bathroom unit worktops and floor in a choice of marble or granite
- Stall shower
- Extractor fan
- Heated towel rail
- Storage cupboards
- Bathroom accessories

### **STARBOARD STATEROOM**

- Large double bed with drawers below
- Wardrobe
- Drawer/cupboard storage
- Dressing table with stool
- HD LED TV (28")
- Radio/iPod/MP3 player
- LED overhead and concealed 24v lighting with dimmer
- Bedside wall lights

- Air conditioning/heating outlets
- Fitted carpet
- **En-suite bathroom:**
- Freshwater electric toilet
- Washbasin
- Bathroom unit worktop and floor in a choice of marble or granite
- Stall shower
- Extractor fan
- Heated towel rail
- Storage cupboards
- Bathroom accessories

### **PORT GUEST CABIN**

- Twin single beds with drawers below
- Bedside table
- Wardrobe
- Storage drawers and lockers
- LED overhead and concealed 24v lighting with dimmer
- Bedside wall lights
- Air conditioning/heating outlets
- Optional electric powered double berth conversion
- Optional pullman berth
- Fitted carpet
- **En-suite bathroom:**
- Freshwater electric toilet
- Washbasin
- Bathroom unit worktop and floor in a choice of marble or granite
- Stall shower
- Extractor fan
- Heated towel rail
- Storage cupboards
- Bathroom accessories

### **LOBBY / PASSAGEWAY AREA**

- Full height cupboard
- Option of additional washer/dryer (in addition to those in the crew area)
- Access to underfloor storage
- LED overhead and concealed 24v lighting with dimmer
- Fitted carpet

### **FIVE CABIN LAYOUT (OPTIONAL)**

- The aft stateroom is replaced with two staterooms each featuring:
- Large double bed with drawers below
- Wardrobe
- Drawer/cupboard storage

## **FIVE CABIN LAYOUT (OPTIONAL) (CONTINUED)**

- Drawer/cupboard storage
- Dressing table with stool
- HD LED TV (32") (with 3D capability)
- Radio/iPod/MP3 player
- LED overhead and concealed 24v lighting with dimmer
- Bedside wall lights
- Air conditioning/heating outlets
- Fitted carpet
- **En-suite bathroom:**
- Freshwater electric toilet
- Washbasin
- Bathroom unit worktop and floor in a choice of marble or granite
- Stall shower
- Extractor fan
- Heated towel rail
- Storage cupboards
- Bathroom accessories

## **CREW QUARTERS**

- Captain's cabin with double berth, desk, wardrobe, drawers and storage locker
- Crew cabin with two single berths, wardrobe and storage lockers
- Air conditioning/heating outlets in both cabins, bathroom and crew mess area
- LED overhead and individual berth lighting
- Both cabins have opening portlights
- Bathroom with separate stall shower, electric quietflush toilet and washbasin
- **Crew Mess:**
- Seating area with sofa and table
- Microwave oven
- Sink
- Refrigerator
- LED overhead lighting
- Timber laid floor
- Washing machine and separate dryer
- Access from side deck from transom door
- Access to engine room

## **POWER AND DRIVE SYSTEMS**

- Raw water temperature warning lights and buzzers at both helm positions
- 5 bladed propellers in nickel aluminium bronze
- Hydraulic bow thruster
- Engine room lighting
- Engine room access door from side deck
- Electronic engine and gear shift control systems

- Power-assisted electro-hydraulic steering system
- Dual station electro-hydraulic trim tabs with indicators
- Engine driven hydraulic pump for bow thruster and anchor winch
- Dripless shaft seals

## **ELECTRICAL SYSTEMS**

### **24 Volt:**

- 4 x heavy duty batteries for engine starting
- 6 x heavy duty auxiliary batteries
- Battery link facility with remote control at helm position
- Additional battery bank for generators
- Engine alternators charge both banks of batteries via automatic switch charging system
- 2 x 100-amp 24v float battery chargers charge both banks of batteries via automatic switch charging system
- Remote battery isolator control switches at main switch panel position
- Circuit breakers on all circuits
- 24v to 12v converters for certain navigation and radio circuits
- 24v to 240v/50Hz inverter for saloon stereo
- Galvanic isolation system

### **220/240 Volt:**

- European specification: 2 x 27kW @ 50Hz diesel generators in own sound shields, water cooled and with specially silenced exhaust systems and with remote operation from main control panel
- USA specification: 2 x 32kW @ 60Hz diesel generators in own sound shields, water cooled and with specially silenced exhaust systems and with remote operation from main control panel
- 2 x 63-amp shore support inlets with Glendinning cable system (15m/50ft each)
- Shore power/generator change over control operated from main control panel
- Polarity check system
- Earth leakage safety trip, circuit breakers on all circuits
- Power points (240v) in all cabins and living areas, helm position and galley
- 240v shaver points in washrooms
- 3kW immersion heater for fresh water

## **FUEL SYSTEM**

- Main fuel tank with fuel polishing transfer system to day tank giving a total of 1848 gallons/2219 US gallons (8400 litres) of fuel capacity
- Fuel fillers to port and starboard
- High capacity duplex fuel filters/water traps with integral changeover valves and water sensors connected to alarms at both helm positions
- Remote fuel isolation controls in cockpit locker for main engines and generators
- Fuel gauges at lower and upper helm positions

## **WATER SYSTEM**

- Water tanks in heavy duty polypropylene giving 285 gallons/342 US gallons (1295 litres) capacity plus 45 gallons/54 US gallons (205 litres) hot water calorifier
- Water level gauge
- Deck filler
- Automatic freshwater pump with filter
- Pump circuit breaker at main switch panel
- Electric quietflush toilet system linked to 110 gallons/132 US gallons (500 litres) holding tank with electric, overboard and dock side discharge with manual backup overboard discharge
- Level contents gauge on main switch panel
- **BILGE PUMPS**
- Automatic electric bilge pumps (with manual override) in machinery spaces, forward accommodation and crew accommodation
- Individual bilge indicator warning lights at helm with time delay operated audible alarm (and flybridge repeater warning lights and alarm)
- High capacity manual bilge system with suction points in the same areas
- **AIR CONDITIONING**
- Chilled water reverse cycle air conditioning/heating units (total capacity 144,000 BTU)
- Individual controls in all cabins and upper deck space areas (including crew areas)
- Additional outlets in all bathrooms/WC compartments
- Integrated windscreen demist system

## **EXTINGUISHERS/FIRE CONTROL SYSTEMS**

- Automatic engine room fire extinguisher system (with manual override) and warning system at both helm positions providing automatic shutdown of engines, generators and ventilation fans
- Automatically operated engine room air shutoff system
- Hand operated fire extinguishers in:
  - all staterooms
  - galley
  - lower helm position
  - crew quarters

## **OTHER ITEMS SUPPLIED AS STANDARD**

- Ensign staff
- Forward ensign staff with pennant
- Fenders (8)
- Mooring warps (4)
- First aid kit
- Complete set crystal glass, crockery and cutlery
- Quilted bedspreads in all cabins (except crew quarters)
- Set of towels (8 large, 8 hand)
- Tool kit
- Boat hook

- Engine and equipment manuals
- Ship's document case

## **FINISHES**

- Teak-laid decks to all external deck areas (including flybridge)
- Timber-laid galley, wheelhouse and upper lobby
- Furniture in choice of oak, cherry or walnut wood with satin or gloss lacquer finishes
- Marble or granite floors in all bathroom suites in guest accommodation (including day head)
- Shower cubicle bulkheads in mosaic tiles
- Marble or granite wash hand basin counter tops in all bathroom suites in guest accommodation (including day head)
- Galley worktop in Marble or Granite
- Choice of high quality carpet and upholstery fabric from extensive range
- Curtains, blinds or sunscreens to all windows and portholes
- Crew cabins are carpeted, crew bathroom floors are black tiled with white Avonite counter tops





  
**88**  
PRINCESS