


Princess S65

£2,995,000 EX VAT

Year 2025 

Lying Lower Swanwick, GB 

Ref PNS65532 



AVAILABLE NOW - NEW PRINCESS S65 SPORTBRIDGE YACHT

• **SPECIAL PRICE**

OPEN TO PART EXCHANGE

PROFESSIONAL PHOTOGRAPHY AND VIDEO WALK-THROUGH AVAILABLE


PRINCESS
OFFICIAL DISTRIBUTOR
UK / SPAIN / GERMANY

PRINCESS MOTOR YACHT SALES

T: +44 (0)1489 557755

E: ukdirect@princess.co.uk

www.princess.co.uk

Princess S65

£2,995,000 EX VAT

Year **2025** 

Lying **Lower Swanwick, GB** 

Ref **PNS65532** 

2025 Built • MAN V12 1400 • White hull • 4 Cabins accommodating 8 guests, plus 2 crew • Electro-hydraulic telescopic passerelle with automatic handrails • Teak decking to foredeck, side decks and Sportbridge • Electrically operated sun awning • Upgraded electro-hydraulic Bimini top with dimmable LED lighting • Reverse cycle air-conditioning • Onan 19kW generator • Raymarine Cyclone radar with 48" open array scanner • Dual Raymarine Axiom XL 16" multifunction displays at both helms • Thermal and rear-facing marine cameras • Premium interior fit-out including aft cabin with en-suite and powered double berth conversion • Sportbridge sunbed conversion • Wetbar with refrigerator and icemaker • On-board Wi-Fi network with 4G/5G antenna • Forward and starboard cabin TV/audio packages • Cockpit audio system with waterproof speakers • Foredeck cool box and teak coffee table • Reticulated foam exterior seating upgrade

PLEASE CONTACT US FOR MORE INFORMATION ON THIS PRINCESS S65 YACHT FOR SALE

INFORMATION & FEATURES

MAN V12-1400hp

Engine Type: **Inboard** Power: **1400 hp**

MAN V12-1400 (Engine 2)

Engine Type: **Inboard** Power: **1400 hp**

Dimensions

LOA: **67ft 7in**

Beam: **16ft 9in**

Tanks

Fresh Water: **803 l**

Accommodations

Cabins: **4** Heads: **3**

Other

Hull Colour: **White hull**

Hull Material: **Fiberglass**



PRINCESS MOTOR YACHT SALES

T: +44 (0)1489 557755

E: ukdirect@princess.co.uk


www.princess.co.uk

Princess S65

£2,995,000 EX VAT

Year **2025** 

Lying **Lower Swanwick, GB** 

Ref **PNS65532** 

Navigation Equipment

- Raymarine chart plotters - European version plotter
- International VHF
- Raymarine Cyclone colour radar, 55W pedestal with 48" open array scanner
- Second Raymarine Axiom 2 XL 16 (15.6") colour multifunction display at lower and upper helm
- Raymarine Remote control keypad (RMK-10) for multifunction display fitted at lower and upper helm
- Raymarine i70s 4" multifunction display at lower and upper helm (for separate display and control of individual functions e.g. log and echo sounder)

Deck Equipment

- Teak (6mm) with black caulking to foredeck and side decks
- Teak (6mm) to Sportbridge deck
- Electro-hydraulic telescopic passerelle with automatic handrails and remote wiring
- Electric stern rope handling winches (2)
- Electrically operated sun awning to aft end of cockpit
- Bimini Top
- Electro-hydraulically powered Bimini, including dimmable LED overhead lighting
- Grey exterior covers
- Stainless steel epsilon anchor
- Additional 20m of galvanised 10mm anchor chain to give a total of 80m
- Foredeck teak coffee table with deck mounted fixing point
- Top loading foredeck cool box, positioned between foredeck sun pads, in place of central foredeck storage locker
- Reticulated foam fitted to all standard exterior cockpit, Sportbridge seating/sunpads and foredeck seating in place of standard
- Up/down table and infill cushion on Sportbridge dinette to create a large sunbed
- Icemaker fitted in deck saloon
- Refrigerator fitted in sportbridge wetbar (95 ltr)

Princess S65

£2,995,000 EX VAT

Year **2025** 

Lying **Lower Swanwick, GB** 

Ref **PNS65532** 

Ship Systems

- Onan 19kW generator in place of standard
- Princess connect telemetry and maintenance system
- Multi sockets, in place of standard sockets
- AGM 90Ah batteries in place of standard
- Stern docking lights fitted to canopy overhang
- Raymarine Thermal camera in engine room to be displayed on helm MFD screens
- Raymarine Rear facing day and night network dome marine camera to be displayed on helm MFD screens
- Reverse cycle, split air system air-conditioning/heating
- Aft cabin air-conditioning condensing unit
- Electric discharge system for holding tanks with electric valve and timer
- Grey water holding tank (300 litres), in addition to standard black water holding tank

Interior Fitout

- Aft cabin fit out with single berth, locker with shelves and en-suite bathroom
- Starboard cabin with double berth conversion and powered sliding mechanism on inboard berth
- Fit-out of cockpit port servery unit with cool box, cupboard, bin and sink/tap.
- L-shaped aft facing cockpit seating to starboard side

Interior Equipment

- Stools for use at dinette or forward saloon area (2)
- Mosquito screens for all opening portlights

Audio Visual Equipment

- Forward cabin TV and Audio Package - 43" LED TV with Fusion MS-RA670 and Focal speakers
- Starboard cabin TV/Audio Package - 24" LED TV with Fusion MS-RA670 and Focal speakers

Princess S65

£2,995,000 EX VAT

Year **2025** 

Lying **Lower Swanwick, GB** 

Ref **PNS65532** 

- Cockpit audio package – Fusion ERX400 remote control with waterproof Fusion speakers (2) linked to saloon audio system
- On-board WiFi network with external WiFi and 4G/5G antenna for extended range

Disclaimer

The Vendor is selling in the course of a business. Whilst every care has been taken in their preparation, the correctness of these particulars is not guaranteed. The particulars are intended only as a guide and they do not constitute a term of any contract.

A prospective buyer is strongly advised to check the particulars and where appropriate at his own expense to employ a qualified Marine Surveyor to carry out a survey and/or to have an engine trial conducted which if conducted by us shall not imply any liability for such engine on our part.



Princess S65

£2,995,000 EX VAT

Year 2025 

Lying Lower Swanwick, GB 

Ref PNS65532 




PRINCESS
OFFICIAL DISTRIBUTOR
UK / SPAIN / GERMANY

PRINCESS MOTOR YACHT SALES

T: +44 (0)1489 557755

E: ukdirect@princess.co.uk

www.princess.co.uk

Princess S65

£2,995,000 EX VAT

Year 2025 

Lying Lower Swanwick, GB 

Ref PNS65532 



Princess S65

£2,995,000 EX VAT

Year 2025 

Lying Lower Swanwick, GB 

Ref PNS65532 



Princess S65

£2,995,000 EX VAT

Year 2025 

Lying Lower Swanwick, GB 

Ref PNS65532 



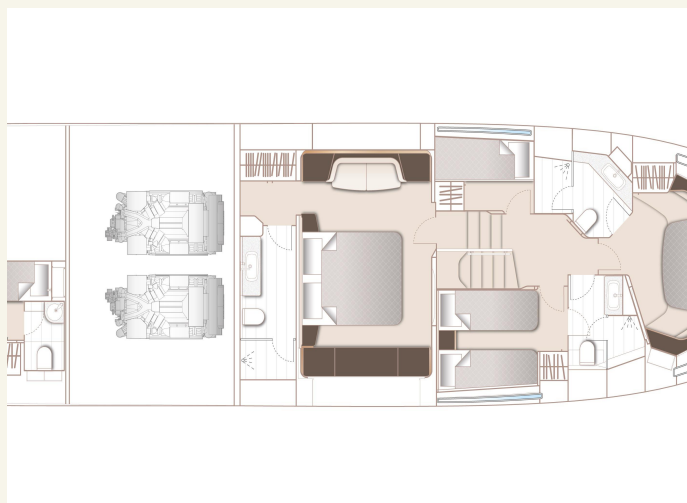
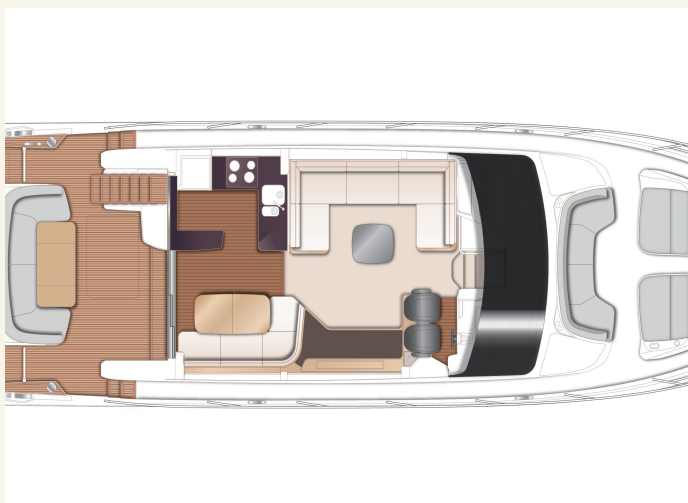
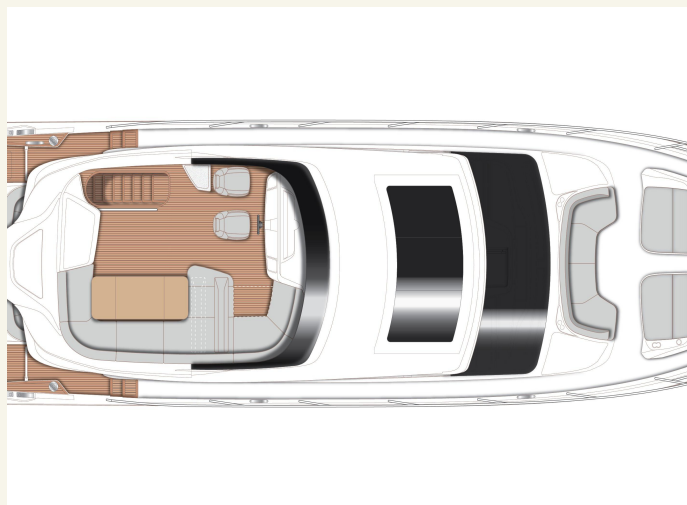
Princess S65

£2,995,000 EX VAT

Year 2025 

Lying Lower Swanwick, GB 

Ref PNS65532 



FINANCE AND INSURANCE
AVAILABLE ON THIS
PRINCESS YACHT

Contact
finance@princess.co.uk
insurance@princess.co.uk
for information.


PRINCESS
OFFICIAL DISTRIBUTOR
UK / SPAIN / GERMANY

PRINCESS MOTOR YACHT SALES




PRINCESS
OFFICIAL DISTRIBUTOR
UK / SPAIN / GERMANY

PRINCESS MOTOR YACHT SALES

T: +44 (0)1489 557755

E: ukdirect@princess.co.uk

www.princess.co.uk