

Princess V48

£485,000 INC VAT

Year **2014** 

Lying **Weymouth, GB** 

Ref **PB2452** 



OPEN TO PART EXCHANGE • PRINCESS TECHNICAL ORIENTATION INCLUDED

2015 Model, Built 2014

- UK Tax Paid
- Twin Volvo IPS 600 Diesel engines

Princess V48

£485,000 INC VAT

Year **2014** 

Lying **Weymouth, GB** 

Ref **PB2452** 

- Only 388 hours • Volvo joystick manoeuvring control

- Blue hull

up to toe rail • 2 cabins accommodating 4 guests

- Lower dinette layout • Hydraulic bathing platform

- Teak laid bathing platform, cockpit and side decks

- Underwater lights

- Raymarine navigation equipment

including 15-inch HybridTouch chart plotter

- Trim tabs

- Side-power bow thruster with remote

- Stern facing camera

- Rovere Oak Gloss woodwork • Forward guest cabin with scissor berths

- Fusion stereo systems with bluetooth

- LED TV's • Drawer type dishwasher

PLEASE CONTACT US FOR MORE INFORMATION ON THIS PRINCESS V48 MOTOR YACHT FOR SALE

INFORMATION & FEATURES

Volvo IPS 600


Engine Type:	Inboard	Power:	600 hp
Fuel Type:	Diesel	Engine Hours:	388

Princess V48

£485,000 INC VAT

Year **2014** 

Lying **Weymouth, GB** 

Ref **PB2452** 

Drive Type: **Pod**

Volvo IPS 600 (Engine 2)

Engine Type: **Inboard** Power: **600 hp**

Fuel Type: **Diesel** Engine Hours: **388**

Drive Type: **Pod**

Dimensions

LOA: **50ft 1in**

Beam: **13ft 6in**

Accommodations

Cabins: **2** Heads: **2**

Other

Hull Colour: **Blue hull up to toe-rail Red boot-top line**

Hull Material: **Fiberglass**

Navigation Equipment

- Raymarine HybridTouch 15.4" multifunction display
- Raymarine autopilot, fish finder and AIS

Deck Equipment

- Teak laid bathing platform, cockpit and side decks
- Hi-Lo bathing platform (fits Williams 285/280 Mini Jet)
- Electric anchor winch (helm and foredeck control)
- 20kg Delta anchor with additional 10m of 10mm anchor chain (total 50m)
- Stainless-steel cleats, pulpit, coachroof handrails and grabrails

Princess V48

£485,000 INC VAT

Year **2014** 

Lying **Weymouth, GB** 

Ref **PB2452** 

- Foredeck hatch with integrated skylight
- Navigation lights, twin electric horns and remote searchlight
- Windscreen cover
- Sunroof blinds
- PVC rubbing band with stainless-steel insert
- Underwater lights
- Remote control anchor winch
- Windscreen freshwater wash
- Riding light, remote searchlight and anchor winch

Ship Systems

- Volvo joystick maneuvering control
- Single-lever engine controls
- Side-power bow thruster with remote
- Stern-facing camera
- Trim tabs with indicators
- Rudder position indicator
- Engine room bar heater
- Twin fuel tanks
- High-capacity fuel filter/water trap
- Remote fuel cocks in cockpit locker
- 24V DC / 240V AC electrical systems
- 4 engine batteries and 4 auxiliary batteries
- Alternator split-charge system
- 40-amp float battery charger
- 220/240V shore inlet (32A)
- Safety trip switches and earth leakage protection
- Remote battery master switches
- Battery paralleling system
- Circuit breakers on all circuits
- Shaver points in bathrooms
- Polarity check system
- Automatic fire extinguishers in engine and generator space

Princess V48

£485,000 INC VAT

Year **2014** 

Lying **Weymouth, GB** 

Ref **PB2452** 

- 3 automatic bilge pumps with manual override
- High-capacity manual bilge pump with suction points
- Fuel and water fillers

Interior Fitout

- Rovere oak gloss interior
- Timber-laid walnut floors
- Upper saloon with u-shaped sofa, dining table, cocktail cabinet, fridge
- Lower saloon with l-shaped sofa, convertible to double berth, table, storage
- Owner's stateroom with large double bed with under-bed drawers, wardrobe, dressing table and sofa
- Owners stateroom includes en-suite bathrooms with stall shower, Avonite worktop, storage and opening port
- Forward guest cabin with scissor berths and under-bed storage, wardrobe, deck hatch with blinds and fly screen
- Forward guest cabin with en-suite bathroom with stall shower and opening port
- Dimmer switches in saloon and lower dinette

Interior Equipment

- Avonite worktop with 3-ring electric hob
- Combination microwave/conventional oven/grill
- Full-size refrigerator with deep freezer
- Stainless steel sink with Monobloc mixer tap
- Drawer-type dishwasher (6 place settings)
- Cupboards, drawers and under-floor bin
- Mosquito screens on opening portholes

Audio Visual Equipment


- Owners stateroom 28" LED TV with Fusion MS-AV700i
- Forward guest cabin 22" LED TV with Fusion stereo
- 40" LED TV with Fusion stereo in saloon
- Fusion stereo systems with Bluetooth

Princess V48

£485,000 INC VAT

Year **2014** 


Lying **Weymouth, GB** 

Ref **PB2452** 

- MP3 sound system with saloon and cockpit speakers

Disclaimer

The Company offers the details of this vessel in good faith but cannot guarantee or warrant the accuracy of this information nor warrant the condition of the vessel. A buyer should instruct his agents, or his surveyors, to investigate such details as the buyer desires validated. This vessel is offered subject to prior sale, price change, or withdrawal without notice.



PRINCESS
BROKERAGE INTERNATIONAL
EST 1964
OUR KNOWLEDGE IS YOUR LUXURY

> **OPEN TO PART EXCHANGE**
WE CAN HELP SPEED UP THE SALE THROUGH OUR OFFER TO UNDERWRITE A PART-EXCHANGE AGAINST THE BROKERAGE YACHT

> **PRINCESS TECHNICAL ORIENTATION INCLUDED**
AT NO ADDITIONAL COST, REGARDLESS OF WHERE THIS YACHT IS LOCATED, WE OFFER A COMPREHENSIVE TECHNICAL INTRODUCTION TO YOUR PURCHASE

> **PROFESSIONAL PHOTOGRAPHY, VIDEO & 3D TOUR AVAILABLE**
VIEW IMAGERY, VIDEO AND A 3D TOUR/WALKTHROUGH OF THIS YACHT ONLINE

PRINCESS
BROKERAGE INTERNATIONAL

brokerage@princess.co.uk
+44 (0)1489 557755
www.princessmotoryachtsales.com




Princess V48

£485,000 INC VAT

Year 2014 

Lying Weymouth, GB 

Ref PB2452 




Princess V48

£485,000 INC VAT

Year 2014 

Lying Weymouth, GB 

Ref PB2452 



Princess V48

£485,000 INC VAT

Year 2014 

Lying Weymouth, GB 

Ref PB2452 



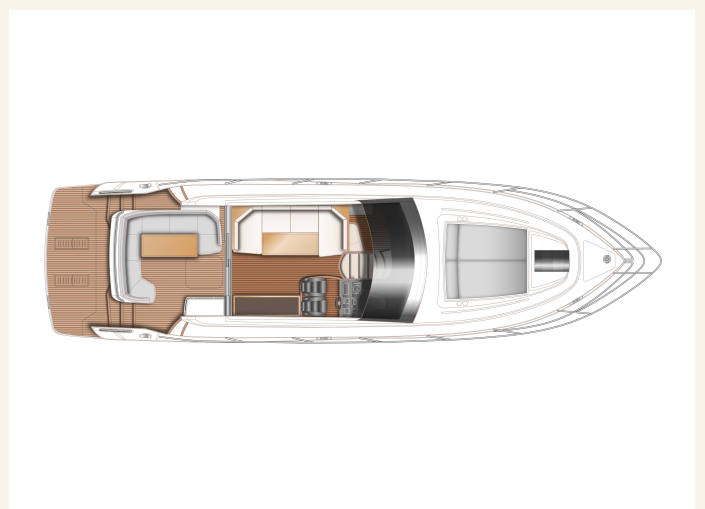
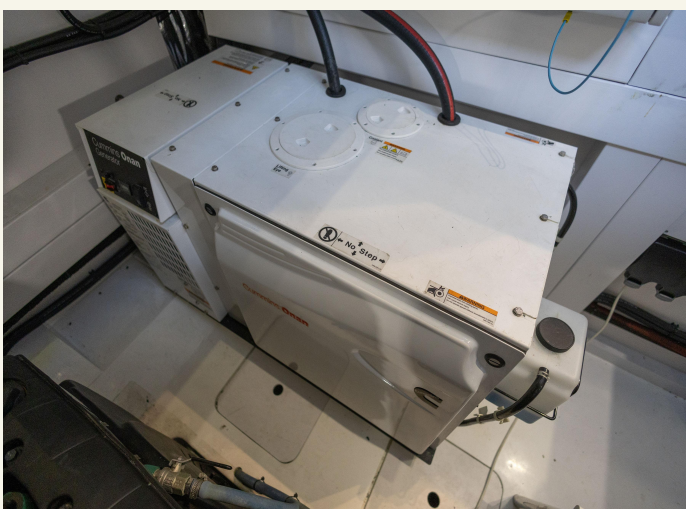
Princess V48

£485,000 INC VAT

Year 2014 

Lying Weymouth, GB 

Ref PB2452 



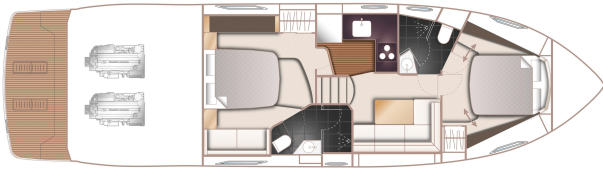
Princess V48

£485,000 INC VAT

Year **2014** 

Lying **Weymouth, GB** 

Ref **PB2452** 



FINANCE AND INSURANCE AVAILABLE ON THIS PRINCESS YACHT

Contact
finance@princess.co.uk
insurance@princess.co.uk
for information.


PRINCESS
OFFICIAL DISTRIBUTOR
UK / SPAIN / GERMANY

PRINCESS MOTOR YACHT SALES

