


Princess V55

Price on Application

Year **2026** 

Lying **Southampton, GB** 

Ref **PNV55132** 



NEW 2025 PRINCESS V55 FOR SALE • OPEN TO PART EXCHANGE

PROFESSIONAL PHOTOGRAPHY, VIRTUAL TOUR AND VIDEO COMING SOON

Twin Volvo D13-1000 (2 x 1000 mhp) diesel engines • White hull with dark grey waterline and black antifouling • 3 Cabins accommodating up to 6 guests plus 1 berth crew cabin • Volvo joystick control with docking and driving modes • Seakeeper 9 Gyro Stabilisation system • Bow and stern thrusters (variable speed, upgraded) • Walnut interior wood, satin finish • Teak laid side decks, foredeck, coach roof and transom platform • Electrically operated telescopic passerelle with automatic handrails • Electrically operated sun awning to aft cockpit • Foredeck sunbed cushions with adjustable headrests • Premium Allure Collection styling package • Reverse cycle air-conditioning/heating including crew cabin • Onan 17.5kW generator • Garmin navigation suite including radar, dual multifunction displays and remote keypad • LED TVs in all cabins and saloon (up to 50" with powered lift and swivel) • Exterior JL Audio speakers with



PRINCESS MOTOR YACHT SALES

T: +44 (0)1489 557755

E: ukdirect@princess.co.uk

www.princess.co.uk

Princess V55

Price on Application

Year **2026** 

Lying **Southampton, GB** 

Ref **PNV55132** 

subwoofer and amplifier • On-board WiFi and 4G/5G internet capability with extended range antenna • Underwater transom lights (blue/white) • LED overhead and low-level lighting throughout • Stainless steel Epsilon anchor with extended chain

PLEASE CONTACT US FOR MORE INFORMATION ABOUT THIS 2025 PRINCESS V55 FOR SALE

Specification

- **Length** 17.81m / 58ft 5in
- **Beam** 4.65m / 15ft 3in
- **Hull colour** White hull with dark grey waterline and black antifouling Hull and bathing platform fendering in white with stainless steel insert
- **Hull material** Fiberglass
- **Number of engines** 2
- **Fuel type** diesel
- **Total power** 2000.0 hp

Navigation Equipment

- Garmin 434 XHD3 radar with 48" open array
- Second Volvo/Garmin 16" colour multifunction display at helm
- Garmin remote control keypad (GRID) at helm
- Garmin GMI20 4" multifunction display (log and echo sounder)
- Chartplotter Version: European
- VHF Registration: International

Deck Equipment

- Teak laid side decks, foredeck and coachroof walkthrough
- Teak step nosings upgrade (include transom and steps to side deck when side deck option is selected)
- Electro-hydraulic telescopic passerelle (3.5m) with automatic hand rails
- Canopy styling blade finished in unique contrast colour: Platinum
- Electric drop window to portside saloon
- Electrically operated sun awning to aft end of cockpit in grey
- Reticulated foam fitted to all standard exterior cockpit, aft sunbed and foredeck seating
- Electric stern rope handling winches (2)
- Foredeck teak coffee table (deck mounted fixing point)
- Reticulated foam fitted to foredeck seating
- Foredeck sunbed cushions with adjustable headrests
- All exterior upholstery in Comfort Exterior III Met Ice with V Class Met Sterling contrast detailing

Princess V55

Price on Application

Year **2026** 

Lying **Southampton, GB** 

Ref **PNV55132** 

- Folding director's armchair (2) for use at cockpit dining
- Stainless steel Epsilon anchor (32Kg)
- Additional 20m of 9.5 mm anchor chain (total 60m)
- Aft deck wash located in starboard transom locker
- Underwater transom lights (4 Lumishore SMX54 Blue/White)
- Stern docking lights on canopy overhang
- Icemaker in wetbar
- Foredeck freshwater anchor/deckwash system

Interior Fitout

- Walnut interior wood satin finish, galley, saloon and helm floors are V groove planked walnut as standard
- Aft cabin fit out (single berth, WC, hand basin and non-slip safety flooring)
- Forward cabin scissor berth conversion
- U-shaped sofa in saloon
- Saloon full-size dining/coffee table with twin electrically operated leg mechanisms. Table reduces in length by 50% when folded and has a sliding mechanism to allow for use as a coffee table
- Interior styling (Allure Collection) including helm seat upholstery and teak step nosings
- Interior soft furnishings and upholstery (detailed fabric selections for all cabins and saloon)
- Seychelles Alabaster carpet
- Bed linens and throws for all cabins

Interior Equipment

- Stools (2) for saloon dining table
- Combination washer/dryer in master stateroom lobby
- Fully integrated dishwasher in galley
- Princess China (5-piece set, 6 place settings)
- David Mellor 'Paris' cutlery (7-piece set, 6 place settings)
- Princess glasses (6 wine, 6 tumbler)
- Mosquito screens for all opening portholes

Princess V55

Price on Application

Year **2026** 

Lying **Southampton, GB** 


Ref **PNV55132** 



Princess V55

Price on Application

Year **2026** 

Lying **Southampton, GB** 

Ref **PNV55132** 



Princess V55

Price on Application

Year **2026** 

Lying **Southampton, GB** 

Ref **PNV55132** 



Princess V55

Price on Application

Year 2026 

Lying **Southampton, GB** 


Ref **PNV55132** 



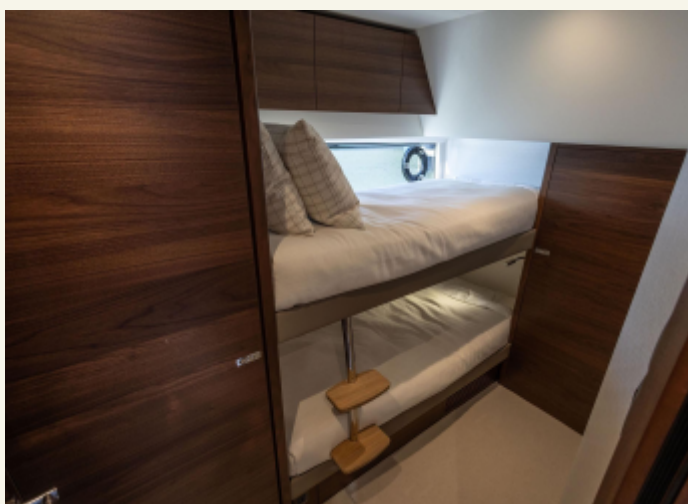
Princess V55

Price on Application

Year 2026 

Lying **Southampton, GB** 

Ref **PNV55132** 



Princess V55

Price on Application

Year **2026** 

Lying **Southampton, GB** 

Ref **PNV55132** 



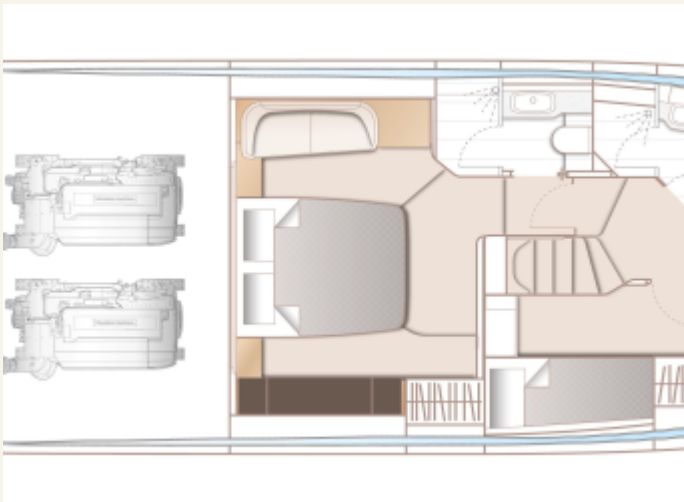
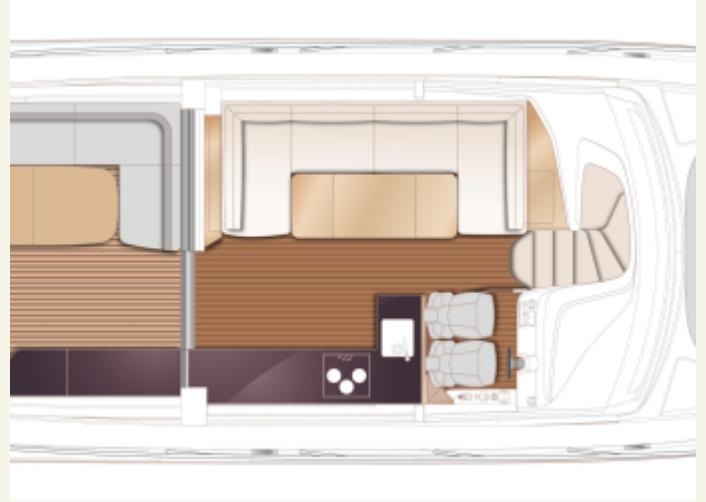
Princess V55

Price on Application

Year **2026** 

Lying **Southampton, GB** 

Ref **PNV55132** 



FINANCE AND INSURANCE
AVAILABLE ON THIS
PRINCESS YACHT

Contact
finance@princess.co.uk
insurance@princess.co.uk
for information.


PRINCESS
OFFICIAL DISTRIBUTOR
UK / SPAIN / GERMANY

PRINCESS MOTOR YACHT SALES




PRINCESS
OFFICIAL DISTRIBUTOR
UK / SPAIN / GERMANY

PRINCESS MOTOR YACHT SALES

T: +44 (0)1489 557755
E: ukdirect@princess.co.uk
www.princess.co.uk