

F

CLASS

PRINCESS 55





PRINCESS 55

From the moment you step aboard, luxurious space is a constant companion. A timeless elegant exterior profile is fused with ingenious interior layout solutions to deliver one of the most technically advanced and spaciouly proportioned flybridge yachts on the water. Below, expansive hull windows create a sense of constant forward motion while generously flooding the interior with light. This oasis of calm can then be propelled to a top speed approaching 33 knots, and all with nimble composure. Magnificent refinement and performance, in equal measure.

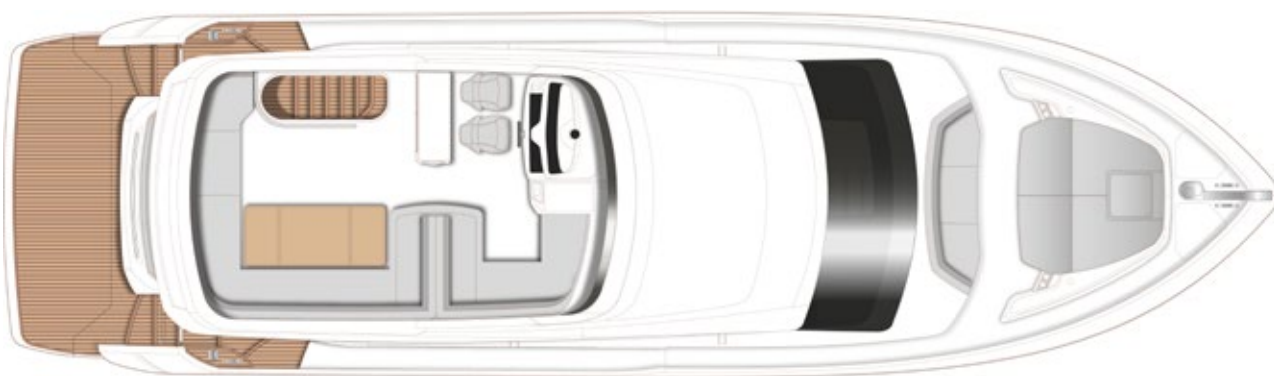
Vous posez un pied à bord et c'est l'immersion dans le luxe et l'espace. L'élégance sans âge de ses lignes profilées se marie à l'ingéniosité des solutions d'aménagement intérieur pour donner naissance à un yacht spacieux et technologiquement en pointe qui se classe en tête des flybridges naviguant actuellement. Au pont inférieur, de généreuses fenêtres de coque créent une sensation omniprésente d'élan et de vitesse et inondent de lumière l'intérieur. Cette oasis de sérénité se propulse jusqu'à une vitesse maximale de près de 33 nœuds, avec aplomb et agilité. L'équilibre du raffinement et de la performance.

من لحظة صعودك إلى متن اليخت، يلازمك شعور بالفخامة. فأناقة التصميم الخارجي تمتزج بعبقيرية التنسيق الداخلي فيكون نتاج ذلك يختاً يمتاز بالتقدم الفني والاتساع والرحابة. وبالأسفل، تعطيك النوافذ الضخمة شعوراً مستمراً بالتحرك نحو الأمام وتغمر المكان أيضاً بالضوء الوفير. إلا أن هذه الواحة الهادئة يمكن أن تنطلق بسرعة تناهز 33 عقدة برشاقة وسكون. فهي مثال للرفقي والأداء في آن واحد.

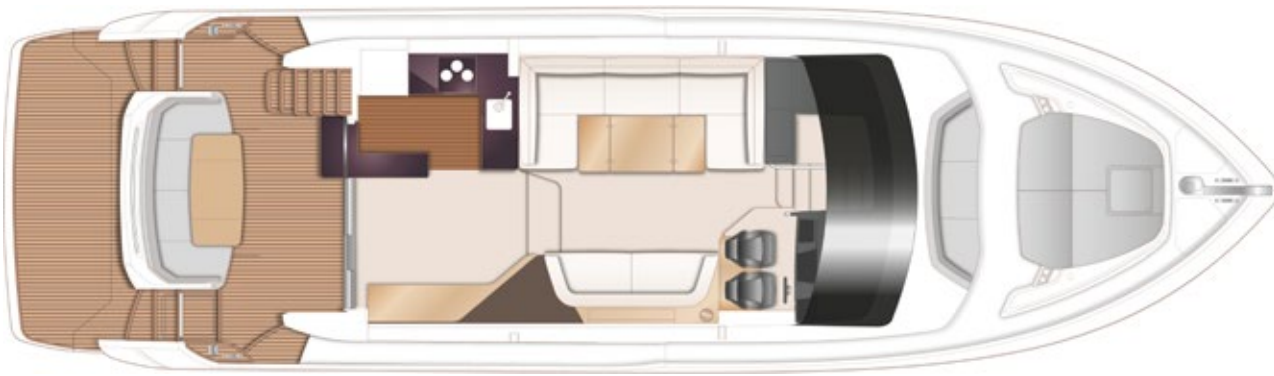
Una volta saliti a bordo, il lusso degli spazi è l'elemento costante che accompagna lo sguardo. Un profilo esterno elegante e senza tempo si unisce a soluzioni ingegnose per l'organizzazione degli interni, dando vita a uno dei flybridge più spaziosi e tecnicamente avanzati che abbia mai solcato il mare. Sottocoperta, le ampie finestre inondano gli interni di luce. Un' oasi di tranquillità che può raggiungere una velocità massima di circa 33 nodi, il tutto mantenendo un'agile compostezza. Le rifiniture sono impeccabili e le prestazioni ottime, in egual misura.

С самых первых минут на борту этой яхты вы будете окружены роскошью. Классический и элегантный стиль ее корпуса сочетается с неординарными решениями в интерьере. Princess 55 — одна из самых технически совершенных и просторных флайбриджных яхт в мире. Широкие иллюминаторы нижней палубы придают ее корпусу динамики, наполняя внутренние помещения естественным светом. Princess 55 способна развивать скорость до 33 узлов, при этом оставаясь оазисом спокойствия и безмятежности. Эта яхта гармонично сочетает изящество и выдающиеся технические характеристики.

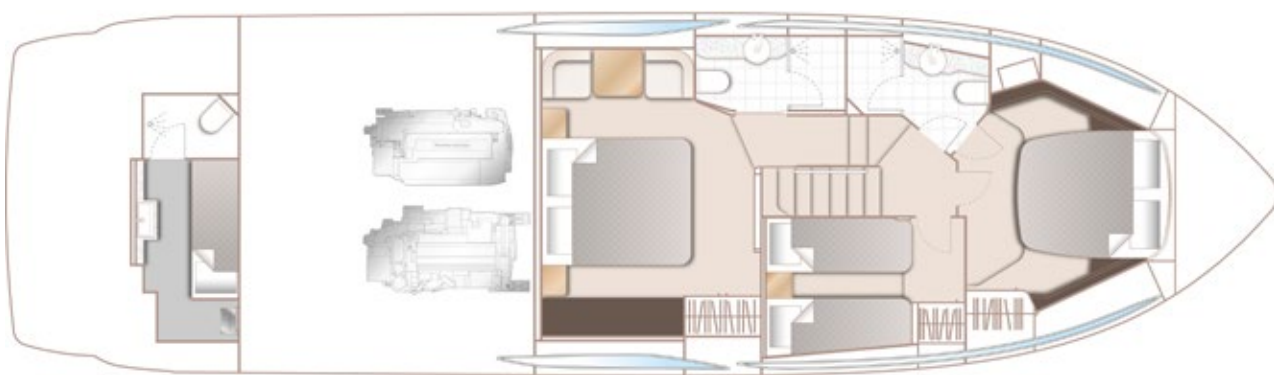
PRINCESS 55



FLYBRIDGE



MAIN DECK



LOWER DECK

PRINCESS 55

ENGLISH

PRINCIPAL DIMENSIONS

Length overall (Incl. pulpit)	57ft 9in (17.6m)
Length overall (excl. pulpit)	56ft 7in (17.24m)
Beam	16ft 0in (4.87m)
Draft approx	4ft 10in (1.46m)
Displacement approx	24,600kg (54,234lbs)*
Fuel capacity	605 gal/726 US gal/2,750l
Water capacity (Incl. calorifier)	134 gal/161 US gal/608l

ENGINE OPTION - DIESEL

Twin Volvo D13-800 (2 x 800hp)	Maximum speed - up to 32.5 knots*
--------------------------------	-----------------------------------

DECK FITTINGS

- Teak-laid transom platform, cockpit deck, flybridge stairway and steps to side deck
- Self-stowing 25kg/55lb Delta anchor with 40m of chain
- Reversible electric anchor winch with foredeck and helm position controls
- Foredeck seating and sunbathing area
- Stainless steel cleats, fairleads and handrails
- Dual station remote control searchlight
- Freshwater deck/anchor wash
- Storage lockers for fenders and ropes
- LED deck level lighting

COCKPIT

- U-shaped seating with folding teak table
- Locker housing 220/240v shore support inlet
- Lockable gas strut assisted hatch to engine room, lazarette and optional crew cabin
- Twin transom gates leading to bathing platform (with optional electro-hydraulic raise/lower mechanism and dinghy chock system)
- Transom bathing platform with foldaway swimming ladder and hot and cold shower
- Rope storage locker
- Cockpit cover

FLYBRIDGE

- Dual station instrumentation, controls and alarm system including VHF/RT, speed and distance log, echo sounder with alarm and autopilot
- U-shaped seating area with folding teak table
- Forward L-shaped seating (converts to sunbed)
- Radio/MP3 with waterproof speakers
- Top loading coolbox adjacent to helm
- Wetbar including sink, stowage and optional electric barbecue
- Liferaft stowage
- Console and seat covers

LOWER HELM POSITION

- Twin helm seats with fore and aft adjustment for helmsman
- Electric opening window
- Full engine instrumentation including fuel gauges, exhaust temperature and engine warning system and rudder position indicator
- Navigation system including VHF/RT, speed and distance log, echo sounder with alarm, autopilot and high-speed magnetic compass

- Controls for joystick, bow thrusters, windscreen wipers, bilge pump and trim tab with indicators
- 24v and 240v electrical control panel
- Black mesh sunscreens
- USB connection point
- Red night lighting

DECK SALOON

- U-shaped sofa with folding leaf dining table or coffee table
- Two seater sofa
- 49" LED TV with electric raise/lower mechanism
- Stereo radio/DVD/MP3 player
- Sideboard unit with bottle and glass storage
- Crockery storage drawer

GALLEY

- 4-zone ceramic hob
- Combination microwave/convection oven with grill
- Stainless-steel sink with mixer tap
- Full height fridge/freezer (270l)
- Waste bin
- Storage cupboards and draws
- Stainless steel framed sliding doors to cockpit with integrated hinging window aft of galley

ACCOMMODATION

- All cabins and bathrooms feature opening portholes
- All cabins feature 220/240v power points
- All mattresses pocket sprung (excluding optional crew)
- All bathrooms feature electric freshwater toilets, extractor fan and 240v shaver points

OWNER'S STATEROOM

- Large double bed with drawers below
- Wardrobe with shelves
- Storage lockers and drawers
- Vanity unit with pull out mirror
- Occasional table with fore and aft seating
- Radio/iPod/MP3 player
- Overhead and individual berth lights
- USB connection point
- En suite bathroom

FORWARD STATEROOM

- Large double bed with drawers below
- Wardrobe with shelves and mirror
- Dressing table
- Storage lockers
- Deck hatch

- Overhead and individual berth lights
- USB connection point
- En suite with day access

STARBOARD GUEST CABIN

- Two single beds with drawers below (with option of sliding berths)
- Wardrobe with shelves
- Storage lockers and drawers
- Overhead and individual berth lights
- USB connection point

OPTIONAL AFT CABIN

- Single bed with storage below
- Wardrobe with shelf
- Overhead and individual berth lights
- Bathroom with toilet, washbasin and shower

INTERIOR FINISH

- Furniture in Rovere Oak with satin or high gloss finish. Walnut or Alba Oak available as an option
- Solid surface worktops and tiled floors in all guest bathrooms
- Solid surface worktop and timber-laid floor in galley
- Choice of high quality carpet and upholstery fabric from extensive range
- Curtains, blinds or sunscreens to all windows and portholes
- Optional crew cabin fitted with non slip safety flooring

POWER AND DRIVE SYSTEMS

- 4-bladed propellers in nickel aluminum bronze
- Bow thruster (130kgf/286lbf)
- Power-assisted electric steering system with hydraulic back-up
- Electronic engine and gear shift controls
- Engine room extractor fans with electronic time delay
- Dripless shaft seals

ELECTRICAL SYSTEMS

- 24 Volt:
- 4 x heavy duty batteries for engine starting
- 4 x heavy duty auxiliary batteries
- Battery link facility with remote control at helm position
- 60 amp battery charger charges both banks of batteries via an automatic switch charging system

- Remote battery master switches with control switch at main switch panel
- LED lighting throughout

220/240 Volt:

- 9.5Kw diesel generator in own sound shield with water cooled specially silenced exhaust
- 50 amp shore support inlet
- Earth leakage safety trip, polarity check system, circuit breakers on all circuits
- Power points in all areas

FUEL SYSTEM

- Twin fuel tanks (in NS8 marine grade alloy) with interconnection system giving 605 gal/726 US gal /2,750l capacity
- Fuel fillers on port and starboard side decks
- High-capacity duplex fuel filters/water traps with audible and visual fuel contamination warning system
- Remote fuel cocks in cockpit locker

WATER SYSTEM

- 118 gal/141 US gal/535l plus 16 gal/19 US gal/73l hot water calorifier, heated by engines and 240v immersion heater
- Automatic water pump with filter
- Water level gauge
- Deck filler
- Electric freshwater WC system with 69 gal/83 US gal/315l holding tank

FIRE EXTINGUISHERS

- Automatic/manual override fire extinguishers in engine room with warning system at both helm positions
- Hand-operated fire extinguishers in all cabins, galley and lower helm (5)

BILGE PUMPS

- Automatic electric bilge pumps (5)
- High-capacity manual bilge pump with valve system and suction points in same areas

OTHER ITEMS SUPPLIED AS STANDARD

- Ensign staff
- Fenders (6) and warps (4)
- First Aid kit
- Tool kit
- Set of manuals
- Quilted bedspreads supplied to all cabins (except optional crew cabin)

*Displacements are calculated with 50% fuel and water but with no optional equipment fitted or other gear or crew aboard. † Maximum speeds will vary depending on cleanliness of hull, condition of sterngear, loading of craft, water and air temperatures, sea conditions and other factors. Speed estimates are therefore given in good faith but without warranty or liability on the part of Princess Yachts Limited. Craft illustrated in this brochure may be fitted with certain optional equipment. Specifications may be changed at any time without notice or liability. USA Specification ‡ Princess yachts built for use in North America are certified by the National Marine Manufacturer's Association (NMMA) to comply with safety recommendations set forth by the American Boat and Yacht Council (ABYC) and with standards established by the United States Coast Guard Office of Boating Safety. In addition, certain other specifications, which vary by model, are upgraded on Princess yachts built for use in North America. Thus, specifications and equipment will vary from the information listed in the brochure for North American Princess yachts (e.g. air-conditioning and an upgraded generator will be included as standard for all North American models and electric cooking facilities will be supplied in place of gas systems). Please consult the USA Specification Brochure for full details regarding the North American specifications for individual models.

*Les déplacements sont calculés avec 50 % de carburant et d'eau, mais sans le montage d'équipements en option ou d'autre matériel et sans équipage à bord. † Les vitesses maximum varient en fonction de la propreté de la coque, de l'état du dispositif de propulsion, du chargement de l'embarcation, des températures de l'eau et de l'air, de l'état de la mer et d'autres facteurs. Par conséquent, les vitesses estimées sont indiquées de bonne foi mais sans garantie ni responsabilité de la part de Princess Yachts Limited. Les bateaux figurant dans cette brochure peuvent être équipés de certains équipements en option. Les spécifications peuvent être modifiées à tout moment sans préavis et sans engagement de notre part. Spécification pour les USA : ‡ Les yachts Princess construits pour être utilisés en Amérique du Nord sont certifiés par l'Association nationale des fabricants de l'industrie nautique (NMMA) comme étant conformes aux recommandations en matière de sécurité énoncées par le Conseil américain des bateaux et yachts de croisière (ABYC) et selon des normes définies par l'agence américaine des gardes-côtes et de la sécurité nautique. De plus, certaines autres spécifications, qui varient selon les modèles, sont optimisées sur les yachts Princess construits pour être utilisés en Amérique du Nord. Par conséquent, pour les yachts Princess destinés à l'Amérique du Nord, ces spécifications et équipements diffèrent des informations figurant dans la présente brochure (par ex. la climatisation et un générateur amélioré seront inclus de façon standard pour tous les modèles pour l'Amérique du Nord et des équipements électriques de cuisson seront fournis au lieu d'équipements fonctionnant au gaz). Veuillez consulter la brochure spécifiquement destinée aux USA pour tous les détails concernant les spécifications des différents modèles pour l'Amérique du Nord.

*تم حساب كميات السائل المزاج باستخدام 50% وقود وماء ولكن بدون معدات اختيارية مثبتة أو أجهزة أخرى أو طاقم على متن اليخت. † تختلف السرعات القصوى بناءً على نظافة الهيكل وحالة المروحة للسفينة وحمولة القارب ودرجات حرارة الماء والهواء وحالات البحر وغيرها من العوامل. من ثم، فإن تقديرات السرعة معطاة بنية حسنة ولكن دون ضمان أو مسؤولية من جانب شركة برنيسيس ياكنتس المحدودة. قد يُجهز القارب الموضح في هذه النشرة بمعدات اختيارية محددة. قد تتغير المواصفات في أي وقت دون إخطار أو مسؤولية. المواصفات الأمريكية ‡ يخوت برنيسيس المبنية للاستخدام في أمريكا الشمالية معتمدة من قبل الرابطة الوطنية للشركات المصنعة البحرية (NMMA) لتتفق مع توصيات السلامة التي ينص عليها المجلس الأمريكي للقوارب واليخوت (ABYC) ومع المعايير المقررة من مكتب حرس السواحل الأمريكي والمتعلقة بسلامة القوارب. بالإضافة إلى ذلك تتم ترقية مواصفات محددة أخرى، قد تختلف حسب الطراز، عند بناء يخوت برنيسيس للاستخدام في أمريكا الشمالية. وبالتالي، فالمواصفات والمعدات تختلف عن المعلومات الواردة في هذه النشرة بالنسبة ليخوت برنيسيس الأمريكية الشمالية (على سبيل المثال، سيتم تضمين تكييف الهواء والمولد الحديث كمعيار لجميع طرز أمريكا الشمالية وسيتم توفير مرافق الطهي الكهربائية بدلاً من أنظمة الغاز). فيرجى مراجعة نشرة المواصفات الأمريكية لمعرفة التفاصيل الكاملة المتعلقة بمواصفات أمريكا الشمالية بالنسبة للطراز الفردية.

* I pesi riportati nel presente catalogo si riferiscono a imbarcazioni con mezzo carico di carburante e di acqua ma non comprendono l'installazione di accessori opzionali o la presenza di equipaggio a bordo. † Le velocità riportate sono indicative e dipendono dal carico, dalla pulizia della carena, dalla perfetta efficienza degli apparati meccanici e dalle condizioni atmosferiche e di mare. Pertanto, le stime delle velocità sono fornite in buona fede ma senza alcuna garanzia o responsabilità da parte di Princess Yachts Limited. Sulle imbarcazioni illustrate in questo catalogo sono montati anche accessori e strumentazioni opzionali. I dati tecnici sono soggetti a modifiche in qualsiasi momento senza preavviso. Specifica per gli USA ‡ Gli yacht Princess destinati al mercato del Nord America sono certificati dall'Associazione che riunisce i produttori di imbarcazioni, motori marini e accessori del Nord America (NMMA) e sono conformi alle raccomandazioni in materia di sicurezza previsti dall'American Boat and Yacht Council (ABYC) e agli standard previsti dalla United States Coast Guard Office of Boating Safety. Inoltre, altre specifiche che variano da modello a modello, sono aggiornate sugli yacht Princess destinati al mercato del Nord America. Pertanto, specifiche e attrezzature possono differire dalle informazioni riportate nella brochure per gli yacht Princess destinati al Nord America (ad es., l'impianto di climatizzazione e un generatore aggiornato faranno parte della dotazione di serie di tutti i modelli destinati al mercato nordamericano, mentre in sostituzione degli impianti a gas verranno fornite attrezzature da cucina elettriche). Per conoscere tutti i dettagli relativi alle specifiche nordamericane per i singoli modelli, si prega di consultare la brochure specifica per il mercato USA.

*Водоизмещения вычисляются с учётом 50% запаса топлива и воды, но без учёта установленного и иного дополнительного оборудования и веса членов команды. † Максимальные скорости зависят от чистоты корпуса, состояния действующего устройства, загрузки судна, температур воды и воздуха, состояния моря и других факторов. Поэтому оценки скоростей произведены добросовестно, но без гарантий и ответственности со стороны Princess Yachts Limited. Любое судно, изображённое в данной брошюре, может быть оснащено дополнительным оборудованием. Спецификации могут быть изменены в любое время без уведомления и обязательств. Спецификация США ‡ Яхты Princess, построенные для эксплуатации в Северной Америке, сертифицированы Национальной Морской Ассоциацией Производителей (NMMA) с учётом рекомендаций по обеспечению безопасности, установленных Яхтенным Советом (ABYC), и соответствуют нормам, установленным Управлением Береговой Охраны Соединённых Штатов по Яхтенной Безопасности. Кроме того, некоторые характеристики, которые изменяются в моделях, будут обновлены на Princess Yachts, построенных для использования в Северной Америке. Таким образом, технические характеристики и оборудование могут отличаться от информации, представленной в данной брошюре для североамериканских яхт Princess (например, изменён генератор кондиционирования воздуха, и он будет включён в стандартную комплектацию для всех североамериканских моделей, электрическая плита поставляется вместо газовой). Пожалуйста, обратитесь к брошюре для США, чтобы получить полную информацию о североамериканской спецификации отдельных моделей.

F

CLASS



PRINCESS YACHTS

Newport Street, Plymouth, Devon, PL1 3QG, UK Tel: +44 (0) 1752 203 888

www.princessyachts.com info@princessyachts.com