



CLASS

V60



V60

The elegant lines of the all-new V60 encapsulate an expansive and sociable cockpit arrangement with a generous seating area and fully equipped wetbar with barbecue. Forward on the main deck a retractable sunroof reveals the skies above at the touch of a button. When at anchor, the electro-hydraulic bathing platform creates a convenient launch system for a 3m tender, a jet ski, or it simply becomes a secluded swimming platform. Below deck, six guests are comfortably accommodated across an en suite full-beam master stateroom and two further guest cabins.

As linhas elegantes do novíssimo V60 combinam um arranjo do cockpit amplo e que facilita a socialização, com uma área ampla com assentos e um minibar inteiramente equipado com churrasqueira. À frente no deck principal, um teto solar retrátil se abre para o céu com o toque de um botão. Quando fundeado, a plataforma de banho eletro-hidráulica cria um sistema de lançamento conveniente para um tender de 3m, um jet-ski, ou simplesmente torna-se uma plataforma de natação isolada. Abaixo do deck, podem ser acomodados seis convidados confortavelmente em uma cabine principal tipo suite, que ocupa a largura total do iate e duas cabines adicionais para convidados.

全新 V60 线条优美，后甲板宽阔，布局适合社交活动，有一个大型座位区以及设施齐全的吧台，还可以烧烤。主甲板前部配备一个可伸缩天窗，只需轻触按钮，天空即呈现眼前。抛锚停泊时，电动液压沐浴平台可充当一个可供 3 米长的橡皮艇或水上摩托艇使用的便捷平台，也可单纯作为一个游泳平台。甲板下面有一个全船宽主卧舱和两个客舱，舒适惬意，一共可容纳六人。

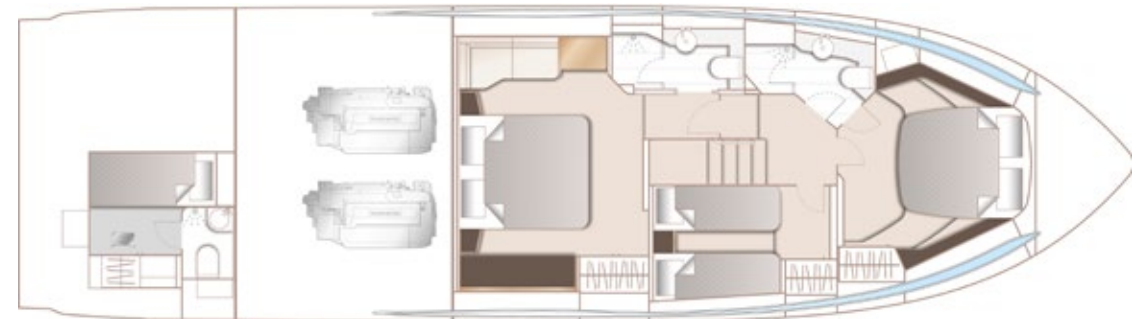
Las elegantes líneas del nuevo V60 encapsulan un diseño de la bañera amplio y sociable, con una generosa zona de asientos y con barra con fregadero totalmente equipada y barbacoa. Con el toque de un botón, en la cubierta principal de proa un techo solar retráctil deja al descubierto los cielos. Cuando está anclado, la plataforma de baño electro-hidráulica crea un conveniente sistema de lanzamiento para una auxiliar de 3m, para una moto acuática, o simplemente se convierte en una plataforma de baño aislada. Debajo de la cubierta, seis huéspedes se acomodan confortablemente a través de un camarote principal que ocupa toda la manga y de dos camarotes adicionales para huéspedes.

Die eleganten Linien der völlig neuen V60 bilden den Rahmen für ihr großzügiges und geselliges Cockpit mit reichlich Sitzgelegenheiten sowie eine komplett ausgestattete Bar mit Grill. Weiter vorne auf dem Hauptdeck gibt das Schiebedach mit nur einem Knopfdruck den Blick auf den Himmel frei. Vor Anker können ein 3 Meter langes Beiboot oder ein Jetski bequem mit der elektrohydraulischen Badeplattform zu Wasser gelassen werden, die ansonsten auch als ruhig gelegener Schwimmbereich ideal geeignet ist. Unter Deck bietet die V60 ausreichend Platz für sechs Gäste in einer die volle Breite einnehmenden Eignerkabine mit eigenem Bad und in zwei weiteren Gästekabinen.





MAIN DECK



LOWER DECK

PRINCIPAL DIMENSIONS

Length overall (incl. pulpit)	62ft 11in (19.17m)
Length overall (excl. pulpit)	62ft 1in (18.92m)
Beam	16ft 0in* (4.87m)
Draft (at full load) approx	5ft 0in (1.5m)
Displacement approx (lightship)	27,200kg (59,966lbs)*
Fuel capacity	715 gal/858 US gal/3,250l
Water capacity (incl. calorifier)	132 gal/178 US gal/603l

DECK FITTINGS

- Teak-laid transom platform, cockpit deck and steps to side deck
- Reversible electric anchor winch with foredeck and helm position controls
- Self-stowing 40kg/88lb Delta anchor with 40m of chain
- Foredeck seating and sunbathing area
- Remote control searchlight
- Stainless steel cleats, fairleads and handrails
- Freshwater deck/anchor wash
- Storage lockers for rope, fenders and foredeck sunbed cushions
- LED deck level lighting

COCKPIT

- U-shaped seating with folding teak table and folding directors chairs
- Sunbed aft with garage below (3.3m tender)
- Twin transom gates leading to bathing platform with electro-hydraulic raise/lower mechanism, foldaway swimming ladder and hot and cold shower
- Speakers linked to deck saloon sound system
- Lockable gas strut assisted hatches to engine room, lazarette and optional crew cabin
- Liferaft storage locker
- Locker housing 220/240v shore support inlet
- Locker with remote fuel cocks
- Cockpit cover
- Wetbar with barbecue, coolbox and storage

HELM POSITION

- Twin helm seats with fore and aft adjustment for helmsman
- Electric opening windows at helm position and to port
- Full engine instrumentation including fuel gauges and rudder position indicator
- Navigation system including colour radar, GPS and chartplotter, VHF/RT, speed and distance log, echo sounder with alarm, autopilot and high speed magnetic compass
- Controls for bow thruster, windscreen wipers, bilge pump, anchor winch and trim tabs (with indicator)
- 24v and 240v control panel

- Remote control searchlight
- Toughened glass screen (clear for night vision)

DECK SALOON

- U-shaped sofa and coffee table
- 49" LED TV on electric raise/lower mechanism and DVD, radio/MP3 system with surround sound system
- Sideboard unit with bottle and glass storage and refrigerator
- L-shaped dining area with folding table
- Electric opening roof
- Stainless steel framed sliding doors and electric powered aft window to cockpit

GALLEY

- 4-zone ceramic hob
- Combination microwave/convection oven with grill
- Stainless-steel sink with mixer tap
- Full-height fridge/freezer (270l)
- Storage cupboards, drawers and lockers

ACCOMMODATION

- All cabins and bathrooms feature opening portholes
- All cabins feature 220/240v power points
- All mattresses pocket sprung (excluding crew)
- All bathrooms feature full shower stalls, electric freshwater toilets, extractor fan and 240v shaver points

OWNER'S STATEROOM

- Large double bed with drawers below
- Wardrobes with hanging and drawer storage
- Dressing table
- Sofa
- Storage lockers and drawers
- 40" HD LED TV
- Radio/DVD/MP3 player
- Overhead and individual berth lights
- En suite bathroom

FORWARD STATEROOM

- Large double bed with drawers below
- Wardrobe with shelves
- Dressing table
- Storage lockers
- Deck hatch

ENGINE OPTION - DIESEL

Twin MAN V8 1200 (2 x 1,200hp)	Maximum speed - up to 38 knots*
--------------------------------	---------------------------------

- Overhead and individual berth lights
- En suite bathroom with day access

STARBOARD GUEST CABIN

- Two single beds with drawers below with optional powered sliding conversion to double
- Wardrobe with shelves
- Storage lockers and drawers
- Overhead and individual berth lights

CREW CABIN (OPTIONAL)

- Single berth with storage below
- Wardrobe with shelf
- Storage lockers
- Overhead and individual berth light
- Bathroom with shower, electric freshwater toilet and washbasin

INTERIOR FINISH

- Furniture in Rovere Oak with satin or high gloss finish. Walnut or Alba Oak available as an option.
- Solid surface floors and counter tops in all bathrooms
- Solid surface worktops in galley
- Timber-laid galley, dining, saloon and helm areas
- Choice of high quality carpet and upholstery fabric from extensive range
- Blinds or sunscreens to all windows and portholes
- Optional crew cabin fitted with non slip safety flooring

POWER AND DRIVE SYSTEMS

- 5-bladed propellers in nickel aluminium bronze
- Bow thruster (130kgf/287lbf)
- Power-assisted electro-hydraulic steering system with hydraulic backup
- Electronic engine and gear shift controls
- Dripless shaft seals
- Engine room extractor fan with electronic time delay

ELECTRICAL SYSTEMS

- 24 Volt:
- 4 x heavy duty batteries for engine starting
- 4 x heavy duty auxiliary batteries
- 60 amp battery charger charges both banks of batteries via an automatic switch charging system

- Remote battery switches with control switch at main switch panel
- LED lighting throughout

220/240 Volt:

- 11kw diesel generator in own sound shield with water cooled specially silenced exhaust
- Polarity check system
- Earth leakage safety trip
- Power points to all areas

FUEL SYSTEM

- Twin fuel tanks (in NS8 marine grade alloy) with interconnection system giving 715 gal/858 US gal/3,250l capacity
- Fuel fillers on port and starboard side decks
- High-capacity fuel filters/water traps

WATER SYSTEM

- 116 gal/159 US gal/530l plus 16 gal/19 US gal/73l hot water calorifier and heated by engines and 240v immersion heater
- Water level gauge
- Deck filler
- Electric freshwater WC system with 55 gal/66 US gal/250l holding tank

FIRE EXTINGUISHERS

- Automatic/manual override fire extinguishers in engine room with warning system at helm position
- Hand-operated fire extinguishers (5) in owner's stateroom, guest cabins, galley and helm position

BILGE SYSTEMS

- Automatic electric bilge pumps (6)
- High-capacity manual bilge pump with valve system and bilge suction points in same areas

OTHER ITEMS SUPPLIED AS STANDARD

- Quilted bedspreads supplied to all cabins (except optional crew cabin)
- Ensign staff
- Fenders (6) and warps (4)
- First Aid kit
- Tool kit
- Set of manuals
- Anchor winch back up handle

*Displacements are calculated with 50% fuel and water but with no optional equipment fitted or other gear or crew aboard. † Maximum speeds will vary depending on cleanliness of hull, condition of sterngear, loading of craft, water and air temperatures, sea conditions and other factors. Speed estimates are therefore given in good faith but without warranty or liability on the part of Princess Yachts Limited. Craft illustrated in this brochure may be fitted with certain optional equipment. Specifications may be changed at any time without notice or liability. USA Specification ‡ Princess yachts built for use in North America are certified by the National Marine Manufacturer's Association (NMMA) to comply with safety recommendations set forth by the American Boat and Yacht Council (ABYC) and with standards established by the United States Coast Guard Office of Boating Safety. In addition, certain other specifications, which vary by model, are upgraded on Princess yachts built for use in North America. Thus, specifications and equipment will vary from the information listed in the brochure for North American Princess yachts (e.g. air-conditioning and an upgraded generator will be included as standard for all North American models and electric cooking facilities will be supplied in place of gas systems). Please consult the USA Specification Brochure for full details regarding the North American specifications for individual models.

*As deslocacões são calculadas com 50% de combustível e água, mas sem equipamentos opcionais instalados ou outros equipamentos ou tripulação a bordo. † As velocidades máximas irão variar conforme a limpeza do casco, a condição do eixo propulsor da popa, a carga da embarcação, as temperaturas da água e do ar, as condições do mar e outros fatores. As estimativas de velocidade são portanto apresentadas de boa-fé, mas sem garantia ou responsabilidade por parte da Princess Yachts Limited. As embarcações ilustradas neste livro podem estar equipadas com alguns equipamentos opcionais. As especificações podem ser alteradas a qualquer momento, sem aviso prévio ou responsabilidade por parte do fabricante. Especificação dos EUA ‡ Os iates Princess produzidos para uso na América do Norte são certificados pela National Marine Manufacturer's Association (NMMA), para ficarem em conformidade com as recomendações de segurança estabelecidas pelo American Boat and Yacht Council (ABYC) e com as normas estabelecidas pela United States Coast Guard Office of Boating Safety. Além disso, algumas outras especificações, que variam conforme o modelo, são aprimoradas nos iates da Princess produzidos para uso na América do Norte. Assim, especificações e equipamentos irão diferir em relação às informações listadas no livro para os iates da Princess destinados à América do Norte (p. ex., condicionamento de ar e um gerador aprimorado serão incluídos como padrão, para todos os modelos norte-americanos, e para a cozinha serão fornecidas instalações elétricas em vez de sistemas a gás). Consulte o livro de Especificações dos EUA para obter todos os detalhes relativos às especificações de modelos individuais para uso na América do Norte.

*计算排量基于装有 50% 燃油和水但未安装任何可选设备,且船上无其他装备或船员的情况下计算。† 最高航速会存在差异,具体取决于船体清洁度、尾传动装置状况、游艇载荷、水及空气温度、海况及其他因素。因此,速度估计值仅出于诚信善意而提供,对 Princess Yachts Limited. 不构成保证或责任。本手册中所示游艇可能会装备某些可选设备。规格可能会随时更改,恕不另行通知或向阁下负责。美国规格 ‡ 专为北美洲建造的 Princess 游艇通过了美国船舶制造商协会 (NMMA) 的认证,符合美国船舶理事会 (ABYC) 的安全建议以及美国海岸警卫队船舶安全局所制订的标准。此外,为北美洲建造的 Princess 公主游艇可能在不同船型中有一些不同的配置。因此,面向北美洲的 Princess 游艇的规格和设备可能会与本手册所列的信息有所不同(如空调和升级发电机在所有北美洲型号上均为标配,并且将用电热烹调设施代替燃气系统)。有关个别型号的北美洲规格详情,请参见美国规范手册。

*Los desplazamientos se calculan con un 50% de combustible y agua pero sin equipamiento opcional u otros objetos o tripulación a bordo. † Las velocidades máximas varían dependiendo de la limpieza del casco, el estado de la estructura de proa, la carga de la embarcación, las temperaturas del agua y el aire, el estado del mar y otros factores. Las estimaciones de velocidad se ofrecen, por tanto, de buena fe pero sin que Princess Yachts Limited asuma garantía u obligación alguna respecto de las mismas. La embarcación que aparece en este folleto puede llevar equipamiento opcional. Las especificaciones podrán variar periódicamente sin previo aviso y sin que por ello se incurra en responsabilidad alguna. Especificación para EE.UU. ‡ Los yates Princess construidos para su uso en Norteamérica están certificados por la Asociación Nacional de Armadores de EE.UU. (NMMA) para cumplir con las recomendaciones de seguridad establecidas por el Consejo Americano de Barcos y Yates (ABYC) y con las normas que dicta la Oficina de Guardacostas de EE.UU. para la navegación. Además, otras especificaciones, que varían de unos modelos a otros, se mejoran en los yates construidos para utilizarse en Norteamérica. Por consiguiente, las especificaciones y el equipamiento serán distintos a los indicados en el folleto de los yates Princess para Norteamérica (ej. el aire acondicionado y un generador mejorado se incluirán como características estándar en todos los modelos norteamericanos, que además contarán con cocina eléctrica y no de gas). Consulte el folleto de especificaciones de EE.UU. para conocer detalladamente las de cada uno de los modelos para Norteamérica.

*Die Fahrten werden mit 50 % Kraftstoff und Wasser kalkuliert, aber ohne optionale passende Geräte oder weitere Ausrüstung oder Personal an Bord. † Die Höchstgeschwindigkeiten hängen von der Sauberkeit des Schiffsrumpfs, dem Zustand der Heckausstattung, der Schiffsladung, der Wasser- und Lufttemperatur, dem Seegang und weiteren Faktoren ab und können daher voneinander abweichen. Die Geschwindigkeiten werden in gutem Glauben geschätzt, aber ohne jegliche Garantie oder Verbindlichkeit seitens Princess Yachts Limited. Das in dieser Broschüre dargestellte Schiff kann mit bestimmter optionaler Ausstattung versehen werden. Die technischen Daten können ohne vorherige Ankündigung oder Haftung jederzeit geändert werden. Technische Daten für die USA ‡ Zur Benutzung in Nordamerika gebaute Princess-Yachten werden von der Nationalen Marineherstellervereinigung (NMMA, National Marine Manufacturer's Association) zertifiziert und entsprechen damit den Sicherheitsempfehlungen und Standards, so wie sie vom Amerikanischen Boots- und Yachtrat (ABYC, American Boat and Yacht Council) und vom Küstenwachenbüro für Bootsfahrtsicherheit in den Vereinigten Staaten entwickelt wurden. Außerdem werden bestimmte weitere technische Daten, die speziell zur Verwendung bei in Nordamerika gebauten Princess-Yachten aufgestellt wurden, aktualisiert und können je nach Modell unterschiedlich ausfallen. Die technischen Daten und die Ausstattung weichen somit von den in der Broschüre für nordamerikanische Princess-Yachten aufgeführten Angaben ab (z. B. Klimaanlage und ein überarbeiteter Generator werden standardmäßig in alle nordamerikanischen Bootsmodele eingebaut und elektronische Kocheinrichtungen werden statt Gaskochsystemen geliefert). Für die vollständigen technischen Daten für nordamerikanische Einzelmodelle konsultieren Sie bitte die Broschüre mit technischen Daten für die USA.



CLASS



PRINCESS YACHTS

Newport Street, Plymouth, Devon, PL1 3QG, UK Tel: +44 (0) 1752 203 888

www.princessyachts.com info@princessyachts.com