

X
CLASS



EXPERIENCE THE
EXCEPTIONAL

Your yacht is an extension of yourself. A statement of your lifestyle. She needs to deliver unforgettable experiences for you, your family and friends. Every Princess yacht is designed with our forward-thinking mentality and crafted with meticulous attention to detail. So whether you're dashing across the water or moored in your favourite bay, you will recognise the difference our design and details make, inside and out.

Experience the exceptional.



CRAFTED IN PLYMOUTH

Perched on the edge of the English Channel lies the city of Plymouth, where we established our home in 1965. Today Princess shipyards cover an area of over 1.1 million square feet, an area rich in British maritime heritage. In fact, South Yard, where our X Class Super Flybridge yachts are constructed, is a former naval yard dating back to the 17th century. From the outset, our goal has been to meticulously sculpt our yachts around our owners' enjoyment of them. Such dedication and attention to detail resonates deeply with our Plymouth craftspeople.

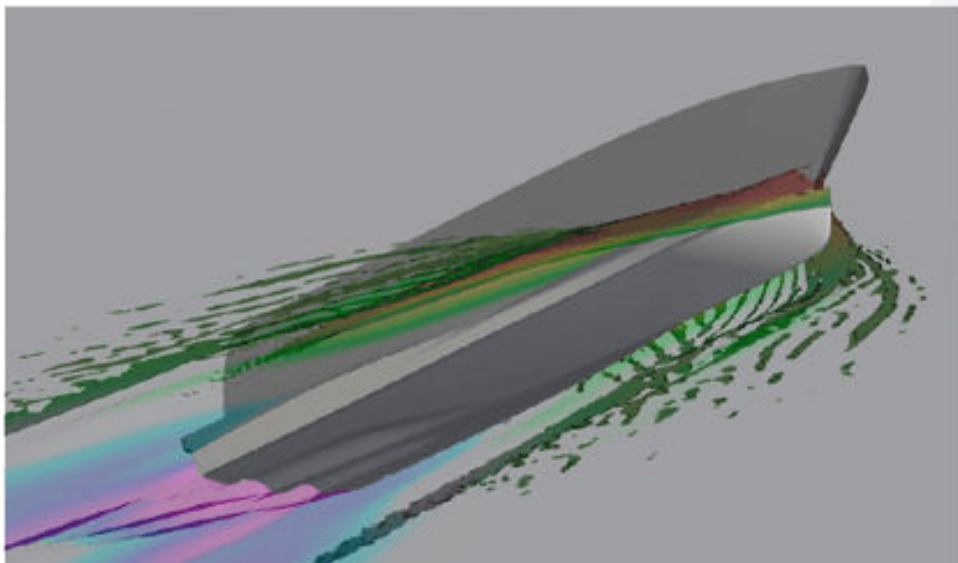
Over 3,000 people, each possessing a mastery of their skill, fastidiously realise this vision in our shipyards. Through a culture of innovation, our yachts are not only some of the most technically-advanced in the world but also the most beautifully realised.



DESIGNED FOR A LIFE LESS ORDINARY

Elegantly fusing architectural innovations with all the craftsmanship qualities you can expect from Princess, X Class is unique. Designed in collaboration with the winning combination of Olesinski and Pininfarina, X Class yachts set a new standard of layout excellence. Large adaptable spaces can be formatted in numerous ways, offering the owner and guests a uniquely flexible boating lifestyle. This 'open concept' delivers 10% more outdoor space and 40% more indoor space than a traditional motor yacht.





TECHNOLOGY FOR THE POWER TO EXPLORE

Already synonymous with developing hulls that deliver excellent sea-keeping, our X Class is no exception. In fact it's a giant leap forward in stability in all sea conditions and a 15% improvement in efficiency compared with traditional hull designs. To achieve this, machine learning methods were applied to computational fluid dynamics results to transform the well-proven qualities of our deep V hull. Efficiency across the speed range improved whilst maintaining the highest levels of sea-keeping and predictable handling. The wave-piercing bow extends the waterline forward, providing a fine, high deadrise entry. The benefits of this bow shape are further enhanced by extended hull surfaces aft under the bathing platform. These hulls will transition smoothly from highly efficient low



X CLASS

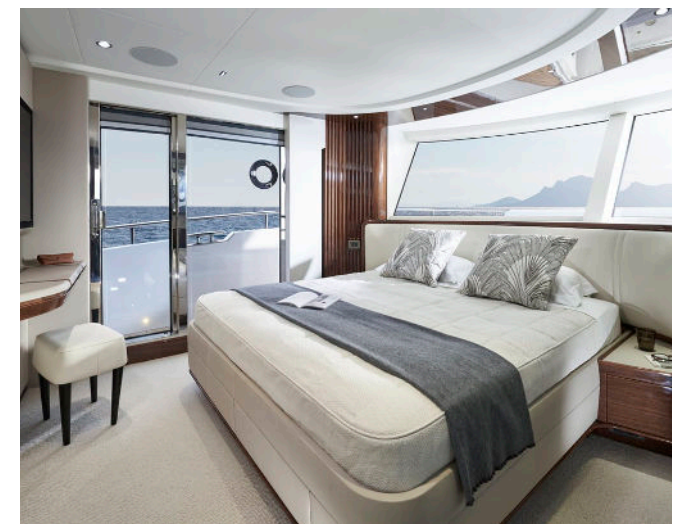
Experience an entirely new concept in yacht design - Super Flybridge yachts that completely rethink yacht architecture to set a new benchmark for luxury living space. Our new X Class is the perfect craft for those who wish to spend extended time aboard and voyage further afield.

X80



The beautifully sculpted surfaces and long flowing design lines of the X95 are carried through into her sister ship, the X80. The X80 becomes the second member of the X Class 'Superfly' family with a 'super flybridge' providing in excess of 30% more useful interior space onboard than a traditional flybridge yacht of its length. Available with an optional main deck master stateroom which includes a private owner's sundeck, the X80's capabilities for adventure provides the opportunity to explore cruising grounds further afield with the option of a long range 8,800 litre tank.





The X80 brings the outside in through the maximisation of glazing which flows along the entire length of the main deck encasing the saloon, galley and forward dining area. The use of light and innovative design continues below decks where 8 guests are accommodated across 4 en suite cabins, a full beam master stateroom located amidships, a forward guest stateroom, a double guest to starboard and a twin cabin to port. Located aft of the main accommodation is the crew quarters which can accommodate 3 crew with the standard layout. Life on-board the X80 really is unlike that of any other boat of its size.







EXPERIENCE THE X80

PRINCESS YACHTS PRESENTS

X80

© PRINCESS YACHTS MMXXI



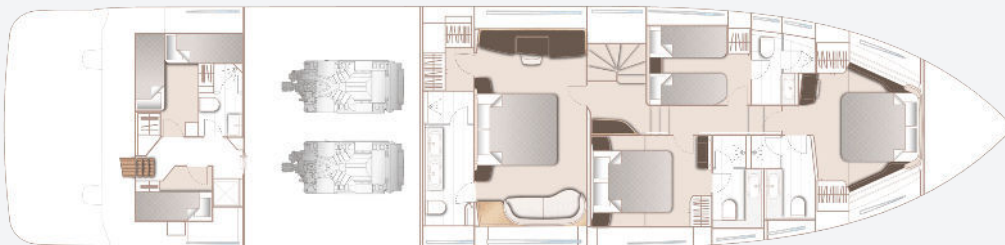
X80
SPECIFICATION



X80 Flybridge



X80 Main Deck



X80 Lower Deck

PRINCIPAL DIMENSIONS

Length overall (incl. pulpit)	82ft 7in (25.17m)
Length overall (excl. pulpit)	82ft 7in (25.17m)
Beam	19ft 11in (6.07m)
Draft approx. (half load)	5ft 10in (1.77m)
Displacement approx. (half load)	72,813kg (160,525lbs)*
Fuel capacity	1,540 gal/1,849 US gal/7,000l
Water capacity (excl. calorifier)	330 gal/396 US gal/1,500l

ENGINES

Twin MAN V12-1900 (2 x 1,900mhp)	Speed range: 29-31 knots [†]
---	--

FULL SPECIFICATION

DECK FITTINGS

- Teak-laid transom platform, transom steps, cockpit deck, stairway to flybridge, side decks, steps to foredeck, flybridge aft sun deck and foredeck seating walkthrough areas
- Reversible hydraulic anchor winches with foredeck and main helm controls
- Stemhead roller with manual anchor launch and retrieve
- Twin anchor system incorporating a primary anchor - 80kg galvanised Lewmar claw anchor with 100m of 14mm galvanised chain and a secondary anchor - 50kg galvanised Lewmar claw anchor with 70m of 14mm galvanised chain
- Twin electric stern line mooring winches
- Deck hatch access to chain locker, rope locker and engine room
- Freshwater deck/anchor wash (with both fore and aft deck outlets)
- Stainless steel bow and stern fairleads
- Stainless steel bow spring cleats (1 pair, port and starboard)

- Stainless steel stern spring cleats (1 pair, port and starboard)
- Stainless steel guard rails to foredecks
- Stainless steel flybridge handrails with glazed panel
- Stainless steel handrails to main deck side decks
- Foredeck escape hatch
- Foredeck U-shaped seating area with removable coffee table
- Drinks holders (12)
- Twin coach roof lockers for storage of fenders, ropes and cushions
- PVC rubbing band with stainless steel insert
- LED deck level lighting
- Full set of IMCO navigation lights
- Riding light
- Twin beam searchlight with remote controls
- Stern docking lights
- Twin electric horns
- Fuel and water fillers

COCKPIT AND BATHING PLATFORM

- Self-draining
- Upholstered U-shaped seating with storage below (for life-rafts)
- Teak folding dining table
- LED overhead and deck level lighting
- Stainless-steel handrails
- Stern docking (second) station controls portside including engine controls, follow on tiller, thruster controls and emergency engine stop
- Remote control 4.5m telescopic passerelle with automatic folding handrails (1.2m overhang)
- Watertight pantograph door giving access from bathing platform into crew area/engine room
- Engine room to cockpit escape hatch
- Stern lazarette and central transom locker with provision storage and charging for optional SEABOBs (2 max.) to accommodate F5/F5S/F5SR models.
- Wash basin with mixer tap to portside
- Starboard locker containing remote fuel cocks, manual bilge pump with valve chest and manual controls for automatic fire extinguishers

- Integral stairway to flybridge with teak step treads
- Twin transom gates leading to bathing platform
- Electro-hydraulic teak-laid raise/lower bathing platform (550kg SWL)
- Retractable bathing ladder (manual) in side of bathing platform
- Hot and cold transom shower
- 220/240v shore support inlet
- Canvas cockpit cover and table cover

HELM

- Enclosed pilot house (via sliding doors) with central leather upholstered seat with fore, aft adjustment
- L-shaped companion seating to port (with deployable side table) and optional navigator seat to starboard
- 2-stage sliding doors to fully enclose or open helm to sky lounge area
- Instrument console with LCD display incorporating engine instruments, optional CCTV linked to Böning screen, fuel gauges, alarms and rudder position indicator
- Helm position instrument and controls console including:

- power-assisted electro-hydraulic steering (SeaStar)
- adjustable steering wheel
- high-speed magnetic compass
- electronic engine controls
- bow thruster control
- anchor winch remote control
- colour radar (with scanner) and GPS/chart plotter (twin 15.6" displays)
- Single 15" Böning display
- autopilot
- speed and distance log
- echo sounder with alarm
- VHF with DSC R/T with intercom
- remote control dual searchlight
- horn button (to operate twin electric horns)
- audible and visual alarm for bilge pumps
- engine room fire extinguisher warning system
- Automatic fog horn with loudhailer
- Chart storage
- Drink holders
- Toughened glass screen (clear for night vision) with windscreen de-mist system
- Windscreen wipers with freshwater windscreen wash
- Exterior black mesh windscreen covers

- Bilge pump controls with visual pump running warnings
- 24v and 240v electrical control panel
- Riding light, helm and navigation light control switches
- Dimmable LED overhead/concealed lighting (24v) and night lighting with scene selection
- Watertight pantograph door giving direct access to starboard side foredeck walkthrough area
- Timber flooring (V groove planked)
- 220/240v outlets (1)
- USB charging points (2)

SKY LOUNGE

- Sofa and coffee table
- Naim Uniti Atom audio system with Focal 100 ICW6 speakers (2)
- Sideboard with fridge and storage
- Access stairway to main deck
- Stainless steel opening glass patio doors to aft deck area
- USB connection points (2)
- Dimmable LED overhead/concealed lighting (24v) with scene selection
- Tinted panoramic toughened side windows

- Glazed roof panels with powered blinds
- Manual roller blinds to all side windows
- Manual curtains to aft door, stowed to port
- Timber flooring (V groove planked) with rug inlay
- 220/240v outlets (1)
- USB charging points (2)

FLYBRIDGE AND FLYBRIDGE FOREDECK

- Flybridge foredeck with twin sunpads
- Flybridge aft deck area with twin L-shaped sofas and coffee tables (2). Port side sofa can be adjusted to face forward or aft.
- Dining table with chairs to accommodate 8 persons (10 for optional 5 cabin layout)
- Naim Uniti Atom audio system with waterproof JL Audio M6-650X-L speakers (2) to aft end of flybridge
- Clear view hatch to aft cockpit
- Access stairway to aft cockpit
- Stainless-steel handrails with glass balustrade to aft of flybridge deck
- Storage lockers port/starboard
- Aft wet bar unit with electric barbecue, sink and tap, waste bin and storage with solid surface counter top.

- LED overhead and deck level lighting
- Radar mast
- Twin matching whip aerials for VHF R/T and radio
- Covers to exterior furniture, (cockpit cover, cockpit table cover, flybridge table cover (includes zip in chair covers), flybridge wetbar cover (2), flybridge L-shaped sofa covers (2), flybridge coffee table covers (2), flybridge dining area sofa, flybridge forward sunpad covers (2), foredeck seating cover and foredeck coffee table cover)
- USB charging points (2)

SALOON

- Large L-shaped sofa to port with storage below
- Sofa to starboard with storage below
- Coffee table
- 55" 4K UHD LED TV on rise and fall.
- Naim Uniti Atom audio system with Focal 100 ICW6 speakers (2) and Focal Cub Evo subwoofer
- Servery unit with integrated drinks refrigerator
- Glasses storage sideboard
- Panoramic tinted toughened glass windows port and starboard

- Triple stainless-steel framed cockpit doors
- Access stairway to lower accommodation
- Access stairway to skylounge
- Dimmable LED overhead/concealed lighting (24v) with scene selection
- 220/240v outlets (2)
- USB charging points (4)
- Manual roller blinds to all outboard windows
- Manual curtains on wave track to aft patio doors, stowed to port
- Fitted carpet
- Onboard ethernet router and 4G/5G internet modem

GALLEY

- Granite/quartz counter top
- Open bar/servery layout with powered electric screen to fully enclose galley and sliding door
- Miele 4-zone induction hob
- Hob extractor
- Miele combination microwave/convection oven with grill
- 1.5-bowl stainless-steel sink with mixer tap
- Chopping board and storage
- Full height refrigerator/deep freezer
- Dishwasher

- Icemaker
- Waste bin
- Drawers and storage cupboards
- Manual roller blinds to window
- Pantograph door to starboard side deck
- Dimmable LED overhead and task lighting (24v)
- 220/240v outlets (4)
- Timber flooring (V groove planked)
- Access to deck saloon via sliding door
- Access to dining area via sliding door

DINING AREA

- Dining table with aft facing fixed seating and dining chairs (4)
- Upholstered leather sideboard unit with crockery, glassware and general storage
- Entertainment unit with Naim Uniti Atom audio system and Focal 100 ICW6 speakers (2)
- 220/240v power outlets (2)
- USB charging points (2)
- Dimmable LED overhead/concealed lighting (24v) with scene selection
- Full-height panoramic tinted toughened glass port window
- Opening porthole (2) (3 with optional main deck Owner's stateroom)

- Manual roller blinds to outboard and forward windows
- Fitted carpet

DAY HEAD

- Electric freshwater toilet
- Wash basin and counter top in thermoformed solid surface
- Storage cupboard
- Manual tension venetian blind
- Solid surface flooring

ACCOMMODATION

- All cabins and bathrooms feature opening portholes and air conditioning
- All cabins feature 220/240v power points
- All en-suites feature 240v shaver points

OWNER'S STATEROOM

- Large double bed with bedside tables and drawers below
- Dressing area with full length mirror, hanging, shelf and drawer storage
- Built-in safe
- Port side dressing table with integrated mirror, chair, storage drawers and cupboards

- Starboard side sofa with storage drawers to forward bulkhead
- 55" 4K UHD LED TV
- Naim Uniti Atom audio system with Focal 100 ICW6 speakers (2) and Focal Cub Evo subwoofer
- Panoramic windows including opening portholes
- Roman blinds to hull windows
- Dimmable LED overhead/concealed lighting (24v) with scene selection
- 220/240v outlets (2)
- USB charging points (4)
- Fitted carpet

EN-SUITE BATHROOM

- Twin washbasins and vanity top in thermoformed solid surface
- Mirror
- Storage lockers
- Electric freshwater toilet and option of separate bidet
- Shower compartment with automatic pump out
- Extractor fan
- Heated towel rail
- Window with opening porthole

- Manual tension venetian blind
- LED overhead and concealed lighting (24v)
- Bathroom accessories
- Solid surface flooring, with synthetic teak accents applied to feature shower bulkheads and shower floor

FORWARD STATEROOM

- Large double bed with bedside tables and drawers below
- Built-in safe
- Twin double wardrobes
- Port side dressing table with integrated mirror, stool and storage drawers
- 43" 4K UHD LED TV
- Naim Uniti Atom audio system with Focal 100 ICW6 speakers (2)
- Panoramic windows including opening portholes
- Roman blinds to hull windows
- Dimmable LED overhead/concealed lighting (24v) with scene selection
- 220/240v outlets (2)
- USB charging points (4)
- Fitted carpet

EN-SUITE BATHROOM

- Washbasin and vanity top in thermoformed solid surface
- Mirror
- Storage lockers
- Electric freshwater toilet
- Shower compartment with automatic pump out
- Extractor fan
- Window with opening porthole
- Manual tension venetian blind
- LED overhead and concealed lighting (24v)
- Bathroom accessories
- Solid surface flooring, with synthetic teak accents applied to feature shower bulkheads and shower floor

STARBOARD GUEST CABIN

- Double bed with drawers below
- Bedside table
- Dressing table with stool
- Wardrobe with shelves
- Mirror
- Storage lockers
- Window with opening portholes
- Roman blind
- Dimmable LED overhead/concealed lighting

(24v) with scene selection

- Individual berth lights
- 220/240v outlets (1)
- USB charging point (2)
- Fitted carpet

EN-SUITE BATHROOM

- Electric freshwater toilet
- Washbasin and vanity top in thermoformed solid surface
- Mirror
- Storage lockers
- Shower compartment with automatic pump out
- Extractor fan
- Window with opening porthole
- Manual tension venetian blind
- LED overhead and concealed lighting (24v)
- Bathroom accessories
- Solid surface flooring, with synthetic teak accents applied to feature shower bulkheads and shower floor

PORT GUEST CABIN

- Two single beds with drawers below
- Bedside table
- Wardrobe with shelves

- Mirror
- Storage lockers
- Window with opening portholes
- Roman blind
- Dimmable LED overhead/concealed lighting (24v) with scene selection
- Individual berth lights
- 220/240v outlets (1)
- USB charging point (2)
- Fitted carpet

EN-SUITE BATHROOM

- Electric freshwater toilet
- Washbasin and vanity top in thermoformed solid surface
- Mirror
- Storage lockers
- Shower compartment with automatic pump out
- Extractor fan
- Windows with opening portholes
- Manual tension venetian blind
- LED overhead and concealed lighting (24v)
- Bathroom accessories
- Solid surface flooring, with synthetic teak accents applied to feature shower bulkheads and shower floor

LOWER ACCOMMODATION LOBBY

- Linen cupboard below companionway stairs
- Top-loading storage unit outboard in window side liner
- Sideboard with mirror above
- Space for optional combination washer/dryer below companionway stairs
- LED overhead/concealed lighting (24v) with scene selection
- Fitted carpet
- Manual roller blind to window

CREW QUARTERS

- All lower crew furniture is in white laminate, with Koko White solid surface (satin finish) bathroom vanity unit tops and Koko White solid surface (satin finish) bathroom floors

CREW CABIN

- Twin single beds with storage below
- Wardrobe with shelf
- Mirror
- Storage lockers
- Opening porthole (2, port and aft) and venetian blinds
- LED overhead lighting (24v)

- Individual berth light
- 220/240v outlets (1)
- USB charging points (2)
- Non-slip safety flooring

STARBOARD CREW CABIN

- Single bed with storage below
- Wardrobe
- Mirror
- Storage locker
- Opening porthole and venetian blind
- LED overhead lighting (24v)
- Individual berth light
- 220/240v outlets (1)
- USB charging points (2)
- Non-slip safety flooring

CREW BATHROOM

- Electric freshwater toilet
- Washbasin with Koko white (satin finish) solid surface vanity top
- Mirror
- Storage lockers
- Shower compartment with automatic pump out
- Extractor fan
- LED overhead lighting (24v)

- Bathroom accessories
- Solid surface flooring in Koko white (satin finish)

CREW AREA

- Access from transom door
- Access to engine room
- Washing machine and separate tumble dryer (stacked)
- LED overhead lighting (24v)
- Non-slip safety flooring

POWER AND DRIVE SYSTEMS

- High volume air intakes
- Engine room extractor fan with electronic time delay
- Engine exhaust silencers and water-cooled exhausts
- Forward and aft engine room bulkheads and engine room deck head to be integrally bonded including insulation with acoustafoam layers
- Engines flexibly mounted
- Automatic fire extinguisher with remote override control
- Automatic and manual bilge pumps
- Propeller shafts in Marinemet

- 5-bladed propellers in nickel aluminium bronze
- High speed balanced rudders
- Cathodic protection for stern gear
- Stern gear, engines, fuel tank fillers, all electrically bonded
- LED engine room lighting
- Engine room access from transom (via crew) and cockpit deck hatch
- Power-assisted electro-hydraulic steering system
- Electronic engine and gear shift controls
- Bow thruster with dual-station controls (340kgF)
- Fresh water supply point in engine room
- Dripless self-aligning shaft seals

ELECTRICAL SYSTEMS

24 Volt:

- 4 x heavy duty batteries for engine starting
- 6 x heavy duty auxiliary batteries
- Battery link facility with remote control at helm position
- Both battery banks are charged using a voltage sensitive relay that parallels both battery banks when a charging source is present
- 1 x 100 amp charger, 1x 100 amp -3500W

charger/inverter and 1x 6 amp charger (for generator battery)

- Remote battery isolator control switches at main switch panel position
- Circuit breakers on all circuits
- 24v to 12v converters for certain navigation and radio circuits
- 24v to 240v/50Hz inverter for saloon A/V, galley fridge and optional telephone system
- Galvanic isolation system

220/240 Volt:

- European specification: Up to 2 x 28kW @ 50Hz diesel generators in own sound shields, water cooled and with specially silenced exhaust systems and with remote operation from main control panel (single generator as standard)
- USA specification: Up to 2 x 32kW @ 60Hz diesel generators in own sound shields, water cooled and with specially silenced exhaust systems and with remote operation from main control panel (single generator as standard)
- 220/240v shore power inlet (2 x 63 amp single phase)
- Shore power/generator change over control operated from main control panel

- Polarity check system
- Earth leakage safety trip, circuit breakers on all circuits
- Power points (240v) in all cabins and living areas, helm position and galley
- 240v shaver points in washrooms
- 3kW 2kW immersion heater for fresh water (2)

FUEL SYSTEM

- Main fuel tank with a total 7,000l litres of fuel capacity (8,800l if long range fuel tank is specified).
- Fuel fillers to port and starboard
- High capacity duplex fuel filters/water traps with integral changeover valves and water sensors connected to alarms at helm position
- Remote fuel isolation controls in cockpit locker for main engines and generators
- Fuel gauges at helm position

AIR CONDITIONING SYSTEM

- Air conditioning/heating reverse cycle 270,000 BTU fan capacity with 216,000 BTU chiller capacity suitable for temperatures to 40°C (tropical)
- Windscreen demist facility

- Outlets in all areas

WATER SYSTEM

- Fresh water tanks giving 1,500l capacity plus 205l hot water calorifier
- Automatic water pump with filter (80l/min)
- Water level gauge
- Deck filler
- Pump control at main helm station
- Electric freshwater toilet system linked to 540l holding tank, content gauge and low noise electric overboard discharge, with macerator backup system as well as dockside discharge system
- Optional grey water tank to take waste water from sinks/showers, washing machine(s) and dishwasher (Note: cannot be selected when optional extended range fuel tank is specified)

BILGE PUMPS

- Automatic/manual override electric bilge pumps in engine room, rudder area and forward accommodation
- High capacity manual bilge system with suction points in the same areas
- Electric bilge pumps have controls and warning

lights with audible alarm at helm position

FIRE EXTINGUISHERS

- Automatic engine room fire extinguisher system (with manual override) and warning system at helm position providing automatic shutdown of engines, generators and ventilation fans
- Hand operated fire extinguishers in all guest cabins, galley, crew quarters and flybridge

OTHER STANDARD EQUIPMENT

- Ensign staff
- Fenders (8)
- Mooring warps (4)
- First aid kit
- Set of towels (8 large, 8 hand) (10 for optional 5 cabin layout)
- Bed cover supplied to all cabins (except crew cabin)
- Complete set of Lucrezia crystal glassware (8 settings consisting of tumbler, highball and wine glasses) (10 settings for optional 5 cabin layout)
- Set of Sous Le Soleil crockery (8 settings consisting of plate, cake plate, dessert plate, bowl, cup and saucer) (10 settings with for

optional 5 cabin layout)

- Set of stainless steel cutlery (8 settings of David Mellor “Paris” cutlery 7 pieces) (10 settings for optional 5 cabin layout)
- Tool kit
- Boat hook
- Owner’s manual and engine manual
- Ship’s document case

extensive range

- Curtains, blinds or sunscreens to all windows and portholes (excludes helm and pantograph doors)
- Crew cabins have fitted carpet, Crew bathrooms have solid surface floors and countertops
- Non-slip safety flooring to crew mess and passageway

FINISHES

- Teak-laid decks to all external deck areas (including flybridge)
- Timber flooring (V grooved planked) to galley, skylounge and wheelhouse
- Furniture in choice of Alba Oak, Rovere Oak in satin finish as standard. Silver Oak or Walnut with satin or gloss finishes available as an option.
- Solid surface floors in all bathroom suites in guest accommodation (including day head)
- Thermoformed solid surface wash basin counter tops in all bathroom suites and day head
- Synthetic teak accents applied to bulkheads/ shower linings
- Galley counter top in granite or quartz
- Choice of high-quality carpets and fabrics from