

# Y CLASS







EXPERIENCE THE  
EXCEPTIONAL

Your yacht is an extension of yourself. A statement of your lifestyle. She needs to deliver unforgettable experiences for you, your family and friends. Every Princess yacht is designed with our forward-thinking mentality and crafted with meticulous attention to detail. So whether you're dashing across the water or moored in your favourite bay, you will recognise the difference our design and details make, inside and out.

Experience the exceptional.





## CRAFTED IN PLYMOUTH

Perched on the edge of the English Channel lies the city of Plymouth, where we established our home in 1965. Today Princess shipyards cover an area of over 1.1 million square feet, an area rich in British maritime heritage. In fact, South Yard, where our X Class Super Flybridge yachts are constructed, is a former naval yard dating back to the 17th century. From the outset, our goal has been to meticulously sculpt our yachts around our owners' enjoyment of them. Such dedication and attention to detail resonates deeply with our Plymouth craftspeople.

Over 3,000 people, each possessing a mastery of their skill, fastidiously realise this vision in our shipyards. Through a culture of innovation, our yachts are not only some of the most technically-advanced in the world but also the most beautifully realised.

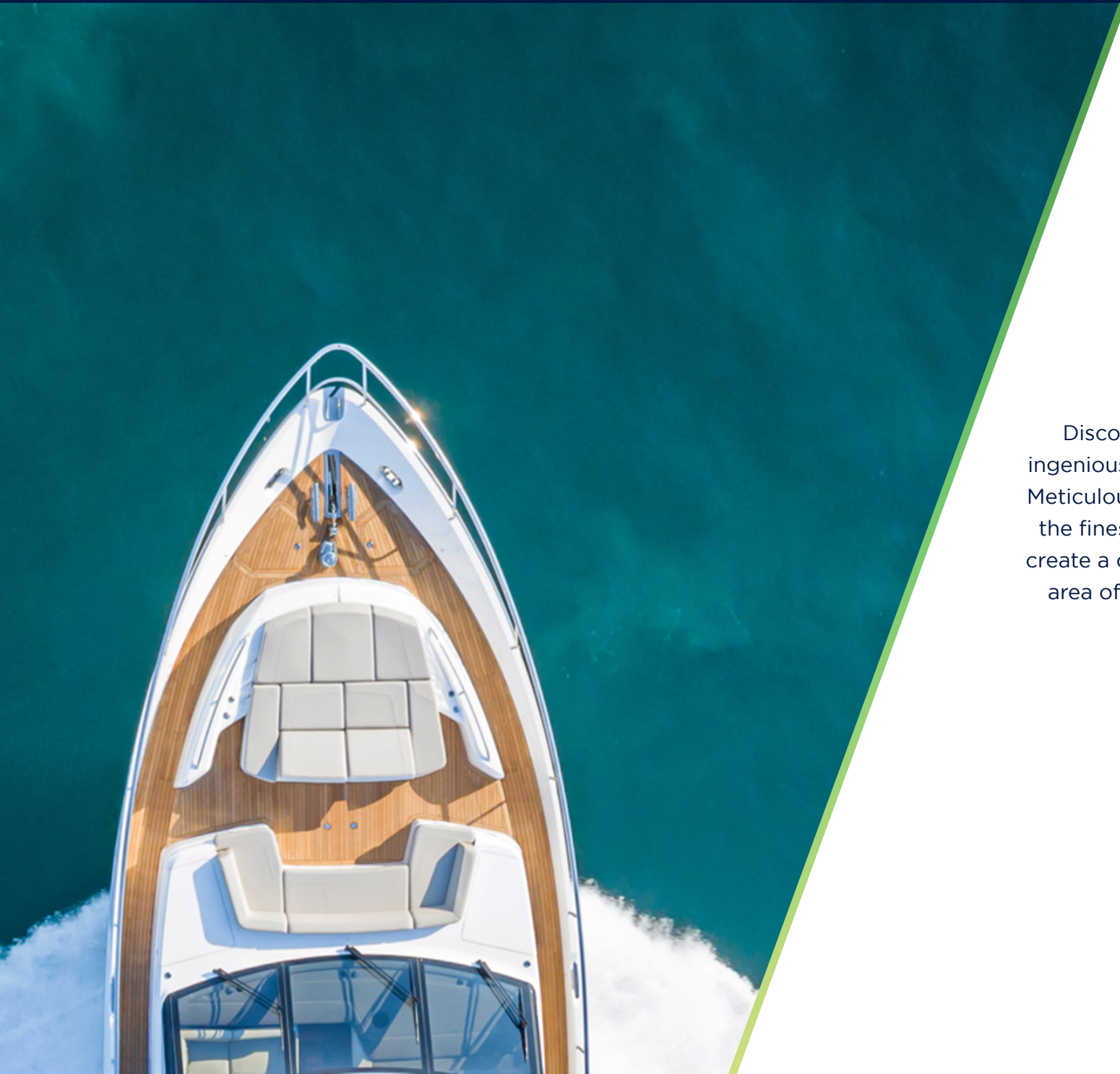


## THE EXPERIENCE OF PERSONALISATION

Every yacht in the Y Class range is unique. We start with an inspiring platform, combining luxury and performance, with a focus on meticulous detailing. It's then down to you to create your ultimate yacht with a variety of layout options and a fine selection of designed interiors with expert guidance from the Princess Design Studio. It is this journey that makes the Y class so enticing. A refined yacht that is ingenious by design, exciting to experience and personalised by you.







## Y CLASS

Discover a world of motor yachting that's ingeniously crafted to capture your imagination. Meticulously detailed surroundings finished with the finest materials, bathed in space and light, create a compelling conversation between every area of the boat. A sophisticated experience with the power to excite.



Y72

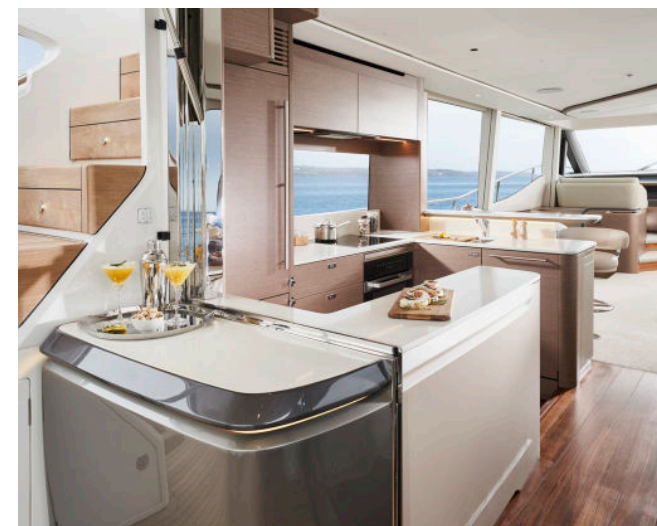




Finished to high standards throughout, the all-new Y72s design features are comparable to those of larger Y Class yachts. Her spacious saloon has a sociable layout with a bar area and open plan galley, complemented by a multi-zone Naim audio system.









Forward on the lower deck, six guests can enjoy three beautifully appointed guest cabins filled with light from the full-length hull glazing. A dedicated staircase leads from the main deck to the full-beam owner's stateroom amidships, via a private lobby area connected to the saloon. The sophisticated owner's stateroom is furnished with a sofa, dressing area and vanity desk wrapped and stitched in Livorno Stone leather for a contemporary finish. Luxurious surroundings exude from the owner's stateroom with architecturally inspired feature panels, fresh linen wallcoverings and a bronze tint mirror to compliment the scheme. An additional en-suite cabin with two single beds is positioned aft for crew or occasional guests.







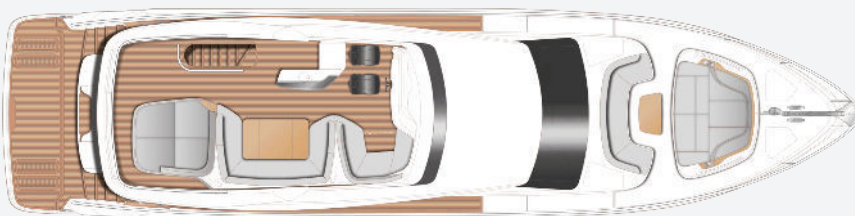




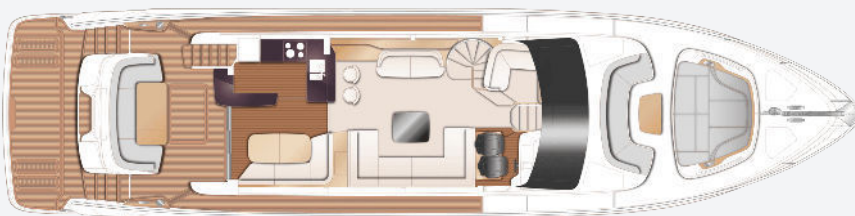




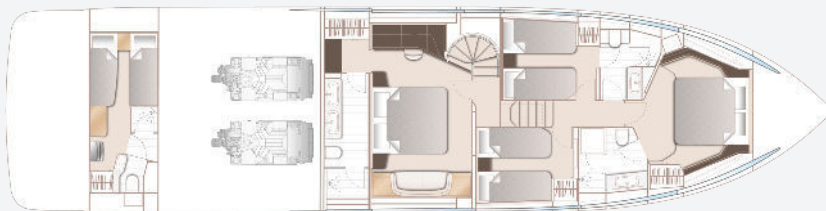
**Y72**  
SPECIFICATION



Y72 Flybridge



Y72 Main Deck



Y72 Lower Deck

## PRINCIPAL DIMENSIONS

<b>Length overall (incl. pulpit)</b>	74ft 9in (22.80m)
<b>Length overall (excl. pulpit)</b>	73ft 2in (22.31m)
<b>Beam</b>	17ft 11in (5.45m)
<b>Draft. (full load)</b>	5ft 8in (1.72m)
<b>Displacement (half load)</b>	53,300kg (117,506lbs)*
<b>Fuel capacity</b>	990 gal/1,189 US gal/4,500l
<b>Water capacity (excl. calorifier)</b>	184 gal/221 US gal/836l

## ENGINES

<b>Twin MAN V12 (2 x 1,650mhp)</b>	Speed range: 32-34 knots <sup>†</sup>
--	--



## FULL SPECIFICATION

---

### DECK FITTINGS

- Teak-laid transom platform, cockpit deck, flybridge, flybridge stairway and steps to side deck
- Reversible electric anchor winch with foredeck, main helm and flybridge controls
- Stemhead roller with automatic anchor launch and retrieve
- Self-stowing 50kg/110lbs Delta anchor with 60m of 12mm chain
- Twin electric sternline mooring winches
- Deck hatch access to chain locker
- Bow rope stowage locker
- Freshwater deck/anchor wash
- Stainless steel bow and stern fairleads
- Stainless steel bow, stern and spring cleats (2 pairs)
- Stainless steel pulpit and guard rails
- Stainless steel coachroof and flybridge handrails
- Foredeck escape hatch
- Foredeck U-shaped seating area
- Foredeck sunbathing area, integrated

adjustable headrests with aft facing seat conversion

- Twin coachroof lockers for storage of fenders, ropes and covers
- PVC rubbing band with stainless steel insert
- LED deck level lighting integrated into scene selection lighting control
- Illuminated crown logo on transom
- Full set of IMCO navigation lights
- Riding light
- Stern docking light (mounted on flybridge overhang)
- Twin beam searchlight with dual station remote controls
- Twin electric horns
- Loudhailer
- Fuel and water fillers

### COCKPIT AND BATHING PLATFORM

- Self-draining
- Upholstered U-shaped seating
- Folding teak dining table
- LED overhead and deck level lighting integrated

into scene selection lighting control

- Stainless steel handrails
- Pantograph door to aft crew cabin
- Lockable gas strut assisted hatch to engine room/lazarette
- Liferaft stowage locker
- Rope storage lockers
- Locker containing remote fuel cocks, manual bilge pump with valve chest and manual controls for automatic fire extinguishers
- Integral stairway to flybridge with teak step treads
- Twin transom gates leading to bathing platform
- Electro-hydraulic raise/lower teak laid bathing platform (450kg SWL)
- Retractable bathing ladder (manual) in side of hydraulic platform
- Swim platform transom seat in teak
- Transom steps to access stern from bathing platform when in lowered position
- Dinghy chock system (keyway plates and sliders fitted to bathing platform)
- Transom storage locker capable of storing 2 x

SEABOB with space to port side to facilitate SEABOB chargers

- Hot and cold transom shower
- 220/240v shore support inlet
- Cockpit canvas cover

### **FLYBRIDGE**

- Instrument console with dual station controls and LED display incorporating engine instruments, fuel gages, alarms and rudder position
- Power assisted electro hydraulic steering with adjustable wheel
- Twin helm seats with fore and aft adjustment for helmsman
- Starboard L-shaped seating (converts to sunpad)
- Large U-shaped upholstered seating
- Teak table with removable central section
- Wet-bar with barbecue, sink, drawer fridge, waste bin and storage
- Sunbed aft with storage below
- Naim Uniti Atom audio unit with JL Audio M6-650X-L waterproof speakers (2)
- Clear view hatch to aft cockpit
- Wind deflector screens

- Stainless steel handrails with glass balustrade and teak capping to aft end of flybridge
- LED deck level lighting integrated into scene selection lighting control
- GRP radar arch
- Twin matching whip aerials for VHF R/T and radio
- Console, table and seat covers
- Optional extended GRP hardtop with/without electric tilting louvered section or with fixed glass panel
- USB charging points (2)

### **HELM POSITION**

- Twin leather helm seats with fore and aft adjustment for helmsman
- Instrument console with LED display incorporating engine instruments, fuel gauges, alarms and rudder position indicator
- Dual station instruments and controls at Flybridge and Lower Helm Positions:
  - power-assisted electro-hydraulic steering
  - adjustable steering wheel
  - high-speed magnetic compass
  - electronic engine controls
  - Bow thruster control

- electric anchor winch remote control
- colour radar (with scanner) and GPS/chartplotter
- autopilot
- speed and distance log
- echo sounder with alarm
- VHF with DSC R/T with intercom
- remote control searchlight
- horn button
- controls for standard trim tabs
- Bönig system integrated with the following functionalities (displayed on separate dedicated display at helm):
  - Engine instrumentation (including fuel levels and fuel flow)
  - Digital boat alarms
  - Scene selection lighting controls
  - AC/DC control and monitoring
- Drinks holders
- Toughened glass screen (clear for night vision) with windscreen demist system
- Windscreen wipers with freshwater windscreen wash
- Black mesh windscreen covers
- Bilge pump controls with visual pump running warnings



- 24v and 240v electrical control panel
- Riding light, helm and navigation light control switches
- USB charging point
- LED overhead lighting (24v) and night lighting integrated into scene selection lighting control
- Pantograph helmsman's door to starboard side deck
- Timber flooring (V groove planked)

#### **SALOON**

- U-shaped sofa to starboard
- Coffee table
- Sofa to port
- L-shaped sofa opposite helm area
- Sideboard unit with bottle and glass storage
- Refrigerator
- 55" UHD LED TV on rise and fall
- Naim audio system paired with speakers (2) and subwoofer
- Electric drop window to port
- Manual tension venetian blinds to all windows
- Dimmable LED overhead and concealed lighting (24v) integrated into scene selection lighting control
- Access stairway to lower accommodation

- Separate access stairway to owner's stateroom
- Fitted carpet

#### **DINING AREA**

- L-shaped sofa
- Folding dining table
- Occasional dining table stools (2)
- Stainless steel framed sliding bi-fold door to cockpit with integrated hinging window aft of galley
- Venetian blinds to windows and pleated blinds to doors
- Dimmable LED overhead and concealed lighting (24v) integrated into scene selection lighting control
- Timber flooring (V groove planked)

#### **GALLEY**

- Galley worktop in choice of quartz
- Bar top to saloon area
- 4-zone ceramic induction hob
- Extractor fan
- Combination microwave/convection oven with grill
- Twin-bowl stainless steel sink with mixer tap
- Chopping board

- Full height refrigerator/deep freeze
- Dishwasher
- Icemaker
- Waste bin
- Drawers and storage cupboards
- Manual tension venetian blinds to window
- LED overhead and task lighting (24v) integrated into scene selection lighting control
- 220/240v outlets (4)
- Timber flooring (V groove planked)

#### **ACCOMMODATION**

- All cabins and bathrooms feature opening portholes and air conditioning
- All cabins feature 220/240v power points
- All bathrooms feature electric freshwater toilets and 240v shaver points

#### **OWNER'S STATEROOM LOBBY**

- Access stairway to owner's stateroom
- Panoramic window
- Manual tension venetian blind
- Washer/dryer with cupboard above fitted in the forward passageway in the guest accommodation (a separate washer and dryer may be optionally installed in place of the

standard unit)

- LED overhead and concealed lighting (24v) integrated into scene selection lighting control
- Fitted carpet

### **OWNER'S STATEROOM**

- Large double bed with drawers below
- Twin bedside tables
- Dressing area with wardrobes and storage
- Built-in safe
- Dressing table with stool
- Mirror
- Sofa
- Storage lockers and drawers
- 50" UHD LED TV
- Naim audio system paired with speakers (2) and subwoofer
- Panoramic windows including opening portholes
- Manual tension venetian blinds to
- Dimmable LED overhead and concealed lighting (24v) integrated into scene selection lighting control
- Individual berth lights
- 220/240v outlets (2)
- USB charging point

- Fitted carpet

### **EN-SUITE BATHROOM**

- Twin washbasins and worktop in thermoformed solid surface
- Mirror
- Storage lockers
- Shower compartment with automatic pump out
- Extractor fan
- Window with opening porthole
- Manual tension venetian blind
- LED overhead and concealed lighting (24v) integrated into scene selection lighting control
- Bathroom accessories
- Solid surface flooring

### **FORWARD STATEROOM**

- Large double bed with drawers below
- Wardrobe with shelves
- Dressing table
- Mirror
- Storage lockers and drawers
- Window with opening portholes
- Manual tension venetian blind
- Deck hatch
- LED overhead and concealed lighting (24v)

integrated into scene selection lighting control

- Individual berth lights
- 220/240v outlets (4)
- USB charging point
- Fitted carpet

### **EN-SUITE BATHROOM**

- Washbasin and worktop in thermoformed solid surface
- Mirror
- Storage lockers
- Shower compartment with automatic pump out
- Extractor fan
- Window with opening portholes
- Manual tension venetian blind
- LED overhead and concealed lighting (24v) integrated into scene selection lighting control
- Bathroom accessories
- Solid surface flooring

### **PORT AND STARBOARD GUEST CABINS**

- Two single beds with drawers below (with option of double bed conversion)
- Bedside table
- Wardrobe with shelves
- Mirror



- Storage lockers and drawers
- Window with opening portholes
- Manual tension venetian blinds
- LED overhead and concealed lighting (24v) integrated into scene selection lighting control
- Individual berth lights
- 220/240v outlets (2)
- USB charging point
- Fitted carpet

#### **EN-SUITE BATHROOM**

- Washbasin and worktop in thermoformed solid surface
- Mirror
- Storage lockers
- Shower compartment with automatic pump out
- Extractor fan
- Window with opening porthole
- Manual tension venetian blind
- LED overhead and concealed lighting (24v) integrated into scene selection lighting control
- Bathroom accessories
- Solid surface flooring
- Day access door from passageway

#### **CREW CABIN**

- Two single beds with storage below
- Bedside table
- Wardrobe with shelf
- Mirror
- Storage lockers and drawers
- Transom window with venetian blind
- Opening portlight
- LED overhead lighting (24v)
- Individual berth lights
- 220/240v outlets (2)
- USB charging point
- Standard aft lazarette incorporates overhead lighting, transom window, access hatch with ladder and storage space
- Access to engine room via door

#### **EN-SUITE BATHROOM**

- Washbasin with solid surface worktop
- Mirror
- Storage lockers
- Shower compartment with automatic pump out
- Extractor fan
- LED overhead lighting (24v)
- Bathroom accessories
- Non-slip flooring

#### **POWER AND DRIVE SYSTEMS**

- Engine room soundproofed
- High volume air intakes
- Engine room extractor fan with electronic time delay
- Engine exhaust silencers and water-cooled exhausts
- Engine beds integrally moulded with hull for strength and vibration absorption
- Forward and aft engine room bulkheads integrally bonded
- Engines flexibly mounted
- Automatic fire extinguisher with remote override control
- Automatic and manual bilge pumps
- Propeller shafts in Marinemet
- 5-bladed propellers in nickel aluminium bronze
- High speed balanced rudders
- Cathodic protection for sterngear
- Sterngear, engines, fuel tanks etc all electrically bonded
- Bow thruster (250kgf/551lbf) with dual-station controls
- Engine room lighting
- Engine room access hatch and ladder
- Engine room door to crew area (via crew head)

- Power-assisted electro-hydraulic steering system
- Electronic engine and gear shift controls
- Fresh water supply point in engine room
- Dripless self-aligning shaft seals

## **ELECTRICAL SYSTEMS**

24 Volt:

- 4 x heavy-duty batteries for engine starting
- 6 x heavy-duty auxiliary batteries
- Battery link facility with remote control at helm position
- Both battery banks are charged using a voltage sensitive relay that parallels both battery banks when a charging source is present
- 1 x 60-amp 24v battery charger and 1x combination 2.6 kW 60-amp inverter charger
- Remote battery master switches with control switch at main switch panel
- Circuit breakers on all circuits
- 12v voltage dropper for certain navigation and radio circuits

220/240 Volt:

- 22.5kW generator in own sound shield with water-cooled and specially silenced exhaust

- Automatic fire extinguisher
- 63-amp shore support inlet
- Generator/shore support change-over switch
- Polarity check system
- Earth leakage safety trip
- Circuit breakers on all circuits
- Power points (240v) in: owner's stateroom, guest cabins, galley and saloon area
- Shaver points in all bathrooms
- Smoke detectors (galley, stateroom, lower lobby and crew area)
- Böning system

## **AIR CONDITIONING**

- Air conditioning/heating reverse cycle 128,000 BTU chiller with 128,000 BTU fan capacity suitable for ambient temperature to 40°C (e.g. Tropical)
- Controls in all cabins and outlets in all areas (includes outlets in bathrooms and crew cabin)
- Standard 22.5kW generator is suitable (this has sufficient capacity for Gyro stabilisers as well as air conditioning)

## **FUEL SYSTEM**

- Fuel tanks (in NS8 marine grade alloy) with

interconnection system giving 990 gal / 1,189 US gal / 4,500l capacity

- Fuel fillers on port and starboard side decks
- High-capacity duplex fuel filters with water traps and change-over valves, water warning sensors connected to warning lights at lower helm
- Remote fuel cocks in cockpit locker
- Fuel gauges at main helm console

## **WATER SYSTEM**

- Water tanks totalling 184 gal / 221 US gal / 836l plus 16 gal / 19 US gal / 73l hot water calorifier
- Water heated by engines and 240v immersion heater
- Automatic water pump with filter
- Main circuit breaker at switch panel
- Water level gauge
- Deck filler
- Electric freshwater toilet system with 88 gal / 106 US gal / 400l holding tank, content gauge and low noise electric overboard discharge, with macerator backup system as well as dockside discharge system

## **FIRE EXTINGUISHERS**



- Automatic/manual override fire extinguishers in engine room
- Hand operated fire extinguishers (7) in owner's stateroom, forward stateroom, port and starboard guest cabins, galley, lower helm position and aft cabin

### **BILGE PUMPS**

- Automatic/manual override electric bilge pumps in engine room (2), rudder area and forward accommodation (6 in all)
- High-capacity manual bilge pump with valve system and suction points in same areas
- Electric bilge pumps have controls and warning lights at main helm and warning light with audible alarm at flybridge helm

### **OTHER STANDARD EQUIPMENT**

- Ensign staff
- Fenders (8)
- Mooring warps (4)
- Boat hook
- First-aid kit
- Tool kit
- Owner's manual and engine manual
- Bed cover supplied to all cabins (except

- optional crew cabin)
- Set of towels (8 large, 8 hand)
- Set of crystal glassware (8 settings consisting of tumbler and wine glasses)
- Set of Princess china (8 settings)
- Set of cutlery (8 settings of David Mellor "Paris" cutlery 7 pieces)
- Ship's document case
- Anchor winch back up handle

### **FINISHES**

- Teak-laid decks to transom platform, steps to flybridge and flybridge
- Timber floor (V groove planked) to galley, dining area and helm
- Furniture in choice of Rovere Oak or Alba Oak in satin finish. Silver Oak or Walnut in satin or gloss finishes available as an option
- Solid surface floors in all bathroom suites
- Thermoformed solid surface wash basin counter tops in all bathroom suites
- Galley worktop in quartz
- Choice of high-quality carpet and upholstery fabric from extensive range
- Blinds or sunscreens to all windows, doors and portholes

- Crew cabin has boat timber furnishings and timber flooring, crew bathroom floor is solid surface with solid surface countertops