

# Y CLASS







EXPERIENCE THE  
EXCEPTIONAL

Your yacht is an extension of yourself. A statement of your lifestyle. She needs to deliver unforgettable experiences for you, your family and friends. Every Princess yacht is designed with our forward-thinking mentality and crafted with meticulous attention to detail. So whether you're dashing across the water or moored in your favourite bay, you will recognise the difference our design and details make, inside and out.

Experience the exceptional.





## CRAFTED IN PLYMOUTH

Perched on the edge of the English Channel lies the city of Plymouth, where we established our home in 1965. Today Princess shipyards cover an area of over 1.1 million square feet, an area rich in British maritime heritage. In fact, South Yard, where our X Class Super Flybridge yachts are constructed, is a former naval yard dating back to the 17th century. From the outset, our goal has been to meticulously sculpt our yachts around our owners' enjoyment of them. Such dedication and attention to detail resonates deeply with our Plymouth craftspeople.

Over 3,000 people, each possessing a mastery of their skill, fastidiously realise this vision in our shipyards. Through a culture of innovation, our yachts are not only some of the most technically-advanced in the world but also the most beautifully realised.

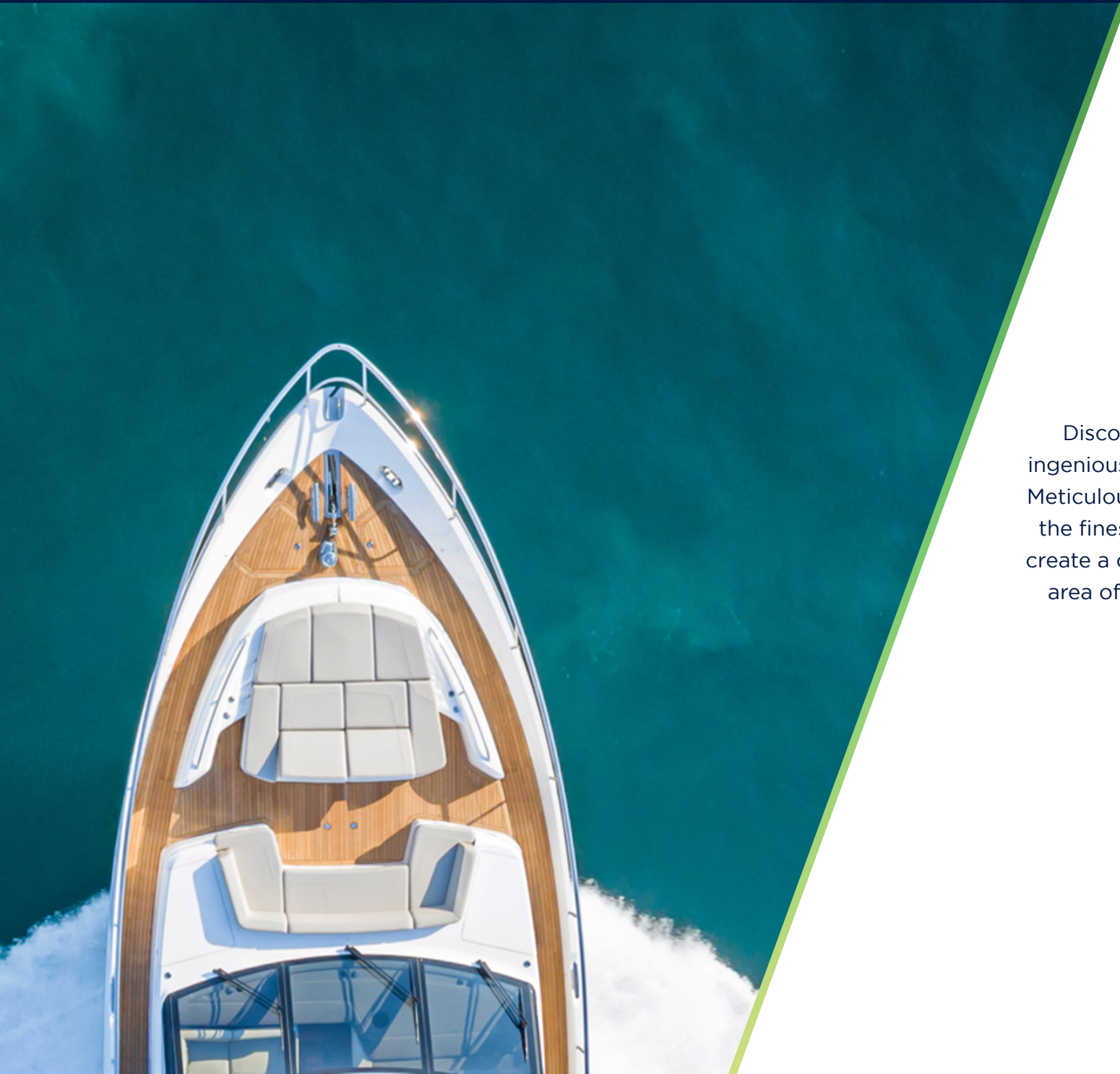


## THE EXPERIENCE OF PERSONALISATION

Every yacht in the Y Class range is unique. We start with an inspiring platform, combining luxury and performance, with a focus on meticulous detailing. It's then down to you to create your ultimate yacht with a variety of layout options and a fine selection of designed interiors with expert guidance from the Princess Design Studio. It is this journey that makes the Y class so enticing. A refined yacht that is ingenious by design, exciting to experience and personalised by you.







## Y CLASS

Discover a world of motor yachting that's ingeniously crafted to capture your imagination. Meticulously detailed surroundings finished with the finest materials, bathed in space and light, create a compelling conversation between every area of the boat. A sophisticated experience with the power to excite.



Y 85





The new Y85 is classically Princess. The refined full length hull glazing compliments the latest Y Class styling, encompassing an interior sanctuary within. Organic, elegant forms frequent each area of the yacht, illustrating the unique capabilities of our craftspeople.

The elongated main deck offers ample entertaining spaces, from the large aft cockpit area available in a range of configurations including a central cockpit table or convertible seating arrangement, through to the saloon's circular dining area to seat eight guests. The flexible galley arrangement allows for the utmost privacy for guests with the crew able to move discretely around the yacht.









Below, four cabins are flooded with light from the sweeping full length hull glazing, showcasing the luxurious materials and fixtures selected by the Princess Design Studio.

With twin MAN V12 engines propelling her to a top speed of up to 31 knots, the Y85 cruises past fellow contemporaries without looking back. Unmissable, the new Y85 is unmistakably Princess.









TAKE A VIRTUAL TOUR OF THE Y85





EXPERIENCE THE Y85

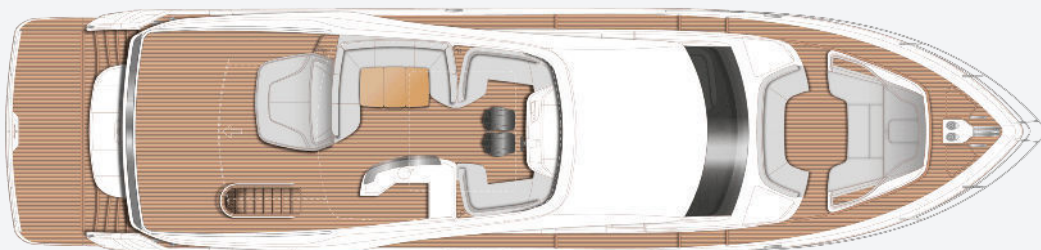






## Y85 SPECIFICATION

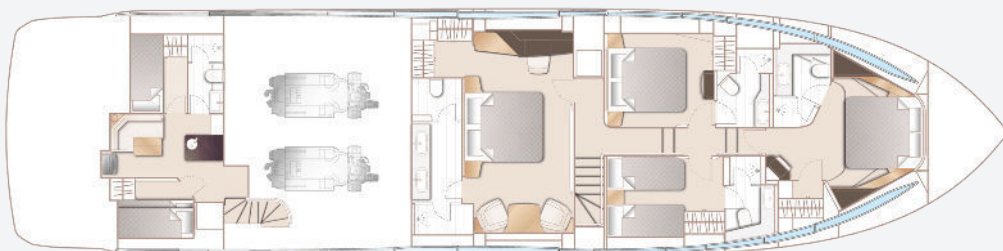




Y85 Flybridge



Y85 Main Deck



Y85 Lower Deck

#### PRINCIPAL DIMENSIONS

<b>Length overall (incl. pulpit)</b>	86ft 0in (26.2m)
<b>Length overall (excl. pulpit)</b>	84ft 6in (25.75m)
<b>Beam</b>	20ft 8in (6.03m)
<b>Draft (full load)</b>	6ft 2in (1.89m)
<b>Displacement (half load)</b>	75,972kg (167,490lbs)*
<b>Fuel capacity</b>	2,406 gal/2,890 US gal/10,940l
<b>Water capacity (excl. calorifier)</b>	285 gal/342 US gal/1,295l

#### ENGINES

<b>Twin MAN V12 (2 x 1,900mhp)</b>	Speed range: 29-31 knots†
--	------------------------------



## FULL SPECIFICATION

---

### DECK FITTINGS

- Teak-laid transom platform, cockpit deck, flybridge, flybridge stairway, side decks and foredeck walkthrough
- Reversible hydraulic anchor winches with foredeck, main helm and flybridge controls
- Stemhead roller with manual anchor launch and retrieve
- Twin anchor system incorporating a primary 80kg galvanised claw anchor with 100m of 14mm galvanised chain and a secondary 50kg Galvanised Claw anchor with 70m of 14mm galvanised chain
- Twin electric sternline mooring winches
- Deck hatch access to chain locker
- Bow rope stowage locker
- Freshwater deck/anchor wash (with both fore and aft deck outlets)
- Stainless steel bow and stern fairleads
- Stainless steel bow, stern and spring cleats (2 pairs)
- Stainless steel pulpit and guard rails
- Stainless steel coachroof and flybridge

### handrails

- Foredeck escape hatch
- Foredeck U-shaped seating area
- Foredeck sunbathing area with integrated adjustable teak headrests and storage
- Twin coachroof lockers for storage of fenders, ropes and cushions
- PVC rubbing band with stainless steel insert
- LED deck level lighting
- Full set of IMCO navigation lights
- Riding light
- Twin beam searchlight with dual station remote controls
- Loudhailer
- Stern docking lights
- Twin electric horn
- Fuel and water fillers

### AFT COCKPIT AND BATHING PLATFORM

- Self-draining
- Upholstered U-shaped seating
- Folding teak table
- LED overhead and deck level lighting

- Stainless steel handrails
- Remote control 4.4m telescopic passerelle with folding handrails
- Watertight pantograph doors giving direct access from starboard side deck and transom to crew cabin /engine room
- Rope storage lockers
- Locker containing remote fuel cocks, manual bilge pump with valve chest and manual controls for automatic fire extinguishers
- Integral stairway to flybridge with teak step treads
- Twin transom gates leading to bathing platform
- Electro-hydraulic raise/lower teak laid bathing platform (550kg SWL)
- Retractable bathing ladder (manual) in side of hydraulic platform
- Transom access to lazarette
- Transom steps to access stern from bathing platform when in lowered position
- Keyway plates and sliders to enable later fitting of dinghy chocks
- Hot and cold transom shower



- 220/240v shore support inlets
- Cockpit canvas cover

#### WHEELHOUSE

- Leather upholstered new style helm seats with electric fore and aft adjustment for helmsman
- Leather upholstered navigator's seat with manual fore and aft adjustment
- U-shaped seating area to port with table
- Instrument console with LED display incorporating engine instruments, fuel gauges, alarms and rudder position indicator
- Dual station instruments and controls at Flybridge and Lower Helm Positions:
  - power-assisted electro-hydraulic steering
  - adjustable steering wheel
  - high-speed magnetic compass
  - electronic engine controls
  - trim tab controls with indicators
  - bow thruster control
  - hydraulic anchor winch remote control
  - colour radar (with scanner) and GPS/chartploter (twin displays at lower helm)
  - autopilot
  - speed and distance log
  - echo sounder with alarm

- VHF with DSC R/T with intercom
- remote control searchlight
- horn button
- Intercom to flybridge (through VHF handset)
- Automatic fog horn with loudhailer
- Chart storage
- Drinks holders
- Toughened glass screen (clear for night vision) with windscreen de-mist system
- Windscreen wipers with freshwater windscreen wash
- Black mesh sunscreens
- Bilge pump controls with visual pump running warnings
- 24v and 240v electrical control panel
- Riding light, helm and navigation light control switches
- USB charging points (2)
- LED overhead lighting (24v) and night lighting
- Pantograph helmsman's door to starboard side deck
- Electric drop window to port
- Timber flooring (V groove planked)

#### FLYBRIDGE

- Instrument consoles with dual station controls

and LED display incorporating engine instruments, fuel gauges, alarms and rudder position indicator

- Helm position with hydraulically raised instrument console
- Power assisted electro-hydraulic steering with adjustable wheel
- Audible and visual alarm for bilge pumps
- Engine room fire extinguisher warning system
- Twin adjustable new style helm seats
- Port and starboard forward-facing L shaped seating
- Large U-shaped upholstered seating
- Wetbar with double barbecue, sink, drawer refrigerator, waste bin and storage
- Sunbed aft with storage below
- Naim Uniti Atom audio system with waterproof speakers (2)
- Clear view hatch to aft cockpit
- Wind deflector screens
- Stainless steel handrails with glass balustrade and teak capping to aft end of flybridge
- Liferaft stowage
- LED deck level lighting
- GRP radar arch
- Twin matching whip aerials for VHF R/T and



radio

- Console and seat covers
- Optional crane (550kg SWL)
- Optional GRP hardtop with/without electric rotating louvered opening section or glass panels (or optional folding bimini with electro-hydraulic operation)

#### DECK SALOON

- Twin L-shaped sofas to port with storage below
- Coffee table
- Bruton pouf
- Two-seater sofa to starboard
- Storage units
- TV on rise and fall (55")
- Naim Uniti Atom audio system with ceiling mounted speakers (4)
- Triple stainless steel framed sliding door to aft cockpit
- Electric roller sheer blinds to outboard windows
- Manual curtains on wave track to doors
- LED overhead and concealed lighting (24v)
- 220/240v outlets (4)
- USB charging points (2)
- Fitted carpet

#### DINING AREA

- Expandable dining table
- Dining chairs (8)
- Bookcase on starboard side
- Furniture unit with bottle and glass storage on port side
- Refrigerator
- Full height panoramic window
- Electric roller sheer blinds to forward starboard window
- Manual curtains on wave track to panoramic window
- LED overhead and concealed lighting (24v)
- Stairway to lower accommodation
- Fitted carpet

#### GALLEY

- Galley unit counter tops in choice of granite or quartz
- Open bar/servery layout with powered electric screen to fully enclose galley and sliding door
- 4-zone induction hob
- Extractor fan
- Combination microwave/convection oven with grill
- Twin-bowl stainless steel sink with mixer tap

- Chopping board
- Full height refrigerator/deep freezer
- Dishwasher
- Icemaker
- Waste bin
- Drawers and storage cupboards
- Electric roller blinds to window
- Pantograph door to port side deck
- LED overhead and task lighting (24v)
- 220/240v outlets (4)
- Timber flooring (V groove planked)

#### DAY HEAD

- Electric freshwater toilet
- Wash hand basin and vanity top in thermoformed solid surface
- Storage cupboard
- Manual tension venetian blind
- Marble/granite/quartz floor

#### ACCOMODATION

- All cabins and bathrooms feature opening portholes (except port bathroom) and air conditioning outlets
- All cabins feature 220/240v power points
- All en-suites feature 240v shaver points



#### OWNER'S STATEROOM LOBBY

- Storage space for optional washer/dryer or wine cooler
- LED overhead and concealed lighting (24v)
- Fitted carpet

#### OWNER'S STATEROOM

- Large double bed with drawers below
- Twin bedside tables
- Dressing area with wardrobes and storage
- Built in safe
- Dressing table with chair (doubles as additional dining chair) to port
- Mirror
- Occasional table with seats fore and aft to starboard
- Storage lockers and drawers
- TV (55")
- Naim Uniti Atom audio system with speakers (2) and subwoofer
- Electric roman blinds and manual sheer roller blinds to hull windows
- Panoramic windows including opening portholes
- LED overhead and concealed lighting (24v)
- Individual berth lights

- 220/240v outlets (6)
- USB charging points (2)
- Fitted carpet

#### EN-SUITE BATHROOM

- Twin wash basins and vanity top in thermoformed solid surface
- Mirror
- Storage lockers
- Separate compartment with toilet and option of bidet
- Shower compartment with automatic pump out
- Extractor fan
- Heated towel rail
- Window with opening porthole
- Manual tension venetian blind
- LED overhead and concealed lighting (24v)
- Bathroom accessories
- Marble/granite /quartz to floor and specified bulkheads

#### FORWARD STATEROOM

- Large double bed with drawers below
- Walk-in wardrobe with shelves
- Dressing table with stool
- Mirror

- Storage lockers
- TV (32")
- Naim Uniti Atom sound system, paired with ceiling mounted speakers (2)
- Windows with opening portholes with electric roman blinds
- Deck hatch
- LED overhead and concealed lighting (24v)
- Individual berth lights
- 220/240v outlets (2)
- USB charging points (2)
- Fitted carpet

#### EN-SUITE BATHROOM

- Wash basin and vanity top in thermoformed solid surface
- Mirror
- Storage lockers
- Shower compartment with automatic pump out
- Extractor fan
- Window with opening porthole
- Manual tension venetian blind
- LED overhead and concealed lighting (24v)
- Bathroom accessories
- Marble/granite/quartz flooring and specified bulkhead



#### STARBOARD GUEST CABIN

- Two single beds with drawers below (with option of double bed conversion)
- Bedside table
- Wardrobe with shelves
- Mirror
- Storage lockers
- Window with opening portholes
- Electric roman blinds
- LED overhead and concealed lighting (24v)
- Individual berth lights
- 220/240v outlets (2)
- USB charging points (2)
- Fitted carpet

#### EN-SUITE BATHROOM

- Wash basin and vanity top in thermoformed solid surface
- Mirror
- Storage lockers
- Shower compartment with automatic pump out
- Extractor fan
- Window with opening porthole
- Manual tension venetian blind
- LED overhead and concealed lighting (24v)
- Bathroom accessories

- Marble/granite/quartz flooring

#### PORT GUEST CABIN

- Large double bed with drawers
- Twin bedside tables
- Dressing table with stool
- Wardrobe with shelves
- Mirror
- Storage lockers
- Window with opening portholes
- Electric roman blinds
- LED overhead and concealed lighting (24v)
- Individual berth lights
- 220/240v outlets (2)
- USB charging points (2)
- Fitted carpet

#### EN-SUITE BATHROOM

- Wash basin and vanity top in thermoformed solid surface
- Mirror
- Storage lockers
- Shower compartment with automatic pump out
- Extractor fan
- Window with opening porthole
- Manual tension venetian blind

- LED overhead and concealed lighting (24v)
- Bathroom accessories
- Marble/granite/quartz flooring

#### CREW QUARTERS

- All lower deck crew furniture is in white laminate finish, with white solid surface bathroom unit vanity tops and bathroom floors

#### CAPTAIN'S CABIN

- Single bed with storage below (option of additional berth above)
- Wardrobe with shelf
- Mirror
- Storage lockers
- Opening porthole and venetian blind
- LED overhead lighting (24v)
- Individual berth light
- 220/240v outlets (2)
- USB charging points (2)
- Fitted carpet

#### CREW CABIN

- Two single beds with storage below
- Wardrobe with shelf
- Mirror

- Storage lockers
- Opening porthole and venetian blind
- LED overhead lighting (24v)
- Individual berth light
- 220/240v outlets (2)
- USB charging points (2)
- Fitted carpet

#### CREW BATHROOM

- Wash basin with solid surface vanity top
- Mirror
- Storage lockers
- Shower compartment with automatic pump out
- Extractor fan
- LED overhead lighting (24v)
- Bathroom accessories
- Solid Surface flooring

#### UTILITY/CREW AREA

- Access from transom door and starboard side deck
- Access to engine room
- Storage space, cupboards and lockers
- Dinette sofa with folding table
- Crew mess with microwave, sink, refrigerator and waste bin

- Solid surface counter top
- Washing machine and separate tumble dryer
- LED overhead lighting (24v)
- Non-slip safety flooring

#### POWER AND DRIVE SYSTEMS

- Engine room soundproofed
- High volume air intakes
- Engine room extractor fan with electronic time delay
- Engine exhaust silencers and water-cooled exhausts
- Engine beds integrally moulded with hull for strength and vibration absorption
- Forward and aft engine room bulkheads integrally bonded
- Engines flexibly mounted
- Automatic fire extinguisher with remote override control
- Automatic and manual bilge pumps
- Propeller shafts in Marinemet
- 5-bladed propellers in nickel aluminium bronze
- High speed balanced rudders
- Cathodic protection for sterngear
- Sterngear, engines, fuel tank fillers all electrically bonded

- Engine room lighting
- Engine room access from crew area and from starboard side deck and transom via crew area
- Power-assisted electro-hydraulic steering system
- Trim tabs with indicators
- Electronic engine and gear shift controls
- Bow thruster (340 kgF/749 lbF) with dual-station controls
- Fresh water supply point in engine room
- Dripless self-aligning shaft seals

#### ELECTRICAL SYSTEMS

##### 24 Volt:

- 4 x heavy-duty batteries for engine starting and windlass operation
- 6 x heavy-duty auxiliary batteries
- Battery link facility with remote control at helm position
- Both battery banks are charged using a voltage sensitive relay that parallels both battery banks when a charging source is present
- 1x 80-amp 24v battery chargers and 1x combination 3.5kW inverter/100-amp charger and 1x 25-amp charger (for generator battery)
- Remote battery master switches with control



- switch at main switch panel
- Circuit breakers on all circuits
- 24v to 12v voltage dropper for certain navigation and radio circuits

#### 220/240 Volt:

- 27kW generator in own sound shield with water-cooled and specially silenced exhaust
- 2 x 63-amp shore support inlet
- Generator/shore support change-over switch
- Polarity check system
- Earth leakage safety trip
- Circuit breakers on all circuits
- Power points (240v) in: owner's stateroom, guest cabins, galley and saloon area
- Shaver points in all bathrooms

#### FUEL SYSTEM

- Total fuel capacity is 2,406 gal/2,890 US gal/ 10,940l comprising 8,040l main tank and 2 x 1,450l day tanks
- Fuel polishing transfer system to day tanks with water and vacuum sensors connected to alarms at both helms
- Fuel fillers to port and starboard
- High-capacity duplex fuel filters/water traps

- with integral changeover valves and water sensors connected to alarms at both helm positions
- Remote fuel isolation controls in cockpit locker for main engines and generators
- Dual station fuel gauges on helm consoles with additional back up mechanical sight gauge fitted to all tanks and mounted in engine room

#### WATER SYSTEM

- Water tanks totalling 285 gal/343 US gal/1,295l plus 45 gal/54 US gal/205l hot water calorifier
- 240v immersion heater
- Automatic water pump with filter
- Main circuit breaker at switch panel
- Water level gauge
- Deck filler
- Electric freshwater toilet system with 132 gal/ 158 US gal/600l holding tank, content gauge and low noise electric overboard discharge, with macerator backup system as well as dockside discharge system

#### AIR CONDITIONING

- Air conditioning/heating reverse cycle (204,000 BTU fan capacity with 144,000 BTU

- chiller capacity) suitable for temperatures to 40oC (tropical)
- Windscreen demist facility
- Outlets in all areas

#### BILGE PUMPS

- Automatic/manual override electric bilge pumps in engine room (2), rudder area and forward accommodation (8 in all)
- High-capacity manual bilge pump with valve system and suction points in same areas
- Electric bilge pumps have controls and warning lights at main helm and warning light with audible alarm at flybridge helm

#### EXTINGUISHERS / FIRE CONTROL SYSTEMS

- Automatic/manual override fire extinguishers in engine room with warning system at both helm positions
- Hand operated fire extinguishers (9) in owner's stateroom, forward stateroom, port and starboard guest cabins, crew cabins (2), crew mess, galley and wheelhouse

#### OTHER STANDARD EQUIPMENT

- Ensign staff

- Fenders (8)
- Mooring warps (4)
- Boathook
- First Aid kit
- Tool kit
- Owner's manual and engine manual
- Quilted bedspreads supplied to all cabins (except crew cabin)
- Set of towels (8 large, 8 hand)
- Complete set of Lucrezia crystal glassware (8 settings consisting of tumbler, highball and wine glasses)
- Set of Sous Le Soleil crockery (8 settings consisting of plate, cake plate, dessert plate, bowl, cup & saucer)
- Set of stainless steel cutlery (8 settings of David Mellor "Paris" cutlery 7 pieces)
- Ship's document case
- Anchor winch back up handle

#### FINISHES

- Teak-laid decks to transom platform, cockpit deck, steps to side decks, side decks and foredeck walkthrough, steps to flybridge and flybridge
- Timber-laid floor (V groove planked) to galley

- and helm
- Furniture in choice of Alba oak or Rovere oak in satin finish. Silver Oak or Walnut with satin or gloss lacquer finishes available as an option.
- Marble/granite/quartz floors in all bathroom suites
- Thermoformed solid surface wash basins and vanity tops in all guest bathrooms
- Galley counter top in granite/quartz
- Choice of high-quality carpet and fabrics from extensive range
- Curtains, blinds or sunscreens to all windows and portholes (excludes pantograph doors and wheelhouse)
- Crew cabins have fitted carpet, crew bathroom floor, vanity top and counter tops in solid surface
- Non-slip flooring to crew mess