

F Class


PRINCESS
Distinction in Detail



Distinction in Detail



Your yacht is a part of your life. It's a home from home, a space to relax, a gateway to adventure, and a place to spend time with the people who matter most.

A Princess yacht makes the experience unforgettable. Combining breathtaking design, meticulous craftsmanship, cutting-edge technology and exceptional levels of personalisation, our craft set new standards in performance, comfort and style.

Wherever your voyage takes you, you'll remember every moment.



Distinction in Detail

At our shipyards in Plymouth, founded in 1965 on the edge of the English Channel, a highly skilled team of craftspeople come together to create something remarkable.

From designers to engineers, laminators to electricians, carpenters to metalworkers, each one possesses a mastery of their individual craft. And each one is completely focused on the details for which they are responsible.

Because by focusing on every detail, the end result is exactly how we want it to be. By taking pride in every detail, we can be proud of the finished yacht. And by perfecting every detail, we can create the perfect experience.





F Class

Superior style meets exceptional practicality in the stunning F Class. A beautifully considered layout makes clever use of the space to make life onboard effortless, while the sleek geometric design makes every aspect breathtaking, inside and out. It's perfect for families and ideal for entertaining.



F65



The all-new F65 boasts a contemporary use of layout featuring the latest geometric design elements. Focussed around a sociable use of space she provides accommodation for eight guests across four cabins. Vast panoramic saloon windows and signature wrap around front screens offer uninterrupted vistas from the main deck whilst elongated hull windows generously flood her accommodation areas with light. The expansive main deck is segmented into an aft galley with dinette, saloon with large U-shaped sofa plus companion seating opposite the helmsman area which features a side access door to the deck.







The foredeck provides the perfect spot to enjoy outdoor relaxation with split sunpads and the ability to include an integrated cool box.

Her contemporary flybridge is the perfect outdoor entertaining area, with ergonomic dining seating, wetbar with barbecue, coolbox and sink, plus an aft sunbed and L-shaped companion seat with infill as a secondary sunbed.





Take a virtual tour of the F65



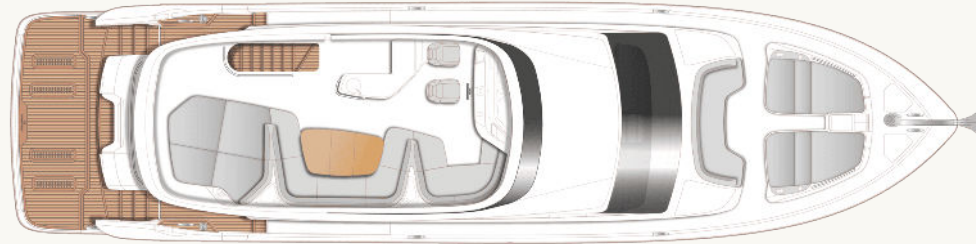
Experience the F65



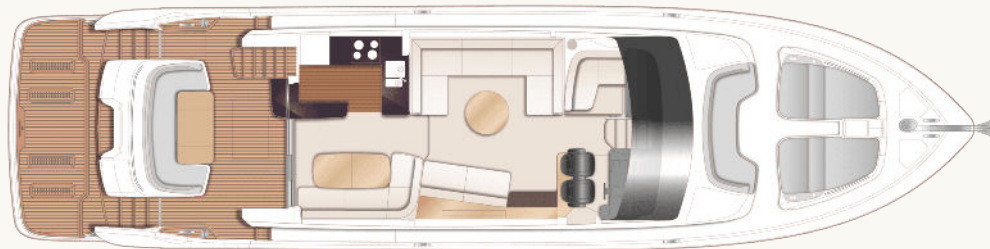


F65

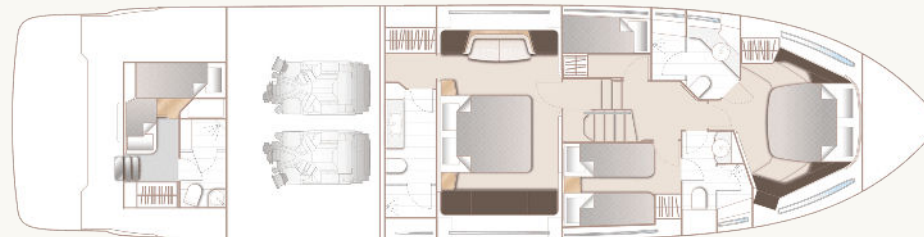
Layout and Specifications



F65 Flybridge



F65 Main Deck



F65 Lower Deck (Optional aft cabin with optional second berth)

Principal Dimensions

Length overall (incl. pulpit)	66 ft 7 in / 20.30m
Length overall (excl. pulpit)	65 ft 8 in / 20.03m
Beam	16 ft 9 in / 5.09m
Draft	5 ft 4 in / 1.63m
Displacement approx.	37,253 kg / 82,129 lbs*
Fuel capacity	902 gal / 1,083 US gal / 4,100 l
Water capacity (excl. calorifier)	176 gal / 212 US gal / 802 l
Black water tank	60 gal / 72 US gal / 272 l

Engines - Diesel

Twin MAN V8-1200 (2 x 1,200mhp)	Maximum speed range – 31-33 knots [†]
---------------------------------	--

Full Specification

Deck fittings

- Teak-laid transom platform, transom steps, cockpit deck, flybridge stairway and steps to side deck
- Reversible electric anchor winch with foredeck and helm position controls
- Stemhead roller with automatic anchor launch and retrieve
- Self-stowing anchor system incorporating one Lewmar Delta anchor (40kg/88lb) with 60m of 9.5mm chain
- Bow rope storage locker
- Freshwater deck/anchor wash
- Deck storage lockers for fenders
- Stainless steel forward fairleads (2)
- Stainless steel stern fairleads (2)
- Cast stainless steel bow, stern and spring cleats (8)
- Stainless steel pulpit and guardrails (32mm round)
- Stainless steel coachroof handrails
- PVC rubbing band with stainless steel insert

- LED deck level lighting
- Illuminated crown logo on transom
- Full set of IMCO navigation lights
- Riding light
- Searchlight with remote control
- Loudhailer (connected to VHF)
- Twin electric horns
- Fuel and water fillers
- Foredeck escape hatch
- Walk through foredeck seating area
- Foredeck sunbathing area with twin sunbeds including cushions with integrated storage and drinks holders (4)

Cockpit and bathing platform

- Self-draining cockpit
- U-shaped seating/dining area with folding teak table and drinks holders
- Upholstered cockpit headlining panels
- LED overhead and deck level lighting
- Integral stairway to flybridge
- Stainless steel handrails

- Lifteraft stowage locker
- Rope stowage lockers
- Starboard lightweight pantograph door for access to lazarette/optional crew cabin
- Lockable gas strut assisted hatch to secondary port side lazarette
- Lockable gas strut assisted hatch to engine room
- Lockable wet locker accessed from port side transom hatch (accepts optional SEABOB (x2) storage and charging rack)
- Locker containing remote fuel cocks, manual bilge pump with valve chest and manual controls for automatic fire extinguishers
- Twin transom doors leading to bathing platform
- Transom seat in teak
- Ensign socket and transom grab rail
- Electro-hydraulic raise/lower teak laid bathing platform (500kg SWL)
- Retractable bathing ladder (manual) in side of hydraulic platform
- Transom steps to access stern from bathing platform when in lowered position
- Hot and cold transom shower

- 220/240v shore support inlet in locker
- Cockpit cover

Flybridge

- Dual station instrumentation and controls (see Helm Position)
- Drinks holders (2) and storage locker tray
- 16" colour multifunctional display screen incorporating GPS/chartplotter, log and echo sounder
- 9" multifunctional display screen incorporating engine instrumentation (including fuel levels and fuel flow)
- Adjustable steering wheel
- Audible and visual alarm for bilge pumps
- Wind deflector screens (grey tinted perspex)
- Separate helm and navigator seats with fore and aft adjustment for helmsman
- L-shaped upholstered companion seating area with infill for conversion to sunbed (storage for infill below)
- Storage tray behind flybridge L-shaped seating with drinks holders
- U-shaped upholstered seating area and storage below

- Storage tray behind flybridge U-shaped seating with drinks holders
- Teak dining table with removable leaf
- Walkaround sunpad aft, drinks holders and storage below
- Fusion Apollo MS-SRX400 audio system paired with Fusion Signature 7.7" waterproof speakers (2)
- L-shaped wetbar including sink with electric barbecue, top loading coolbox and waste bin
- Clear view hatch to aft cockpit
- Stainless steel handrails
- LED deck level lighting
- GRP radar arch
- Matched whip aerials for VHF R/T and radio
- Console, seat, wet bar and table covers
- Optional GRP hardtop with/without electric opening section (or optional folding bimini with optional electro-hydraulic operation)
- USB-A charging point (2)

Helm position

- Twin helm seats with fore and aft adjustment for helmsman, F-logo to helm seat, flip up base to helm seat for door access

- Instrument console with controls incorporating engine instruments and fuel gauges
- Dual station instruments and controls at Flybridge and Lower Helm Positions:
 - 16" colour multifunction display incorporating GPS/chartplotter, log, echo-sounder
 - 9" multifunction display screen incorporating engine instrumentation (including fuel levels and fuel flow)
 - power-assisted electro-hydraulic steering
 - adjustable steering wheel
 - rudder position indicator
 - high-speed magnetic compass
 - electronic engine controls
 - trim tab controls with indicators
 - bow thruster control
 - electric anchor winch remote control
 - autopilot
 - VHF with DSC R/T with intercom
 - remote control searchlight
 - horn button
- Drinks holders
- Small storage tray
- Toughened glass screen (clear for night vision)
- Windscreen wipers with freshwater windscreen wash

- Exterior black mesh sunscreens
- Bilge pump controls with visual pump running warnings
- 24v and 240v electrical control panel
- Riding light, helm and navigation light control switches
- USB charging points (4)
- 220/240v outlet (1)
- LED overhead lighting (24v) and night lighting
- Pantograph helmsman's side door to starboard side deck
- Fitted carpet

Saloon

- U-shaped sofa with storage drawers
- Coffee table
- Two-seater sofa with storage
- L-shaped seat with storage opposite helm area
- Electric opening window to port
- Bottle and glass storage below helm seat
- Sideboard with refrigerator (80l)
- 55" TV on rise and fall
- Fusion Apollo MS-RA770 audio system paired with Focal 100ICW6 speakers (2)
- Manual tension venetian blinds to all windows

and doors

- LED overhead and concealed lighting (24v)
- Access stairway to lower accommodation
- Fitted carpet
- 220/240v outlets (2)

Dining area

- L-shaped sofa
- Folding dining table/drinks holders and crockery drawer
- Stainless steel framed sliding door to cockpit, three panes with integrated hinging window aft of galley (one fixed pane, one sliding pane, one flip up window) and integrated Skysol blinds
- Manual tension venetian blinds to windows
- LED overhead and concealed lighting (24v)
- Fitted carpet
- 220/240v outlets (2)

Galley

- Solid surface countertop
- 4-zone ceramic hob
- Hob extractor fan
- Combination microwave/convection oven with

grill

- Full height fridge/freezer (281l)
- 1.5 bowl stainless steel sink with mixer tap
- Waste bin
- Drawers and storage cupboards
- Teak chopping board
- Manual tension venetian blinds to windows
- LED overhead and task lighting (24v)
- 220/240v outlets (4)
- Timber flooring (V-groove planked)

Accommodation

- All cabins and bathrooms (excluding crew bathroom) feature opening portholes
- All cabins feature 220/240v power points
- All bathrooms (excluding crew bathroom) feature 240v shaver points
- All bathrooms feature electric freshwater toilets

Owner's stateroom

- Large double bed with drawers below
- Twin bedside tables
- Walk-through wardrobe area with hanging, drawer storage and full-length mirror

- Dressing table
- Sofa
- Storage lockers and drawers
- 50" TV
- Fusion Apollo MS-RA770 paired with Focal 100ICW6 speakers (2)
- Panoramic windows including opening porthole
- Manual tension venetian blinds
- LED overhead and concealed lighting (24V)
- Individual berth lights
- 220/240v outlets (4)
- USB charging point (4)
- Fitted carpet

En-suite bathroom

- Wash basin with solid surface vanity top
- Mirror to vanity unit
- Storage lockers
- Shower compartment with automatic pump out
- Extractor fan
- Window with opening porthole
- Manual tension venetian blind
- LED overhead lighting (24v)
- Bathroom accessories
- Solid Surface flooring

Forward stateroom

- Large double bed with drawers below
- Wardrobe with shelves and full-length mirror
- Dressing table
- Storage lockers
- Windows with opening portholes
- Manual tension venetian blind
- Deck hatch
- LED overhead lighting (24v)
- Individual berth lights
- 220/240v outlets (3)
- USB charging points (4)
- Fitted carpet

En-suite bathroom

- Washbasin with solid surface vanity top (thermo-formed)
- Mirror
- Storage lockers
- Shower compartment with automatic pump out
- Extractor fan
- Window with opening porthole
- Manual tension venetian blind
- LED overhead lighting (24v)

- Bathroom accessories
- Solid surface flooring

Starboard guest cabin

- Two single beds with drawers below (with option of sliding double bed conversion)
- Bedside table
- Wardrobe with shelves
- Mirror
- Storage lockers and drawers
- Window with opening portholes
- Manual tension venetian blind
- LED overhead lighting (24v)
- Individual berth lights
- 220/240v outlet (1)
- USB charging points (2)
- Fitted carpet

En-suite bathroom

- Wash basin with solid surface vanity top (thermo-formed)
- Mirror
- Storage lockers
- Shower compartment with automatic pump out

- Extractor fan
- Window with opening porthole
- Manual tension venetian blind
- LED overhead lighting (24v)
- Bathroom accessories
- Solid surface flooring
- Day access door from lower lobby

Port guest cabin

- Two single beds
- Wardrobe with shelf
- Mirror
- Storage lockers
- Window with opening portholes
- Manual tension venetian blind
- LED overhead lighting (24v)
- Individual berth lights
- 220/240v outlet (1)
- USB charging points (2)
- Fitted carpet

Lobby area

- Combination washer /dryer with storage area above located below companionway stairs

(option of separate washing and drying machines if required)

- Fitted carpet
- LED overhead and concealed lighting (24v)

Optional crew cabin (in place of aft lazarette)

- Furniture in specified choice of boat timber
- Single bed with storage below (optional second bunk available)
- Lockers with shelf
- Mirror
- Opening porthole
- Transom glazing with venetian blind
- Lightweight pantograph door with access from transom
- LED overhead lighting (24v)
- Individual berth lights
- 220/240v outlet (1)
- USB Charging points (2)
- Fitted Carpet
- En-suite bathroom
- Bathroom in white laminate
- Washbasin with solid surface vanity top
- Storage lockers
- Shower with automatic pump out

- Extractor fan
- LED overhead lighting (24v)
- Bathroom accessories
- Solid Surface flooring

Power and drive systems

- Propeller shafts in Marinemet
- 5-bladed propellers in nickel aluminium bronze
- Bow thruster (170kgf/375lbf) with dual-station controls
- High speed balanced rudders
- Power-assisted electro-hydraulic steering system
- Trim tabs with indicators
- Cathodic protection for sterngear
- Sterngear, engines, fuel tank fillers, etc all electrically bonded
- Forward and aft engine room bulkheads and engine room headlining to be integrally bonded including insulation with acoustafoam layers
- High volume air intakes
- Engine room extractor fan with electronic time delay
- Engine exhaust silencers and water-cooled exhausts
- Engine beds integrally moulded with hull for

strength and vibration absorption

- Engines flexibly mounted
- Automatic fire extinguisher with remote override control
- Automatic and manual bilge pumps
- Engine room lighting
- Engine room access hatch and ladder
- Electronic engine and gear shift controls
- Fresh water supply point in engine room
- Dripless self-aligning shaft seals

Electrical systems

24 Volt:

- 4 x heavy duty batteries for engine starting
- 4 x heavy duty auxiliary batteries
- Battery link facility with remote control at helm position
- Both battery banks are charged using a voltage sensitive relay that parallels both battery banks when a charging source is present
- 60-amp battery charger charges both banks of batteries via an automatic switch charging system
- 6-amp battery charger for generator battery

- Remote battery master switches with control switch at main switch panel
- Circuit breakers on all circuits
- 12v voltage dropper for certain navigation and radio circuits
- Princess Connect telemetry and maintenance system

220/240 Volt:

- 11 kW diesel generator in own sound shield with water cooled specially silenced exhaust
- Automatic fire extinguisher situated by generator
- 63-amp shore support inlet
- 6-amp battery charger for generator battery
- Generator/shore support change-over switch
- Polarity check system
- Earth leakage safety trip
- Circuit breakers on all circuits
- Power points in: Owner's stateroom, guest cabins, galley and saloon area
- Shaver points in all bathrooms (excluding crew)

Fuel system

- Twin fuel tanks (in NS8 marine grade alloy) with interconnection system giving 902 gal/1,083 US gal/4,100l capacity
- Fuel fillers on port and starboard side deck steps
- High-capacity duplex fuel filters with water traps with change-over valves, water warning sensors connected to warning lights at lower helm
- Remote fuel cocks in cockpit locker
- Fuel gauges at main helm console (via multifunctional display)

Water system

- Water tanks totalling 176 gal/211 US gal/800l plus 16 gal/19 US gal/73l hot water calorifier
- Water heated by engines and 240v immersion heater
- Automatic water pump with filter
- Main circuit breaker at switch panel
- Water level gauge
- Deck filler
- Electric freshwater toilet system with 60 gal/72 US gal/272l holding tank, content gauge and manual overboard discharge, with macerator backup system as well as dockside discharge system

Fire extinguishers

- Automatic/manual override fire extinguishers in engine room with warning system at helm position
- Hand-operated fire extinguishers (6) in owner's stateroom, forward, port and starboard guest cabins, galley and helm position
- Additional extinguisher fitted when optional aft cabin is specified

Bilge pumps

- Automatic/manual override electric bilge pumps in engine room (2), rudder area, lazarette and forward accommodation (6 in all)
- High-capacity manual bilge pump with valve system and suction points in same areas
- Electric bilge pumps have controls and warning lights at main helm and warning light with audible alarm at flybridge helm

Other standard equipment

- Ensign staff
- Fenders (6)

- Mooring warps (4)
- Boat hook
- First-aid kit
- Tool kit
- Owner's manual and engine manual
- Functional bed linen (fitted bottom sheet, loose top sheet and oxford pillowcases) supplied to all cabins (including optional crew cabin, where specified)
- Set of glassware (8 settings consisting of tumbler and wine glasses)
- Set of Princess china (8 settings consisting of plate, side plate, bowl, cup and saucer)
- Set of cutlery (8 settings of David Mellor "Paris" cutlery 7 pieces)
- Ship's document case
- Anchor winch back up handle
- F65 canopy badges

Finishes

- Teak-laid transom platform, transom steps, steps to side decks, cockpit deck and steps to flybridge
- Timber-laid floor (V-groove planked) to galley area and dining area

- Furniture in Rovere oak with satin finish as standard. Optional finishes include ash or silver oak with a satin finish or walnut wood in a satin or gloss finish
- Solid surface floors in all bathroom suites in guest accommodation
- Solid surface wash hand basin vanity tops in all bathrooms
- Galley countertop in solid surface finish
- Choice of high-quality carpet and upholstery fabric from extensive range
- Exterior upholstery in white vinyl as standard, with optional upgrade to Comfort Exterior available
- Manual venetian blinds to all windows and portholes
- Optional crew cabin furniture in specified boat timber with fitted carpet. Crew bathroom has white solid surface vanity tops and floors



F58



The all-new Princess F58 is the latest addition to the acclaimed F-Class series and is unmistakably Princess. Elegant lines, exceptional space and a level of specification and standard of finish normally reserved for much larger craft. This is no truer than with her exterior spaces which have been designed with sociability and relaxation very much in mind. From the vast flybridge that has been designed to maximise guest space, to the foredeck 'terrace' which is large enough to entertain or simply offer a tranquil place to relax, and is a very popular feature borrowed from our larger yachts. Or, the generous cockpit that flows seamlessly into the saloon and down on to the bathing platform which is itself equipped with seating and an optional BBQ to create a mini beach club adjacent to the water.





Inside, the interior blends meticulous craftsmanship with a contemporary, yet timeless design that flows throughout her spacious accommodation. The saloon is surrounded by panoramic windows filling the space with natural light and connecting effortlessly to the outside. The fully equipped galley is situated aft of the saloon and links the cockpit and interior dining spaces making this a highly sociable layout.

On the lower deck are three beautifully detailed cabins including a spacious forward VIP guest cabin, a twin to starboard, which can be converted into a third double, and a full-beam owner's stateroom featuring a 'superyacht' style ensuite bathroom and walk-in wardrobe which also make full use of her generous beam. The new Princess F58 truly is a yacht without compromise and is already proving to be a very popular addition to the F-Class family.

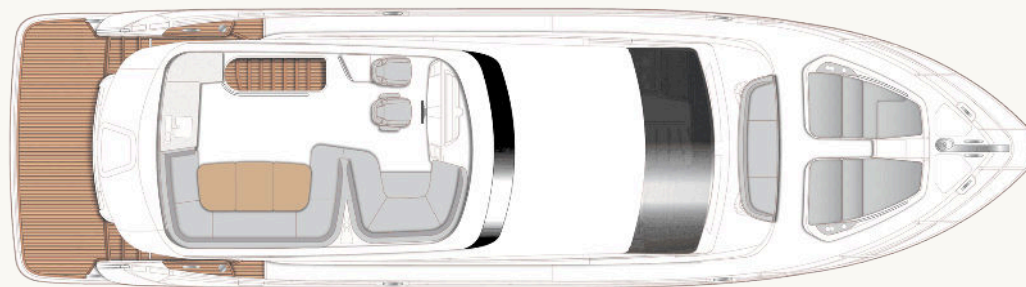




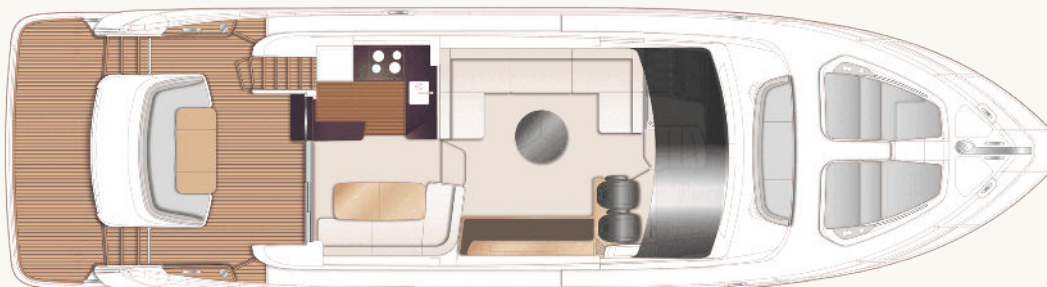
F58

Layouts and Specification

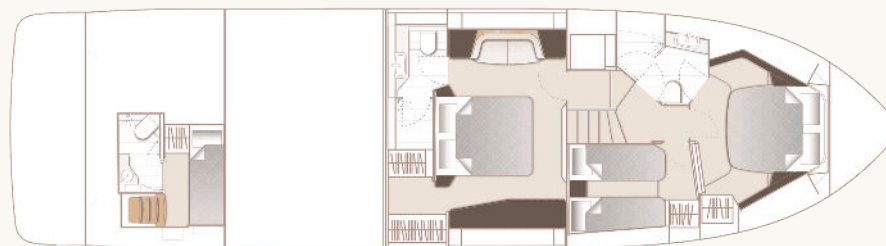




F58 Flybridge



F58 Main Deck



F58 Lower Deck

Principal Dimensions

Length overall (incl. pulpit)	59 ft 8 in / 18.20m
Length overall (excl. pulpit)	58 ft 4 in / 17.77m
Beam	16 ft 1 in / 4.90m
Draft	5 ft 0 in / 1.53m
Displacement approx.	32,318 kg / 71,248 lbs*
Fuel capacity	726 gal / 872 US gal / 3,300 l
Water capacity (excl. calorifier)	139 gal / 166 US gal / 630 l
Black water tank	69 gal / 83 US gal / 315 l

Engines - Diesel

Twin MAN V8-1000 (2 x 1,000mhp)	Maximum speed range – 29-31 knots [†]
Twin MAN V8-1200 (2 x 1,200mhp)	Maximum speed range – 33-35 knots [†]

Full Specification

Deck fittings

- Teak-laid transom platform, transom steps, cockpit deck, flybridge stairway and steps to side deck
- Reversible electric anchor winch with foredeck and main helm controls
- Stemhead roller with automatic anchor launch and retrieve
- Self-stowing anchor system incorporating one 32kg galvanised Lewmar Delta anchor with 40m of 9.5mm galvanised anchor chain
- Deck hatch access to chain locker – 2 lockers forward
- Stainless steel fairleads, with chafing plates (1 pair)
- Stainless steel bow, stern and spring cleats, with chafing plates (4 pairs)
- Stainless steel pulpit and guard rails
- PVC rubbing band with stainless steel insert
- LED deck level lighting
- Illuminated crown logo on transom
- Full set of IMO navigation lights
- Riding light
- Searchlight with remote controls
- Loudhailer (connected to VHF)
- Twin electric horns
- Ensign socket
- Fuel and water fillers (one per side)
- Black water holding tank dockside discharge connection
- Foredeck escape hatch
- Foredeck seating area with fender storage and drink holders (2)
- Foredeck sunbathing area incorporating fixed twin sunpads with integrated storage and drink holders (4)
- Foredeck sunpad covers
- Portside fender storage locker
- Upholstered U-shaped seating
- Folding teak dining table with cup holders (4)
- Stainless steel handrails
- LED overhead and deck level lighting
- Integral stairway to flybridge with teak-laid step treads
- LED lighting to step faces
- Life raft storage locker under flybridge stairs
- Rope storage
- Lockable gas strut assisted hatch to lazarette/ engine room
- Locker containing remote fuel cocks, manual bilge pump with valve chest and manual controls for automatic fire extinguishers
- Transom top locker
- Twin transom gates leading to bathing platform
- Hot and cold flatwash transom shower
- 220/240v shore support inlet
- Cockpit cover

Cockpit and bathing platform

- Self-draining
- Fixed bathing platform

Lower helm

- Twin leather upholstered manual seat with fore and aft adjustment for helmsman
- Instrument console with controls incorporating engine instruments and fuel gauges
- Dual station instrument and controls console at lower helm
 - 16" colour MFD incorporating GPS/chartplotter, log, echo-sounder
 - 9" MFD screen displaying engine instrumentation (including fuel levels and fuel flow)
 - Power-assisted electro-hydraulic steering
 - Adjustable steering wheel
 - High-speed magnetic compass
 - Electronic engine controls
 - Trim tab controls with indicators
 - Bow thruster control
 - Electric anchor winch remote control
 - Autopilot
 - Speed and distance log
 - Echo sounder with alarm
 - VHF with DSC R/T with intercom
 - Remote control searchlight
 - Horn button (to operate twin electric horns)
 - Audible and visual alarm engine warning system

- Audible and visual alarm for bilge pumps
- Engine room fire extinguisher warning system
- Footrest
- Drink holders (3)
- Electric drop window (starboard)
- Toughened glass screen (clear for night vision)
- Windscreen wipers with freshwater windscreen wash
- Glove box to portside dash
- Exterior black mesh windscreen covers
- Bilge pump controls with visual pump running warnings
- 24v and 240v electrical control panel
- Riding light, helm and navigation light control switches
- USB charging points (2) (USB-A and USB-C)
- LED overhead lighting (24v) and night lighting
- Fitted carpet

Flybridge

- Dual station instrumentation and controls (see Lower Helm Position)
- Power assisted electro-hydraulic steering with adjustable steering wheel
- Wind deflector screens

- Twin manual helm seats with fore and aft adjustment for helmsman
- Audible and visual alarm for bilge pumps
- Engine room fire extinguisher warning system
- Clear view hatch to aft cockpit
- Access stairway to aft cockpit
- Stainless steel handrails
- Stainless steel handrail around flybridge hatch
- Top loading cool box in navigators pedestal moulding
- Small U-shaped seat (starboard), with conversion to sunpad
- U-shaped upholstered seating area (starboard)
- Drink holders (8)
- Folding teak table with drink holders (4)
- Servery with sink, storage, electric barbecue and bin
- Fusion MS-SRX400 audio system, paired with Fusion Signature 7.7" waterproof speakers (2)
- LED deck level lighting
- USB-A charging points (2)
- GRP radar arch
- Twin matching whip aerials for VHF R/T and radio
- Covers to console and exterior furniture where appropriate

Deck saloon

- U-shaped sofa (port) with storage drawers below
- Coffee table
- Electric drop window (port)
- Crockery storage drawer
- Sideboard unit with bottle and glass storage and refrigerator
- 50" LED TV on rise and fall
- Fusion MS-RA770 audio system, paired with Focal 100 ICW6 speakers (2)
- Panoramic tinted toughened glass windows port and starboard
- Manual Venetian blinds to all windows
- LED overhead and concealed lighting (24v)
- Access stairway to lower accommodation
- Fitted carpet

Dining area

- L-shape sofa to starboard
- Folding dining table
- Stainless steel framed sliding door to cockpit. Three panes with integrated hinging window aft of galley (one fixed pane, two sliding panes, one

flip up window)

- 220/240v power outlets (1)
- USB charging points (2) (USB-A and USB-C)
- LED overhead and concealed (24v)
- Manual Venetian blinds to windows
- Manual blind to door
- Fitted carpet

Galley

- Galley counter top is Solid Surface in White (satin finish)
- 4-zone ceramic hob
- Hob extractor fan
- Twin top lockers
- Combination microwave/convection oven with grill
- Full height fridge/freezer (270l)
- Sink is stainless steel with mixer tap
- Waste bin
- Drawers and storage cupboards
- Corner galley storage bin (top loading) with work top lid
- 220/240v power outlets (4)
- Manual Venetian blinds to windows
- Timber-laid flooring (V-groove planked)

Accommodation

- All cabins and bathrooms feature opening portholes
- All cabins feature 220/240v power points and USB charging points
- All bathrooms feature electric freshwater toilets and 240v shaver points

Owner's stateroom

- Large double bed with bedside tables and drawers below
- Two-seater sofa to port, with cupboard storage
- Walk-in wardrobe to starboard with shelves and mirror
- Sideboard unit to starboard
- Pull out mirror to vanity draw in sideboard unit
- Fusion Apollo MS-RA670 audio system paired with Focal 100 ICW6 speakers (2)
- Panoramic windows including opening portholes
- Manual Venetian blinds to all windows
- LED overhead and concealed lighting (24v)
- Individual berth lights
- 220/240v outlets (2)
- USB charging points (4) (2x USB-A and 2x USB-

C)

- Fitted carpet

En-suite bathroom

- Solid Surface vanity top and thermoformed sink
- Mirror with medicine cabinet unit
- Storage lockers
- Shower compartment with automatic pump out
- Extractor fan
- Window with opening porthole
- Manual Venetian blind to window
- LED overhead and concealed lighting (24v)
- Bathroom accessories (toilet roll holder, toilet brush and holder, soap dispenser, toothbrush tumbler and robe hooks)
- Solid Surface flooring

Forward cabin

- Large double bed with drawers below
- Half height mirror above sideliner, with storage behind (port)
- Wardrobe with shelves and mirror
- Top lockers
- Windows with opening portholes

- Manual Venetian blind to all windows
- Deck escape hatch
- LED overhead and concealed lighting (24v)
- Individual berth lights
- 220/240v outlets (2)
- USB charging points (4) – two per side (2x USB-A and 2x USB-C)
- Fitted carpet

En-suite bathroom

- Accessible from both the lobby/passageway and forward cabin
- Solid Surface vanity top and thermoformed sink
- Mirror with storage
- Storage lockers
- Shower compartment with automatic pump out
- Extractor fan
- Window with opening porthole
- Manual Venetian blind to window
- LED overhead and concealed lighting (24v)
- Bathroom accessories (toilet roll holder, toilet brush and holder, soap dispenser, toothbrush tumbler and robe hooks)
- Solid Surface flooring

Starboard guest cabin

- Two single beds with drawers below
- Bedside table
- Wardrobe with shelves and mirror
- Top lockers
- Window with opening portholes
- Manual Venetian blind to window
- LED overhead and concealed lighting (24v)
- Individual berth lights
- 220/240v outlet (1)
- USB charging points (2) (USB-A and USB-C)
- Fitted carpet

Lower lobby / passageway area

- Storage for detergent and laundry equipment
- Under-stair storage locker
- Double height storage locker
- LED overhead lighting (24v)

Power and drive systems

- Propeller shafts in Marinemet
- 5-bladed propellers in nickel aluminium bronze
- Bow thruster 170kgF with dual-station controls

- High speed balanced rudders
- Power-assisted steering system
- Trim tabs with indicators
- Cathodic protection for sterngear
- Sterngear, engines, fuel tank fillers, etc all electrically bonded
- Forward and aft engine room bulkheads and engine room headlining to be integrally bonded including insulation with acoustafoam layers
- High volume air intakes
- Engine room extractor fan with electronic time delay
- Engine exhaust silencers and water-cooled exhausts
- Engine beds integrally moulded with hull for strength and vibration absorption
- Engines flexibly mounted
- Automatic fire extinguisher with remote override control
- Automatic and manual bilge pumps
- Engine room lighting
- Engine room access hatch and ladder
- Electronic engine and gear shift controls
- Fresh water supply point in engine room
- Dripless self-aligning shaft seals

Electrical systems

24 Volt:

- 4 x heavy duty batteries for engine starting
- 4 x heavy duty auxiliary batteries
- Battery link facility with remote control at helm position
- Both battery banks are charged using a voltage sensitive relay that parallels both battery banks when a charging source is present
- 60-amp 24v float battery charger
- Remote battery isolator control switches at main switch panel position
- Circuit breakers on all circuits
- 12v voltage dropper/converters for certain navigation and radio circuits
- Princess Connect telemetry and maintenance system

220/240 Volt:

- European specification: 11kW @ 50Hz diesel generator, in own sound shields, water cooled and with specially silenced exhaust systems and with remote operation from main control panel

- USA specification: 11.5kW @ 60Hz diesel generator in own sound shields, water cooled and with specially silenced exhaust systems and with remote operation from main control panel
- Automatic fire extinguisher situated in engine room
- Shore power/generator change over control operated from main control panel
- Polarity check system
- Earth leakage safety trip
- Circuit breakers on all circuits
- All cabins feature 220/240v power points and USB charging points
- All bathrooms feature electric freshwater toilets and 240v shaver points

Fuel system

- Twin fuel tanks in NS8 marine grade alloy with interconnection system 726 gal / 872 US gal / 3300 l capacity
- Fuel fillers to port and starboard decks
- High capacity duplex fuel filters/water traps with integral changeover valves
- Water warning sensors connected to warning lights at main helm position

- Remote fuel isolation controls in cockpit locker for main engines and generator
- Fuel gauges displayed on MFDs at both helm consoles

Water system

- Water tanks giving a water capacity (excl. calorifier) of 139 gal / 166 US gal / 630 l capacity plus 73 litres hot water calorifier
- Water heated by engines and 3kW immersion heater
- Automatic water pump with filter
- Main circuit breaker at main switch panel
- Water level gauge
- Deck filler
- Electric quiet flush toilet system linked to 69 gal / 83 US gal / 315 l black water tank, content gauge and manual overboard discharge, with macerator backup system as well as dockside discharge system

Bilge pumps

- Automatic/manual override electric bilge pumps in engine room (2), lazarette (2) and forward

accommodation (6 in total)

- High capacity manual bilge system with valve system and suction points in the same areas
- Electric bilge pumps have controls and warning lights at main helm with audible alarm at flybridge helm

Extinguishers / fire control systems

- Automatic engine room fire extinguisher system (with manual override) and warning system at main and flybridge helm positions providing automatic shutdown of engines, generators and ventilation fans
- Automatic fire extinguisher system under main helm
- Hand operated fire extinguishers (5) in owner's stateroom, forward and starboard guest cabin, galley and main helm position
- Additional extinguisher fitted when optional crew cabin is specified

Other standard equipment

- Ensign staff
- Fenders (6)

- Mooring warps (4)
- Tool kit
- Boat hook
- Anchor winch back up handle
- First Aid kit
- Bed covers supplied to all cabins (except optional crew cabin)
- Owner's manual and engine manual
- Ship's document case

Finishes

- Teak-laid transom platform, transom steps, cockpit deck, flybridge stairway and steps to side deck
- Timber-laid flooring (V-groove planked) to galley
- Furniture in Rovere oak satin finish as standard (Silver oak satin finish, Ash satin finish or Walnut in satin or gloss finish available as an option)
- Solid Surface floors in all bathroom suites in guest accommodation
- Solid Surface wash basin vanity tops in all bathroom suites in guest accommodation
- Galley counter top in Solid Surface
- Exterior upholstery in white vinyl as standard, with optional upgrade to Comfort Exterior

available

- Choice of high-quality carpets and upholstery fabrics from extensive range
- Manual blinds to all windows and portholes (except crew porthole)
- Optional crew cabin to have furniture in specified boat timber with fitted carpet. Crew bathrooms have Solid Surface vanity tops and GRP floors with tracking



F55



Equipped with twin Volvo D13-900 engines providing speeds up to 33 knots, in addition to a deep-V resin-infused hull, the F55 delivers dynamic and effortless seakeeping.

As seen on larger yachts in the range, the cockpit servery unit connects to the galley unit, seamlessly integrating the two entertainment areas. The spacious main deck saloon is accentuated by vast saloon windows, complemented by subtle accent lighting, soft fabric finishes and hand-stitched detailing. A contemporary U-shaped sofa with convertible coffee/dining table and sofa adjacent, creates the perfect place to spend time with loved ones.





Below deck, new expansive hull windows generously flood the three cabins with light, including the master stateroom with dressing table, breakfast area and en-suite bathroom, a forward double guest cabin and starboard twin cabin with the option of a double bed conversion. An optional single aft cabin with en-suite and storage is ideal for crew.





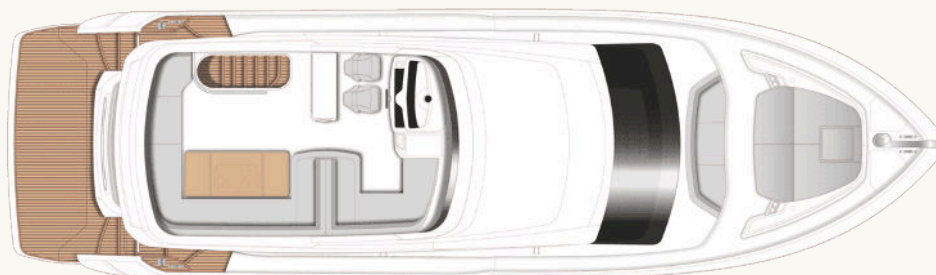
Take a virtual tour of the F55



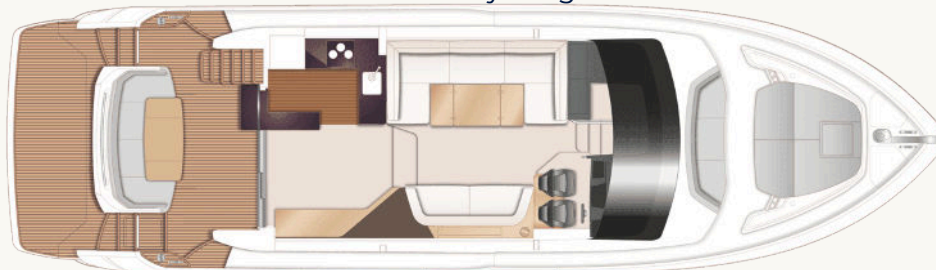


F55

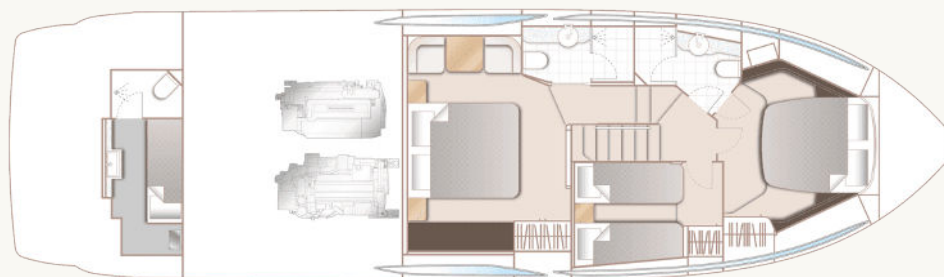
Layouts and Specifications



F55 Flybridge



F55 Main Deck



F55 Lower Deck

Principal Dimensions

Length overall (incl. pulpit)	58 ft 0 in / 17.68m
Length overall (excl. pulpit)	55 ft 8 in / 16.98m
Beam	16 ft 0 in / 4.87m
Draft	4 ft 11 in / 1.49m
Displacement approx.	29,088 kg / 64,128 lbs*
Fuel capacity	605 gal / 726 US gal / 2,750 l
Water capacity (excl. calorifier)	136 gal / 164 US gal / 620 l
Black water tank	69 gal / 83 US gal / 315 l

Engines - Diesel

Twin Volvo D13-900 (2 x 900mhp)	Maximum speed range – 31-33 knots [†]
---------------------------------	--

Full Specification

Deck fittings

- Teak-laid transom platform, cockpit deck, flybridge stairway and steps to side deck
- Reversible electric anchor winch with foredeck and helm position controls
- Stemhead roller with automatic anchor launch and retrieve
- Self-stowing (25kg/55lb) galvanised Lewmar Delta anchor with 40m of galvanised 9.5mm anchor chain
- Bow rope storage locker
- Foredeck forward facing seating
- Foredeck sunbathing area
- Drinks holders to foredeck seating
- Deck storage locker for fenders and ropes
- Stainless steel bow, stern and spring cleats (8)
- Stainless steel pulpit and guardrails
- Stainless steel coachroof handrails
- Foredeck hatch
- PVC rubbing band with stainless steel insert
- LED deck level lighting

- Illuminated crown logo to transom
- Full set of IMCO navigation lights
- Riding light
- Searchlight with remote control
- Twin electric horns
- Loudhailer
- Fuel and water fillers

Cockpit and bathing platform

- Self-draining
- Fixed bathing platform
- U-shaped seating/dining area
- Folding teak table
- Stairs to flybridge
- LED overhead and deck level lighting
- Stainless steel handrails
- Rope stowage locker
- Lockable gas strut assisted hatch to engine room
- Lockable gas strut assisted hatch to lazarette
- Locker containing remote fuel cocks, manual bilge pump with valve chest and manual controls

for automatic fire extinguishers

- Twin transom gates leading to bathing platform
- Retractable bathing ladder (manual) in side of bathing platform
- Transom steps to access stern from bathing platform
- Hot and cold transom shower
- 220/240v shore support inlet in locker
- Cockpit cover

Flybridge

- Dual station instrumentation and controls with 16" Garmin screen displaying engine instrumentation, fuel gauges, rudder position indicator and chartplotter (either individual or combined)
- Adjustable steering wheel
- Top loading coolbox adjacent to helm
- Audible and visual alarm for bilge pumps
- Twin helm seats with manual fore and aft adjustment for helmsman

- Drinks holders
- U-shaped upholstered seating starboard fore (converts to sunbed)
- U-shaped upholstered seating area starboard aft
- Teak folding table
- Fusion MS-SRX400 audio system with waterproof Fusion signature 6.5" speakers linked to saloon audio unit
- Wetbar including sink and stowage
- Clear view hatch to aft cockpit
- Wind deflector screens
- Stainless steel handrails
- Stainless steel handrail forward of flybridge hatch
- LED deck level lighting
- GRP radar arch
- Matched whip aerials for VHF R/T and radio
- Liferaft stowage
- ROKK twin USB socket
- Console and seat covers

Lower helm position

- Twin helm seats with manual fore and aft adjustment for helmsman
- Instrument console with 16" Garmin screen

displaying engine instrumentation, fuel gauges, rudder position indicator and chartplotter (either individual or combined)

- Volvo engines have a 7" display for engine instrumentation at both control positions. The 16" screen incorporates Volvo software to allow engine instrumentation and autopilot function displays, as well as the 7" display. If a second 16" screen is ordered it will be fitted immediately in front of the helm position with the engine instrumentation display to starboard.
- Dual station instruments and controls at Flybridge and Lower Helm Positions:
 - power-assisted electric steering
 - adjustable steering wheel
 - high-speed magnetic compass
 - electronic engine controls
 - trim tab controls with indicators
 - bow thruster control
 - electric anchor winch remote control
 - autopilot (incorporated into 16" screen at both control positions)
 - speed and distance log (incorporated into 16" screen at both control positions)
 - echo sounder with alarm
 - VHF with DSC R/T with intercom

- remote control searchlight
- horn button
- Footrest in boat timber
- Drinks holders
- Toughened glass screen (clear for night vision)
- Windscreen wipers with freshwater windscreen wash
- Black mesh sunscreens
- Bilge pump controls with visual pump running warnings
- 24v and 240v electrical control panel
- Riding light, helm and navigation light control switches
- Twin USB charging point
- LED overhead lighting (24v) and night lighting
- Electric drop window (Starboard)
- Fitted carpet

Deck saloon

- U-shaped sofa
- Folding leaf dining table or coffee table
- Electric drop window (port)
- Two-seater sofa
- Crockery storage drawer
- Sideboard unit with bottle and glass storage to

starboard aft saloon

- UHD LED TV (50") on rise and fall
- Apollo MS-RA670 audio system, with WiFi/DAB and external USB socket. Paired with Fusion 6" MS-CL602 speakers (2)
- Blinds or sunscreens to all windows and doors
- LED overhead and concealed lighting (24v)
- Access stairway to lower accommodation
- Fitted carpet

Galley

- Solid Surface counter top in white
- Ceramic 4-zone hob
- Hob extractor
- Combination microwave/convection oven with grill
- Stainless steel sink with mixer tap
- Full height fridge/freezer (270l)
- Waste bin
- Chopping board
- Drawers and storage cupboards
- Refrigerator
- Stainless steel framed sliding door to cockpit with integrated hinging window aft of galley
- Blinds or sunscreens to all windows and doors

- LED overhead and task lighting (24v)
- 220/240v outlets (4)
- Timber-laid flooring

Accommodation

- All cabins and bathrooms feature opening portholes
- All cabins feature 220/240v power points
- All bathrooms feature electric freshwater toilets and 240v shaver points

Owner's stateroom

- Large double bed with drawers below
- Twin bedside tables
- Wardrobe with shelves and mirror
- Dressing table
- Pull out mirror to vanity unit
- Occasional table with seats fore and aft
- Storage lockers and drawers
- Fusion MS-SRX400 paired with Fusion 6" MS-CL602 speakers (2)
- Panoramic windows including opening porthole with venetian blinds
- LED overhead and concealed lighting (24V)

- Individual berth lights
- 220/240v outlets (2)
- 2x USB charging points (at each berth)
- Fitted carpet

En-suite bathroom

- Wash basin with Solid Surface vanity top
- Mirror
- Storage lockers
- Shower compartment with automatic pump out
- Extractor fan
- Window with opening porthole and venetian blind
- LED overhead and concealed lighting (24V)
- Bathroom accessories
- Solid Surface flooring

Forward stateroom

- Large double bed with drawers below
- Wardrobe with shelves and mirror
- Dressing table
- Mirror to vanity unit
- Storage lockers
- Window with opening porthole and venetian

blind

- Deck hatch
- LED overhead and concealed lighting (24v)
- Individual berth lights
- 220/240v outlets (2)
- 2 x USB charging points (at each berth)
- Fitted carpet

En-suite bathroom

- Wash basin with Solid Surface vanity top
- Mirror
- Storage lockers
- Shower compartment with automatic pump out
- Extractor fan
- Window with opening porthole and venetian blind
- LED overhead and concealed lighting (24V)
- Bathroom accessories
- Solid Surface flooring

Starboard guest cabin

- Two single beds with drawers below
- Bedside table
- Wardrobe with shelves

- Mirror
- Storage lockers and drawers
- Window with opening portholes and venetian blind
- LED overhead and concealed lighting (24v)
- Individual berth lights
- 220/240v outlets (2)
- 2 x USB charging points (at each berth)
- Fitted carpet

Power and drive systems

- 5-bladed propellers in nickel aluminum bronze
- Bow thruster is 130kgf/286lbf with dual-station controls
- Engine room lighting
- Engine room access hatch and ladder
- Power-assisted electro-hydraulic steering system
- Trim tabs with indicators
- Electronic engine and gear shift controls
- Engine room extractor fans with electronic time delay
- Fresh water supply point in engine room
- Dripless self-aligning shaft seals

Electrical systems

24 Volt:

- 4 x heavy duty batteries for engine starting
- 4 x heavy duty auxiliary batteries
- Battery link facility with remote control at helm position
- Both battery banks are charged using a voltage sensitive relay that parallels both battery banks when a charging source is present
- 60-amp battery charger
- Remote battery master switches with control switch at main switch panel
- Circuit breakers on all circuits
- 12v voltage dropper for certain navigation and radio circuits
- Princess Connect telemetry and maintenance

220/240 Volt:

- 9.5Kw diesel generator in own sound shield with water cooled specially silenced exhaust
- Automatic fire extinguisher situated in the engine room
- 50-amp shore support inlet
- Generator/shore support change-over switch
- Polarity check system

- Earth leakage safety trip
- Circuit breakers on all circuits
- Power points in: Owner's stateroom, guest cabins, galley and saloon area
- Shaver points in all bathrooms

Fuel system

- Twin fuel tanks (in NS8 marine grade alloy) with interconnection system giving 605 gal/726 US gal/2,750l capacity
- Fuel fillers on port and starboard side decks
- High-capacity duplex fuel filters with water traps with change-over valves
- Water warning sensors connected to warning lights at lower helm
- Remote fuel cocks in cockpit locker
- Fuel gauges at main helm console

Water system

- Water tanks totalling 136 gal/164 US gal/620l plus 16 gal/19 US gal/73l hot water calorifier
- Water heated by engines and 240v immersion heater
- Automatic water pump with filter

- Main circuit breaker at switch panel
- Water level gauge
- Deck filler
- Electric freshwater toilet system with 69 gal/83 US gal/315l black water tank, content gauge and manual overboard discharge, with macerator backup system as well as dockside discharge system

Fire extinguishers

- Automatic/manual override fire extinguishers in engine room with warning system at helm position
- Hand-operated fire extinguishers (5) in owner's stateroom, forward and starboard guest cabin, galley and helm position
- Additional extinguisher fitted when optional aft cabin is specified

Bilge pumps

- Automatic/manual override electric bilge pumps in engine room (2), lazarette and forward accommodation (5 in all)
- High-capacity manual bilge pump with valve

- system and suction points in same areas
- Electric bilge pumps have controls and warning lights at main helm and warning light with audible alarm at flybridge helm

Other standard equipment

- Ensign staff
- Fenders (6)
- Mooring warps (4)
- Boat hook
- First Aid kit
- Tool kit
- Owner's manual and engine manual
- Quilted bedspreads supplied to all cabins (except optional crew cabin)
- Ship's document case
- Anchor winch back up handle

Finishes

- Teak-laid decks to transom platform, steps to side decks, cockpit deck and steps to flybridge
- Timber-laid floor to galley area
- Furniture in Rovere oak with satin finish as standard. Optional finishes include ash or silver

oak with a satin finish or walnut wood in a satin or gloss finish

- Solid Surface floors in all bathroom suites in guest accommodation
- Solid Surface wash basin and counter tops in all bathrooms
- Galley counter top in Solid Surface finish
- Exterior flybridge helms seat upholstery in Comfort Exterior as standard
- Additional exterior upholstery in white vinyl as standard, with optional upgrade to Comfort Exterior available
- Choice of high-quality carpet and upholstery fabric from extensive range
- Blinds or sunscreens to all windows and portholes



F50



Featuring the latest F Class exterior styling, and advanced technology on-board, the F50 flybridge yacht delivers dynamic performance at sea.

The F50 features a sophisticated standard of refinement with contemporary finishes and handcrafted elements throughout. The sociable cockpit leads through to the main saloon, with open galley aft and large U-shaped sofa and dining table for six guests.





Guests are accommodated on-board across three beautifully appointed cabins, two of which are en-suite. The spacious full-beam master stateroom invites relaxation, with a double bed, sofa and dressing area. The generous en-suite forward stateroom includes a large double bed with the option of scissor berths to provide flexibility for guests.

New technology is available on-board, including Gyro stabilizers and Volvo Penta Easy boating as an option to complement the F50's advanced resin-infused hull and efficient twin Volvo D8-IPS 800 (2 x 600mhp) engines which provide speeds up to 34 knots.



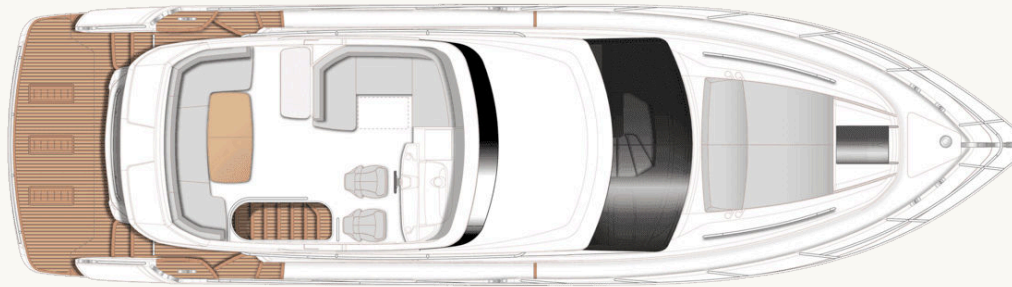


Take a virtual tour of the F50

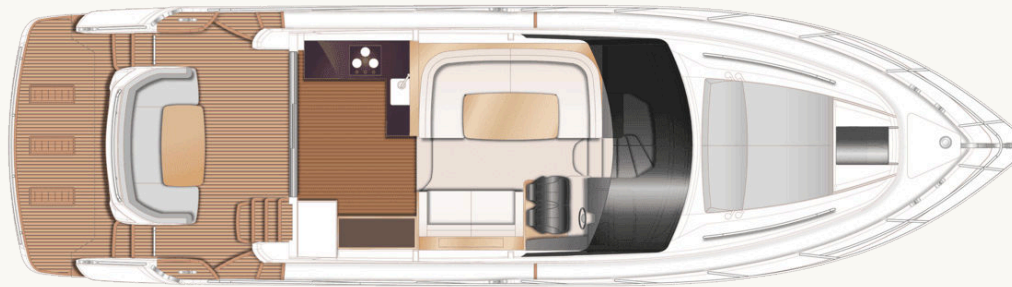


F50

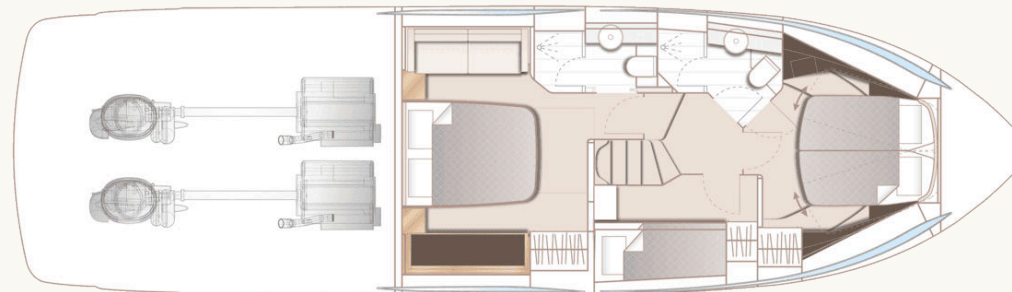
Layout and Specifications



F50 Flybridge



F50 Main Deck



F50 Lower Deck

Principal Dimensions

Length overall (incl. pulpit)	51 ft 4 in / 15.65m
Length overall (excl. pulpit)	49 ft 8 in / 15.14m
Beam	14 ft 1 in / 4.30m
Draft	4 ft 7 in / 1.39m
Displacement approx.	21,331 kg / 47,027 lbs*
Fuel capacity	406 gal / 488 US gal / 1,850 l
Water capacity (excl. calorifier)	94 gal / 113 US gal / 428 l
Black water tank	32 gal / 39 US gal / 150 l

Engines - Diesel

Twin Volvo D8 IPS 800 (2 x 600mhp)	Maximum speed range – 32-34 knots [†]
------------------------------------	--

Full Specification

Deck fittings

- Teak-laid transom platform, cockpit deck, flybridge stairway and steps to side deck
- Reversible electric anchor winch with foredeck, main helm and flybridge controls
- Stemhead roller with automatic anchor launch and retrieve
- Self-stowing galvanised Lewmar Delta anchor (20kg/44lbs) with flush pin shackle and 40m of 9.5mm chain
- Deck hatch access to chain locker
- Fender storage
- Stainless steel bow and stern fairleads
- Stainless steel bow, stern and spring cleats
- Stainless steel pulpit and guard rails
- Stainless steel coachroof and flybridge handrails
- Foredeck hatch
- PVC rubbing band with stainless-steel insert
- LED deck level lighting
- Illuminated crown logo to transom
- Full set of IMCO navigation lights
- Riding light

- Twin beam searchlight with dual station remote controls
- Twin electric horns
- Fuel and water fillers
- Foredeck sunbed recess

Cockpit and bathing platform

- Self-draining
- U-shaped seating/dining area with teak table
- LED overhead and deck level lighting
- Stainless steel handrails
- Lockable gas strut assisted hatch to engine room/lazarette
- Liferaft stowage locker
- Storage lockers
- Locker containing remote fuel cocks, manual bilge pump with valve chest and manual controls for automatic fire extinguishers
- Integral stairway to flybridge with teak step treads
- Twin transom gates leading to bathing platform
- Hot and cold transom shower

- 220/240v shore support inlet
- Cockpit canvas cover
- Transom hatch to stern lazarette
- Transom bathing platform with fold away swimming ladder (electro-hydraulic raise/lower mechanism for transom platform (450kg SWL) is optionally available)

Flybridge

- Dual station instruments and controls
- Autopilot controls
- Adjustable steering wheel
- Audible and visual alarm for bilge pumps and water in fuel
- Twin helm seats with fore and aft adjustment for helmsman
- Refrigerated top loading coolbox
- Large U-shaped upholstered seating
- Folding teak table
- L-shaped seat (converts to sunbed)
- Fusion Apollo marine stereo system connected to Fusion 7.7" waterproof speakers (2)

- Clear view hatch to aft cockpit
- Wind deflector screens
- Stainless steel handrails
- LED deck level lighting
- GRP radar arch
- Twin matching whip aerials for VHF R/T and radio
- Console and seat covers
- Optional wetbar with barbecue, sink, waste bin and storage
- Optional bimini

Helm position

- Double leather upholstered helm seats
- Console with 16" Volvo/Garmin display incorporating engine instruments and chartplotter
- Dual station instruments and controls at flybridge and lower helm positions:
 - power-assisted steering
 - adjustable steering wheel
 - rudder position indicator
 - high-speed magnetic compass
 - electronic engine controls
 - joystick control

- trim tab controls with indicators
- electric anchor winch remote control
- speed and distance log (incorporated into 16" screen at lower control position)
- echo sounder with alarm (incorporated into 16" screen at lower control position)
- autopilot
- VHF with DSC R/T and intercom
- remote control searchlight
- horn button
- Drinks holders
- Toughened glass screen (clear for night vision)
- Windscreen wipers with freshwater windscreen wash
- Exterior black mesh windscreen covers
- Bilge pump controls with visual pump running warnings
- 24v and 240v electrical control panel
- Riding light, helm and navigation light control switches
- USB connection point (1)
- LED overhead lighting (24v) and night lighting
- Opening window adjacent to helmsman
- Fitted carpet

Deck saloon

- Triple stainless steel framed sliding door to cockpit
- U-shaped sofa to port
- Dining table
- Two-seater sofa to starboard
- Fusion Apollo marine audio system connected to Fusion 6" CL602 speakers (2)
- Manual tension Venetian blinds or curtains to all windows
- LED overhead lighting (24v)
- Stairway to lower accommodation
- Fitted carpet

Galley

- Solid Surface countertop
- 3-zone ceramic hob
- Extractor fan
- Combination microwave/convection oven with grill
- Stainless steel sink with mixer tap
- Chopping board
- Refrigerator with freezer compartment (155l)
- Optional full height fridge/freezer (270l)
- Waste bin
- Drawers and storage cupboards

- Dedicated crockery and cutlery storage
- Full height larder unit
- Sideboard with storage, drinks fridge and provision for optional ice maker
- Bottle and glassware storage
- Manual tension venetian blinds or curtains to all windows and doors
- LED overhead and task lighting (24v)
- 220/240v outlets (4)
- Timber flooring (V-groove planked)

Accommodation

- All cabins and bathrooms feature opening portholes
- All cabins feature 220/240v power points
- All bathrooms feature electric freshwater toilets and 240v shaver points
- Main companionway has storage space below with option for combination washer/dryer

OWNER'S STATEROOM

- Large double bed with drawers below
- Twin bedside tables
- Wardrobe with shelves

- Dressing table
- Mirror
- Sofa
- Storage lockers and drawers
- Panoramic windows including opening portholes
- Manual tension venetian blinds
- LED overhead lighting (24v)
- Individual berth lights
- 220/240v outlets (2)
- Fitted carpet

En-suite bathroom

- Wash hand basin with Solid Surface vanity top
- Mirror
- Storage lockers
- Shower compartment with automatic pump out
- Extractor fan
- Window with opening porthole
- Manual tension venetian blind
- LED overhead lighting (24v)
- Bathroom accessories
- Solid Surface flooring

Forward stateroom

- Large double bed with drawers below (option of scissor berths)
- Wardrobe with shelves
- Dressing table
- Mirror
- Storage lockers and drawers
- Window with opening porthole
- Manual tension venetian blind
- Deck hatch with integrated skylight and blind
- LED overhead lighting (24v)
- Individual berth lights
- 220/240v outlets (2)
- Fitted carpet

En-suite bathroom

- Wash hand basin with Solid Surface vanity top
- Mirror
- Storage lockers
- Shower compartment with automatic pump out
- Extractor fan
- Window with opening porthole
- Manual tension venetian blind
- LED overhead lighting (24v)
- Bathroom accessories
- Solid Surface flooring

Starboard guest cabin

- Two single bunk beds
- Wardrobe with shelves
- Mirror
- Storage lockers
- Window with opening porthole
- Manual tension venetian blinds
- LED overhead lighting (24v)
- Individual berth lights
- 220/240v outlets (2)
- Fitted carpet

Power and drive systems

- Twin Volvo IPS contra rotating propellers via pod drive
- Engine room lighting
- Engine room access hatch and ladder
- Power-assisted electronic steering system with hydraulic back-up
- Trim tabs with indicators
- Electronic engine controls
- Joystick manoeuvring system
- Volvo IPS active corrosion protection system for pod drive

- Engine room extractor fan with electronic time delay

Electrical systems

24 Volt:

- 4 x heavy-duty batteries for engine starting
- 4 x heavy-duty auxiliary batteries
- Battery link facility with remote control at helm position
- Both battery banks are charged using a voltage sensitive relay that parallels both battery banks when a charging source is present
- 40-amp 24v battery charger
- Remote battery master switches with control switch at main switch panel
- Circuit breakers on all circuits
- 12v voltage dropper for certain navigation and radio circuits
- Princess Connect telemetry and maintenance system

220/240 Volt:

- 4 kW generator in own sound shield with water

cooled specially silenced exhaust

- Automatic fire extinguisher
- 50-amp shore support inlet
- Polarity check system
- Earth leakage safety trip
- Circuit breakers on all circuits
- Power points (240v) in: owner's stateroom, guest cabins, galley and saloon area
- Shaver points in all bathrooms

Fuel system

- Fuel tanks (in NS8 marine grade alloy) with interconnection system giving 406 gal/488 US gal/1,850l capacity
- Fuel fillers on port and starboard side decks
- High-capacity Simplex fuel filter with water trap and change-over valves, water warning sensor connected to audible and visual warning lights at both helm stations
- Remote fuel cocks in cockpit locker
- Fuel gauges at both helm stations

Water system

- Water tanks totalling 94 gal/113 US gal/428l plus

9 gal/11 US gal/45l hot water calorifier

- Water heated by engines and 240v immersion heater
- Automatic water pump with filter
- Pump main circuit breaker at AC/DC switch panel
- Water level gauge
- Deck filler
- Electric freshwater toilet system with holding tank, contents gauge and manual overboard discharge as well as dockside discharge system

Extinguishers / fire control systems

- Automatic/manual override fire extinguishers in engine room with warning system at flybridge and lower helm positions
- Hand operated fire extinguishers (5) in owner's stateroom, forward stateroom, starboard guest cabin, galley and lower helm position

Bilge pumps

- Automatic/manual override electric bilge pumps in engine room (2) and forward accommodation (4 in all)

- High-capacity manual bilge pump with valve system and suction points in same areas
- Electric bilge pumps have controls and warning lights at main helm and warning light with audible alarm at flybridge helm

Other standard equipment

- Ensign staff
- Fenders (6)
- Mooring warps (4)
- First Aid kit
- Tool kit
- Owner's manual and engine manual
- Quilted bedspreads supplied to all cabins
- Ship's document case
- Anchor winch back up handle

Finishes

- Teak-laid decks to transom platform, cockpit deck, steps to side decks, steps to flybridge
- Timber-laid floor to galley (V-groove planked)
- Furniture in Rovere oak with satin finish as standard. Optional finishes include ash or silver oak with a satin finish or walnut wood in a satin

or gloss finish

- Galley in specified choice of boat timber with option for lower portside galley units to be in HPL soft matt feel finish
- Solid Surface floors in all bathroom suites in guest accommodation
- White Solid Surface vanity tops in all bathroom suites in guest accommodation
- White Solid Surface galley countertop
- Choice of high-quality carpet and upholstery fabric from extensive range
- Curtains, manual tension blinds or sunscreens to all windows and portholes



F45



The exceptional F45 flybridge delivers unparalleled space, quality and flexibility for the ultimate on-water experience. Her extended flybridge includes a seating area with teak dining table and forward L-shaped seats that convert to a sunpad when required. At the touch of a button, her unique, electrically-sliding transom seating arrangement extends the length of the cockpit area to deliver unrivalled main deck space for a 45ft yacht.





Below deck, a full beam owner's cabin complemented by a forward en-suite cabin await and exceed your accommodation expectations belying her sleek proportions. Powered by Volvo IPS 600's and reaching a top speed of up to 31 knots, the F45 is a breathtakingly beautiful craft. Together with its elegant full-length hull windows, beautifully resolved surfacing, and unusual design detail, the F45 establishes itself as the pinnacle of small flybridge yachts.



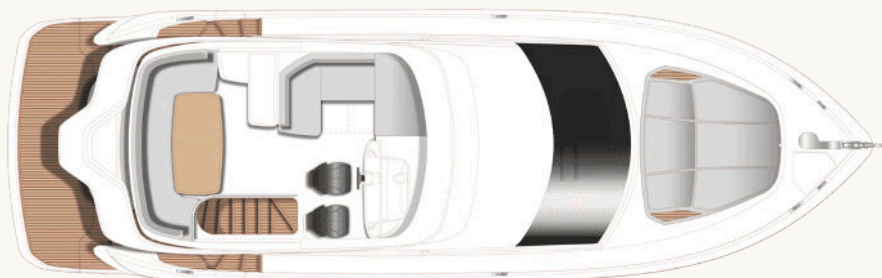


Take a virtual tour of the F45

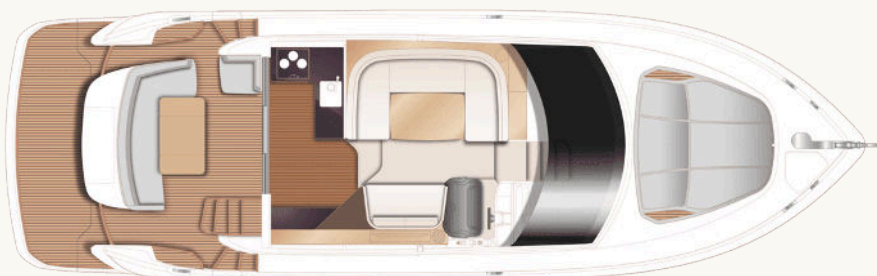


F45

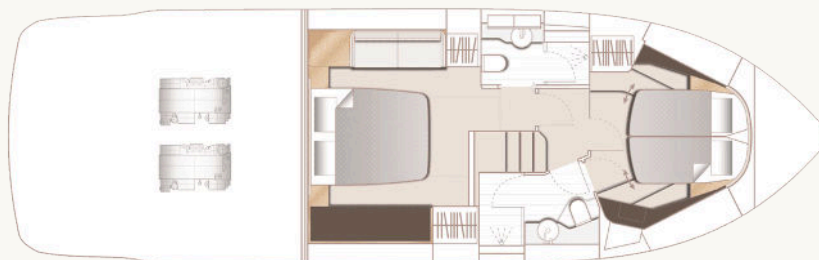
Layout and Specifications



F45 Flybridge



F45 Main Deck



F45 Lower Deck

Principal Dimensions

Length overall (incl. pulpit)	47 ft 1 in / 14.35m
Length overall (excl. pulpit)	44 ft 9 in / 13.64m
Beam	14 ft 0 in / 4.26m
Draft	3 ft 7 in / 1.10m
Displacement approx.	17,283 kg / 38,103 lbs*
Fuel capacity	361 gal / 433 US gal / 1,640 l
Water capacity (excl. calorifier)	102 gal / 122 US gal / 462 l
Black water tank	33 gal / 40 US gal / 150 l

Engines - Diesel

Twin Volvo D6-480 IPS 650 (2 x 480mhp)	Maximum speed range - 29-31 knots [†]
--	--

Full Specification

Deck fittings

- 6mm teak-laid transom platform, cockpit deck, flybridge stairway and steps to side decks
- Lewmar reversible electric anchor winch with foredeck, main helm and flybridge controls
- Stem head roller with automatic anchor launch and retrieve
- Self-stowing 20kg/35lbs Delta anchor with 40m of chain
- Deck hatch access to chain locker
- Fender storage
- Stainless steel bow fairleads
- Stainless steel bow, stern and spring cleats
- Stainless steel pulpit and guard rails
- Stainless steel coach roof and flybridge handrails
- Foredeck escape hatch
- Foredeck sunbathing area
- PVC rubbing band with stainless steel insert
- LED deck level lighting
- Illuminated crown logo on transom
- Full set of IMCO navigation lights
- Riding light

- Searchlight with dual station remote controls
- Twin electric horns
- Fuel and water fillers
- Holding tank dockside discharge connection
- Ensign socket and staff

Cockpit and bathing platform

- Self-draining
- L- shaped upholstered seating
- Teak folding table
- Upholstered aft facing seat with locker containing remote fuel cocks, manual bilge pump with valve chest and manual controls for automatic fire extinguisher
- Transom seat locker
- LED overhead and deck level lighting
- Stainless steel handrails
- Lockable gas strut assisted hatch to engine room/lazarette
- Life raft stowage locker
- Open rope storage lockers
- Integral stairway to flybridge with teak step

treads

- Transom gates leading to bathing platform
- Transom bathing platform with foldaway swimming ladder (will fit a tender up to 2.9m)
- Optional electro-hydraulic raise/lower mechanism for transom platform (400kg SWL - maximum advised tender weight 300kg) including dinghy chock system
- 220/240v shore support inlet
- Hot and cold transom shower
- Cockpit canvas cover

Flybridge

- Dual station instruments and controls (Helm Position)
- Adjustable steering wheel
- Audible and visual alarm for bilge pumps
- Twin helm seats with fore and aft adjustment for helmsman
- Large U-shaped upholstered seating
- Forward L-shaped seat (converts to sunpad)
- Folding teak table

- JL Audio M6-650X-L Waterproof speakers (2) linked to saloon audio system
- Clear view hatch to aft cockpit
- Wind deflector screens
- Stainless steel handrails
- LED deck level lighting
- Wireless waterproof phone charger
- GRP radar arch
- Console and seat covers
- Twin matching whip aerials for VHF R/T and radio
- Optional wet bar with electric barbecue with refrigerated top loading cool box
- Optional bimini

Helm position

- Double leather upholstered helm seat with manual fore and aft adjustment
- Dual station instruments and controls at Flybridge and Lower Helm Positions:
 - power steering
 - adjustable steering wheel
 - high-speed magnetic compass
 - electronic engine controls with integrated automatic trim tab control

- Joystick control
- electric anchor winch remote control
- 16" Volvo/Garmin display with audible and visual engine data and warning, autopilot control, speed and distance log, echo sounder, auto trim tab position and rudder reference
- VHF with DSC R/T with intercom
- remote control searchlight
- horn button
- Drinks holders
- Toughened glass screen (clear for night vision)
- Windscreen wipers with freshwater windscreen wash
- Exterior black mesh windscreen covers
- Bilge pump controls with visual pump running warnings (with audible alarm at upper helm)
- 24v and 240v electrical control panel
- Riding light, helm and navigation light control switches
- USB charging point (1)
- LED overhead lighting (24v) and night lighting
- Manual sliding tinted side window adjacent to helmsman
- Fitted carpet

Saloon

- Triple stainless steel framed sliding doors to aft cockpit (3 panes total, 2 opening)
- U-shaped sofa with dining table to port (option for double berth conversion)
- Two-seater sofa
- Drawer storage below sofas
- Fusion MS-RA770 audio system connected to speakers (2)
- Venetian blinds to all windows and doors
- LED overhead lighting (24v)
- Stairway to lower accommodation
- Fitted carpet

Galley

- Sylmar White (satin finish) solid surface counter top
- 3-zone diesel fuelled hob (option of electric hob and fitted as standard when generator selected)
- Extractor fan
- Combination microwave/convection oven with grill
- Stainless steel sink with mixer tap
- Twin refrigerator with removable freezer compartments
- Waste bin

- Chopping board
- Drawers and storage cupboards
- Manual tension venetian blinds to window
- LED overhead and task lighting (24v)
- 220/240v outlets
- Provision for optional dishwasher
- Timber flooring (V groove planked)

Accommodation

- All cabins and bathrooms feature opening portholes
- All cabins feature 220/240v power points
- All bathrooms feature electric freshwater toilets and 240v shaver points

Owner's stateroom

- Large double bed with drawers below
- Bedside tables
- Wardrobes with shelves
- Mirror
- Sofa
- Storage lockers and drawers
- Panoramic windows including opening portholes
- Manual tension venetian blinds to hull windows

- LED overhead (24v)
- Individual berth lights
- 220/240v outlets (2)
- USB charging point (1)
- Fitted carpet

En-suite bathroom

- Wash basin with Carrera White (gloss finish) solid surface counter top
- Mirror
- Storage lockers
- Shower compartment with automatic pump out
- Extractor fan
- Opening porthole Manual tension venetian blind
- LED overhead lighting (24v)
- Bathroom accessories
- Koko White (satin finish) solid surface flooring

Forward guest cabin

- Large double bed with drawers below (option of scissor berths)
- Wardrobe with shelves
- Dressing table
- Mirror

- Storage lockers and drawers
- Opening porthole
- Manual tension venetian blind
- Deck hatch
- LED overhead (24v)
- Individual berth lights
- 220/240v outlets (2)
- USB charging point (1)
- Fitted carpet

En-suite bathroom

- Wash basin with Carrera White (gloss finish) solid surface counter top
- Mirror
- Storage lockers
- Shower compartment with automatic pump out
- Extractor fan
- Opening porthole and venetian blind
- LED overhead lighting (24v)
- Bathroom accessories
- Koko White (satin finish) solid surface flooring
- Day access door from passageway

Power and drive systems

- Twin Volvo IPS (2 x 440 or 480mhp driving contra rotating propellers via pod drive) with integral power-assisted steering system with automatic trim tabs
- Engine room lighting
- Engine room access hatch and ladder
- Electronic engine controls
- Joystick manoeuvring system
- Volvo IPS active corrosion protection system for pod drive
- Engine room extractor fan with electronic time delay

Electrical systems

24 Volt:

- 4 x heavy-duty batteries for engine starting
- 4 x heavy-duty auxiliary batteries
- Battery link facility with remote control at helm position
- All battery banks are charged using a voltage sensitive relay that parallels all batteries banks when a charging source is present
- 40-amp 24v battery charger
- Remote battery master switches with control

switch at main switch panel

- Circuit breakers on all circuits
- 24v to 12v voltage dropper for certain navigation and radio circuits
- Princess Connect telemetry and maintenance system

220/240 Volt:

- Shore support inlet
- Polarity check system
- Earth leakage safety trip
- Circuit breakers on all circuits
- Power points (240v) in: owner's stateroom, guest cabin, galley and saloon area
- Shaver points in all bathrooms

Fuel system

- Twin fuel tanks (in NS8 marine grade alloy) with interconnection system giving 286 gal /343 US gal / 1,300 l capacity
- Fuel fillers on port and starboard side decks
- High-capacity fuel filter with water trap and change-over valves, water contamination warning integrated with engine data display

- Remote fuel cocks in cockpit seat locker
- Fuel levels integrated with engine display data

Water system

- Water tank of 100 gal /120 US gal / 455l plus 7 gal /8 US gal / 32 l hot water calorifier giving a total of 107 gal / 129 US gal / 487l water capacity.
- Water heated by engines and 240v immersion heater
- Automatic water pump with filter
- Main circuit breaker at switch panel
- Water level gauge
- Deck filler
- Electric freshwater toilet system with 33 gal / 40 US gal / 150l holding tank, contents gauge, manual overboard discharge and dockside discharge.

Fire extinguishers

- Automatic/manual override fire extinguishers in engine room with warning system at flybridge and lower helm position
- Hand operated fire extinguishers (4) in owner's

stateroom and forward guest cabin, galley and lower helm position

Bilge pumps

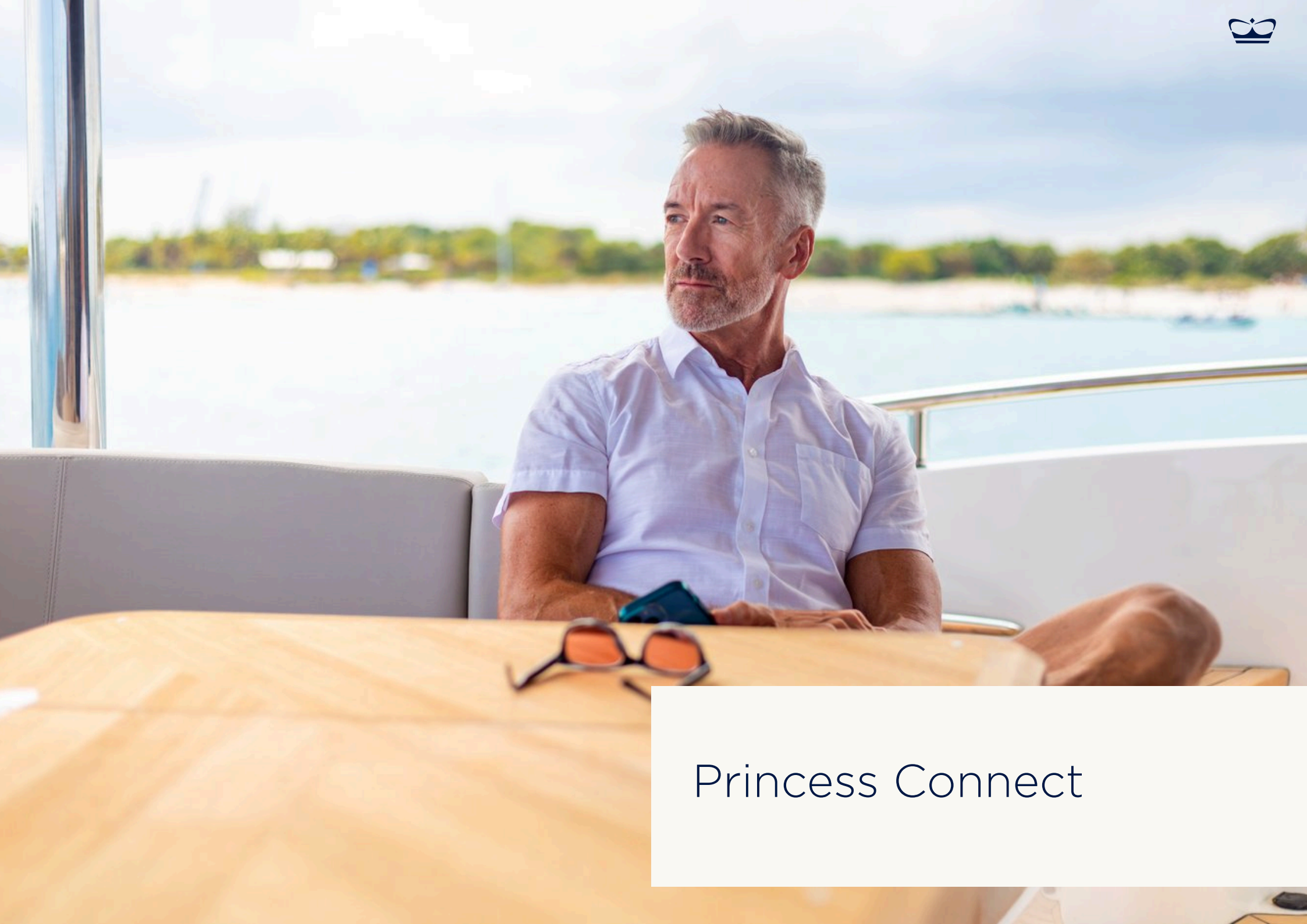
- Automatic electric bilge pumps (with manual override) in engine room (2) and forward accommodation (2)
- High-capacity manual bilge pump with valve system and suction points in same areas
- Electric bilge pumps have controls and warning lights at main helm and warning light with audible alarm at flybridge helm

Other standard equipment

- Ensign staff
- Fenders (4)
- Mooring warps (4)
- First aid kit
- Tool kit
- Owner's manual and engine manual
- Quilted mattress cover supplied to all cabins
- Ship's document case
- Boat hook
- Anchor winch back up handle

Finishes

- Teak-laid decks to transom platform, steps to side decks and steps to flybridge
- Timber-laid V groove planked floor to galley
- Furniture in Rovere oak with satin finish as standard. Optional finishes include ash or silver oak with a satin finish or walnut wood in a satin or gloss finish
- Solid surface floors in all bathroom suites
- Solid surface wash basin counter tops in all bathroom suites
- Galley counter top in solid surface
- Galley furniture in soft-touch grey surface matt finish
- Choice of high-quality carpet and fabrics from the Quartz range
- Blinds or sunscreens to all windows and portholes



Princess Connect

For your peace of mind, we provide a telemetry and transparent maintenance system as standard on all our new yachts.

Princess Connect is designed to keep you and your yacht in continuous communication, providing remote monitoring anywhere in the world.

In addition to enhanced control onboard, Princess Connect acts as your virtual service operator, providing personalised notifications on upcoming maintenance requirements, a digital library of user guides and manuals, and further support information.





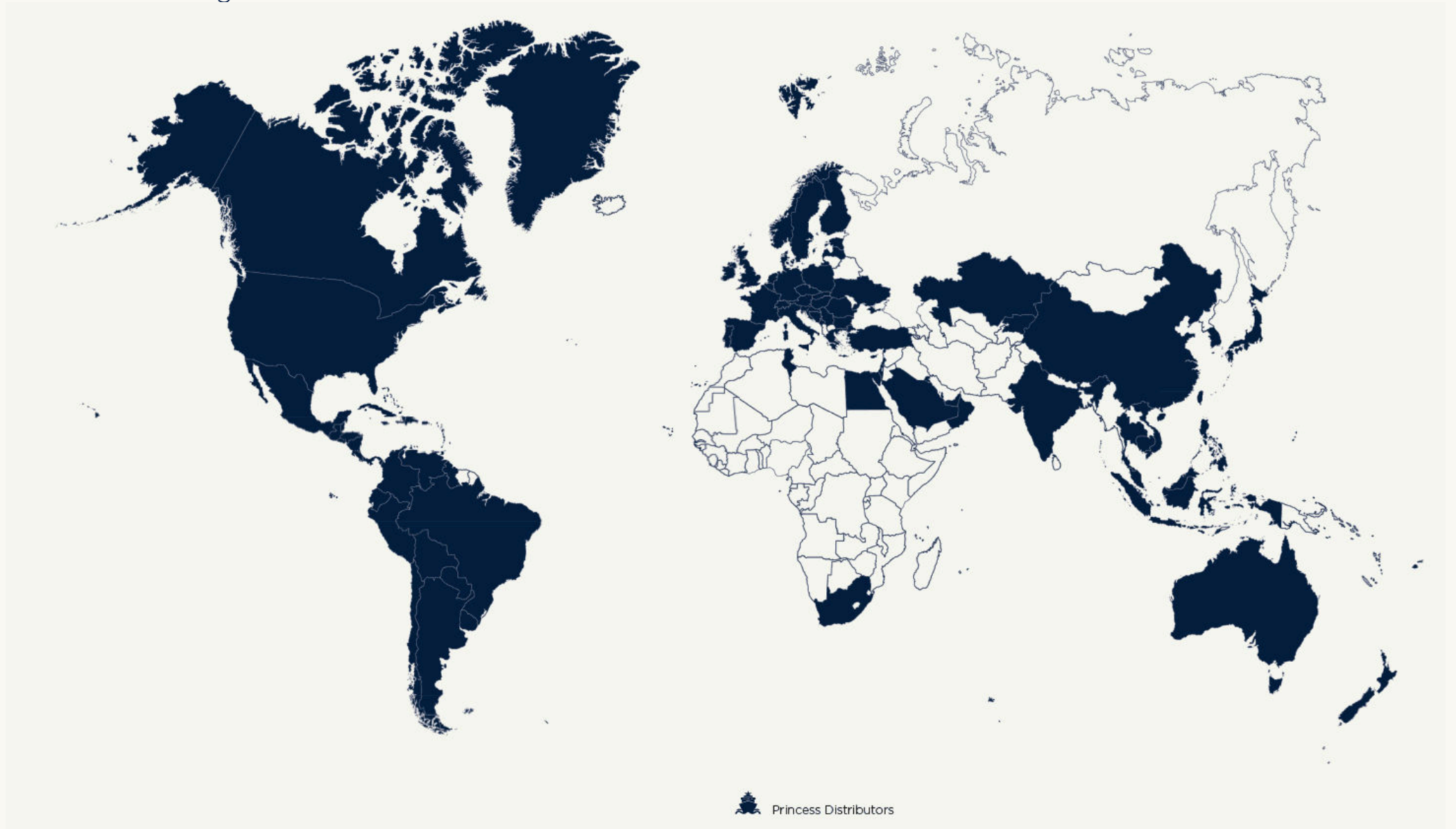
Distributor Information



With an extensive network of distributors around the globe, we are able to bring you personalised world-class service almost anywhere. We do all that we can to make sure that the process of buying a Princess is yet another exciting aspect of ownership.

Our specialist dealers have years of experience and unparalleled knowledge of our yachts. For more information on any one of the yachts in our range, please contact your local Princess office. Address and contact details can be found on our [website](#).

Global Coverage





Disclaimer

* Displacements are calculated with 50% fuel and water with liferaft but with no optional equipment fitted or other gear.

† Maximum speeds will vary depending on cleanliness of hull, condition of sterngear, loading of craft, water and air temperatures, sea conditions and other factors. Speed estimates are therefore given in good faith but without warranty or liability on the part of Princess Yachts Limited. Craft illustrated in this brochure may be fitted with certain optional equipment. Specifications may be changed at any time without notice or liability.

‡ Certain specifications, which vary by model, are upgraded on Princess Yachts built for use in North America. Thus, specifications and equipment will vary from the information listed in the brochure for North American Princess Yachts (e.g. air conditioning and an upgraded generator will be included as standard for all North American models and electric cooking facilities will be supplied in place of gas systems). Please contact Princess Yachts America for full details regarding the North American specifications for individual models.



Thank you

For more information or to find a distributor,
please visit our website.